

FAN SCHEDULE

SYMBOL	EF-1, EF-2	EF-3
MANUFACTURER	GREENHECK	GREENHECK
MODEL NUMBER	GB-121-4	GB-070-4
AIRFLOW (C.F.M.)	1,000	200
STATIC PRESSURE (IN.)	0.250	0.250
SONES (MAX.)	7.3	6.3
MOTOR HORSEPOWER	1/4	1/4
FAN R.P.M.	1052	1247
VOLTAGE	277-1-60	277-1-60
DRIVE TYPE	BELT	BELT
ROOF/WALL OPENING SIZE (IN.)	14.5"x14.5"	12.5"x12.5"
DISCHARGE CAP NUMBER		
OPERATION	EXHAUST	EXHAUST
DAMPER SIZE (IN)	12"x12"	10"x10"
WEIGHT (EXCLUDING CURB) (LBS.)	66	43

REMARKS:
PROVIDE WITH ROOF CURB AND WIRE TO EMS.

ELECTRIC HEATER SCHEDULE

SYMBOL	EH-1
MANUFACTURER	MARKEL
MODEL NUMBER	G3452
K.W. TOTAL	2.0
CONTROL STEPS	---
B.T.U.H.	6,826
AIR RISE (°F)	27
VOLTAGE	277-1-60
MOUNTING TYPE	SURFACE

REMARKS:
PROVIDE WITH BUILT-IN T'STAT AND CIRCUIT BREAKER..

AIR DISTRIBUTION SCHEDULE

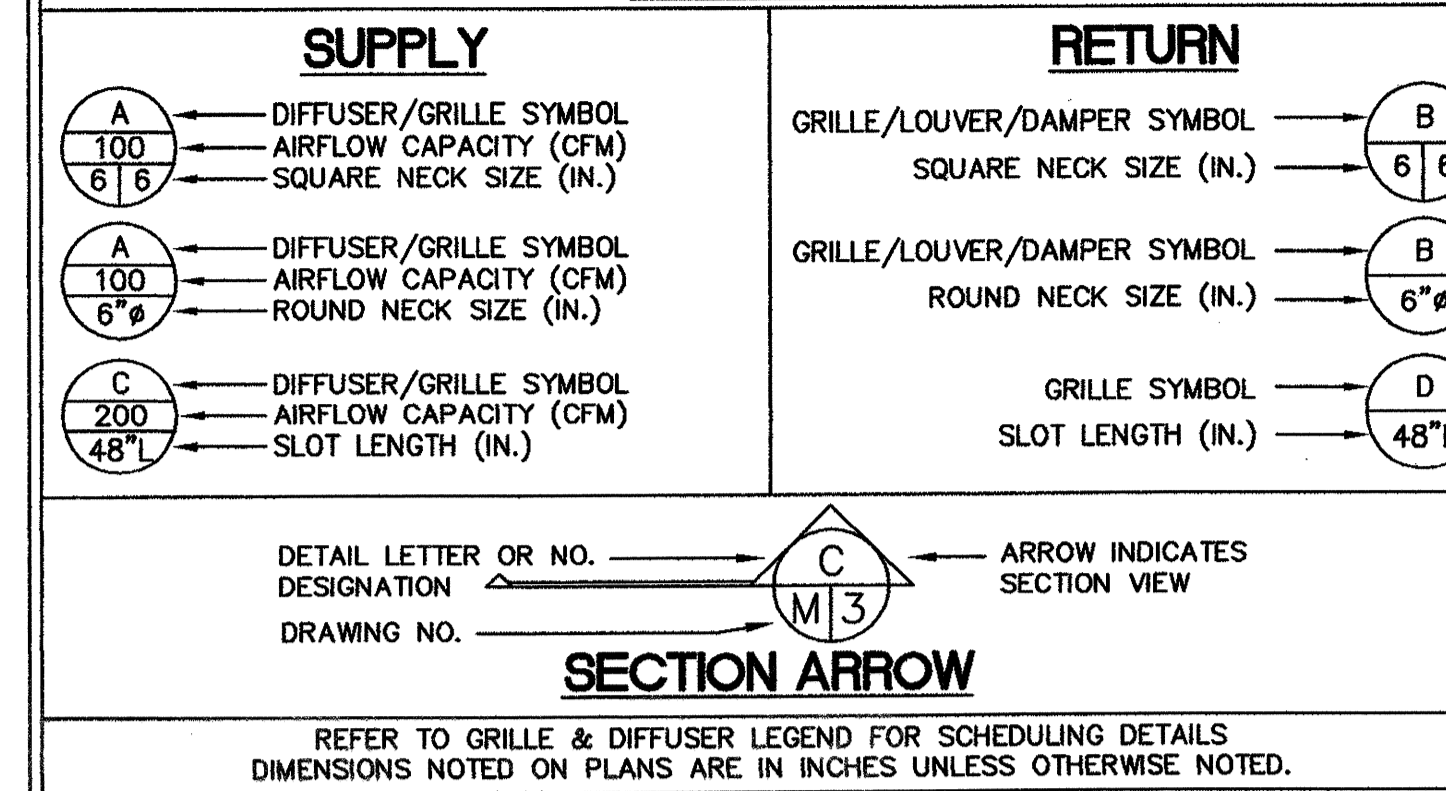
SYMBOL	TYPE	MANUFACTURER	MODEL NUMBER	FINISH	DAMPER	REMARKS
A	SURFACE MTD. DIFFUSER	METALAIRE	7000-1	OFF-WHITE	W/OBD	
B	SURFACE MTD. RETURN	METALAIRE	7000R-1	OFF-WHITE	---	
C	SIDEWALL RETURN	METALAIRE	RH	ALUMINUM	---	COLOR PER ARCHITECT
D	SIDEWALL DIFFUSER	METALAIRE	H4004D	ALUMINUM	W/OBD	COLOR PER ARCHITECT
E	SURFACE MTD. DIFFUSER	METALAIRE	5500-15	OFF-WHITE	W/OBD	
F	LINEAR SLOT DIFFUSER	METALAIRE	FAL-15-CC-COMBO	BLACK INTERIOR	---	PROVIDE W/FAP1-10 & DAMPER
DFD	OVAL FIRE DAMPER	RUSKIN	DIBD2 "STYLE B"	MILL		
FD	FIRE DAMPER	RUSKIN	IBD2 "STYLE B"	MILL		
RFD	ROUND FIRE DAMPER	RUSKIN	IBD2 "STYLE CR"	MILL		
TFD	THINLINE FIRE DAMPER	RUSKIN	IBDT	MILL		
DAE	DUCT AIR EXTRACTOR	METALAIRE	AIRTROL102	MILL		
—	ROUND MANUAL DAMPER	RUSKIN	MDRS25	MILL		
—	MANUAL DAMPER	RUSKIN	MD-35	MILL		
—M	MOTORIZED DAMPER	RUSKIN	CD-60	MILL		

REMARKS
ALTERNATE AIR DISTRIBUTION SUPPLIERS SHALL INSURE THAT "NC" AND PERFORMANCE DATA MATCHES SPECIFIED DEVICES.

NOTES:

- VAV BOXES BY CARRIER, OR APPROVED EQUAL.
- TIE VAV BOX CONTROLS INTO EMS.
- AIR DISTRIBUTION BY METALAIRE AS SPECIFIED. KRUGER AND J & J ARE EQUALS.
- DUCTWORK TO BE WRAPPED WITH 2" THICK DUCTWRAP. SEAL WITH GLASS FABRIC AND MASTIC. DUCT TAPE NOT ALLOWED.
- ALL DUCTWORK TO BE GALVANIZED SHEET METAL CONSTRUCTED PER LATEST S.M.A.C.N.A. STANDARDS.
- MAXIMUM FLEX DUCT RUNS TO BE 10'-0".

LEGEND



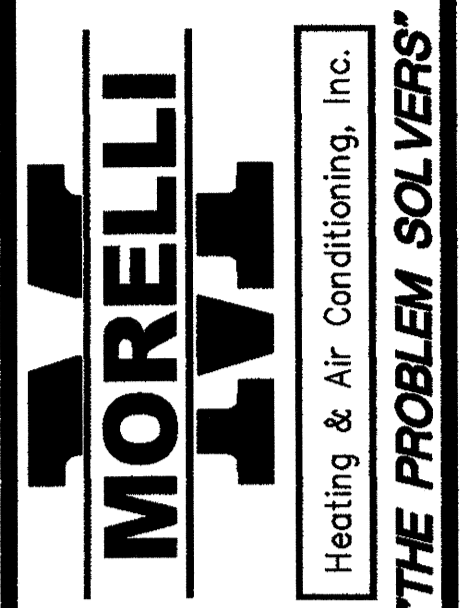
MECHANICAL SYMBOLS

	SUPPLY AIR DUCT SECTION		4-WAY CEILING DIFFUSER
	RETURN AIR DUCT SECTION		CEILING RETURN/EXHAUST GRILLE
	THERMOSTAT		SIDE WALL DIFFUSER
	SWITCH		SIDE WALL RETURN
	UNDERCUT DOOR		AD ACCESS DOOR
	SPLITTER DAMPER		FD FIRE DAMPER
	TURNING VANES		FC FLEXIBLE CONNECTION
	MANUAL DAMPER		DAE DUCT AIR EXTRACTOR
	MOTORIZED DAMPER		OA OUTSIDE AIRFLOW
	SMOKE DETECTOR		SD SMOKE DAMPER
	CONDENSATE PIPING		C.O. CASED OPENING
			AFF ABOVE FINISHED FLOOR
			BFC BELOW FINISHED CEILING

MECHANICAL NOTES

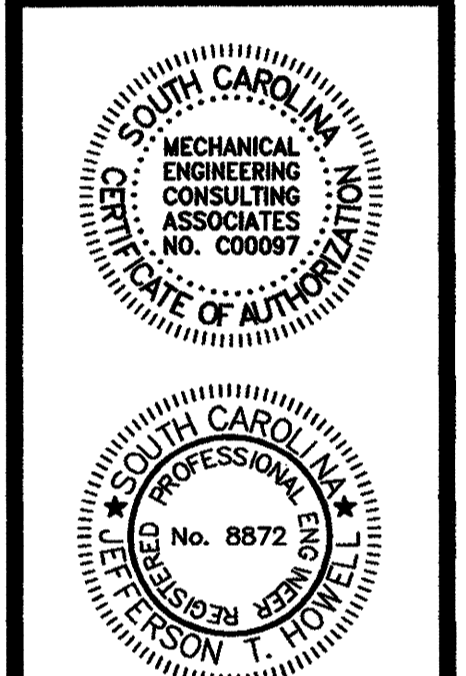
- DO NOT SCALE DRAWING. ROUGH FROM EQUIPMENT MANUFACTURER AND ARCHITECTURAL DRAWINGS.
- DIMENSIONS NOTED ON PLANS ARE IN INCHES UNLESS OTHERWISE NOTED.
- DUCT SIZES NOTED ON PLANS ARE INTERIOR DIMENSIONS.
- ROUTE CONDENSATE DRAIN LINES TO ROOF DRAINS, GUTTERS, FLOOR DRAINS, OR FRENCH DRAIN AS SHOWN ON DRAWINGS.
- MECHANICAL CONTRACTOR SHALL BE RESPONSIBLE FOR VERIFYING ALL EQUIPMENT VOLTAGES WITH THE ELECTRICAL CONTRACTOR PRIOR TO RELEASING EQUIPMENT FROM MANUFACTURER.
- SOME REFRIGERANT LINE LENGTHS AND/OR VERTICAL LIFTS MAY EXCEED MANUFACTURER'S RECOMMENDATIONS. MECHANICAL CONTRACTOR IS RESPONSIBLE FOR INSURING THE EQUIPMENT MANUFACTURER SIZES FOR ALL REFRIGERANT LINES FOR THESE PIECES OF EQUIPMENT.
- ROUND DUCTWORK SHOWN ON DRAWING IS DIAGRAMMATIC. ACTUAL RUN SHALL BE SHORTEST POSSIBLE WITHOUT SHARP BENDS. ROUND DUCTWORK SHALL BE GALVANIZED STEEL WITH 2" THICK FIBERGLASS DUCT WRAP INSULATION PER SPECIFICATIONS.
- FLEXIBLE DUCTWORK WILL BE ALLOWED AT THE END OF GALVANIZED STEEL RUN OUTS; MAXIMUM LENGTH OF FLEXIBLE DUCT SHALL NOT EXCEED 10'-0". REFER TO TYPICAL RUN OUT DETAIL.
- PROVIDE DUCT MOUNTED SMOKE DETECTORS FOR ALL AIR CONDITIONING UNITS PER NFPA, IBC, IMC, AND LOCAL CODES.
- PROVIDE PLASTIC NAMEPLATES FOR ALL EQUIPMENT SPECIFIED ON PROJECT. LABELING TAG SHALL BE SAME AS EQUIPMENT NUMBER.

REVISIONS		
No.	Date	Description
1	3/02/06	REV. FLEX DUCT L. TO 10'

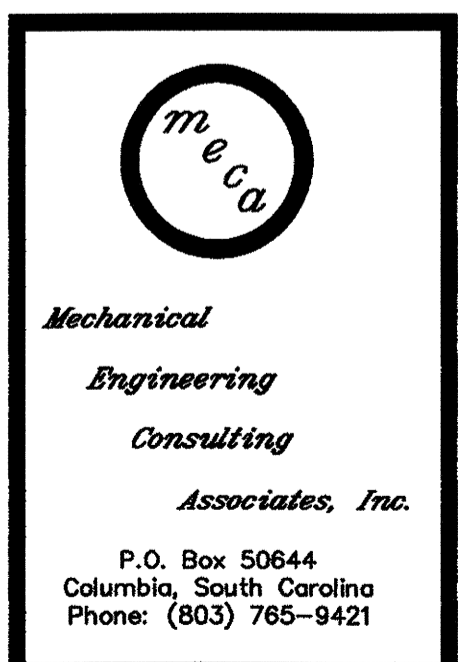


Job Number : 105261
Designed : 11/11/05
Plot Date : 03/02/06
Drawn : AKK
Approved By : JTH

THIS DRAWING IS THE PROPERTY OF MECHANICAL ENGINEERING CONSULTING ASSOCIATES, INC. UNAUTHORIZED USE OF ANY KIND, INCLUDING USE ON OTHER PROJECTS IS PROHIBITED.



Project OFFICES AT BELLE HALL
BUILDING TWO
MOUNT PLEASANT, SC
Sheet Title MECHANICAL SCHEDULES



Sheet No. **M201**
of 7
Project No. **105261**