

**STATISTICS**

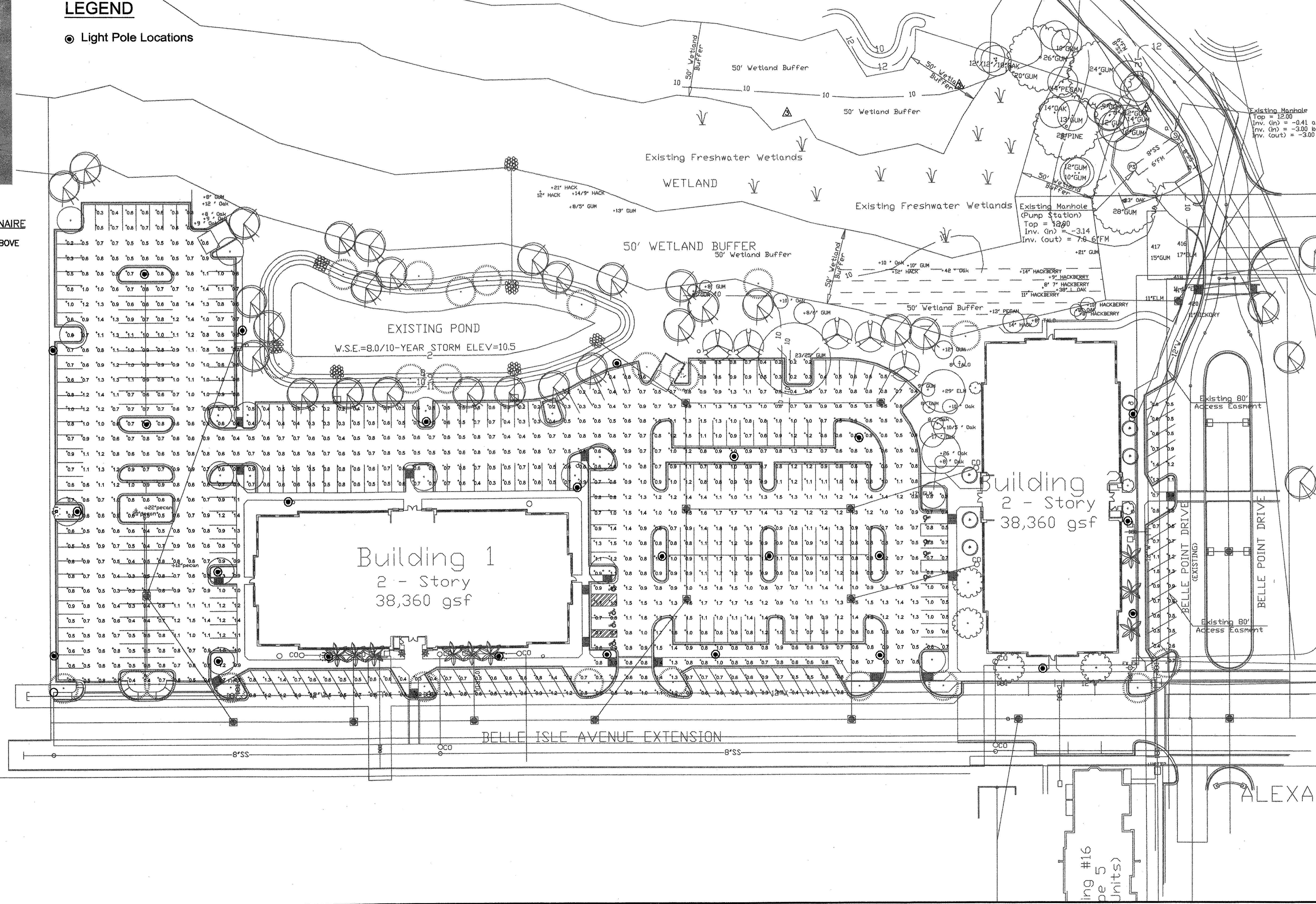
| Description  | Avg    | Max    | Min    | Max/Min | Avg/Min |
|--------------|--------|--------|--------|---------|---------|
| Calc Zone #1 | 0.8 fc | 1.8 fc | 0.2 fc | 9.0:1   | 4.1:1   |
| Calc Zone #2 | 0.7 fc | 1.5 fc | 0.4 fc | 3.8:1   | 1.9:1   |

**LEGEND**

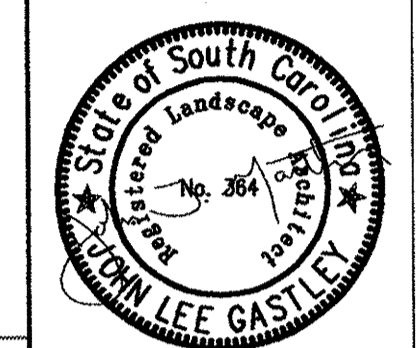
● Light Pole Locations

**HOLOPHANE  
UTILITY SERIES  
GRANVILLE FIXTURE LUMINAIRE**

NOTE: FIXTURE AS SHOWN ABOVE  
WITH FLUTED POLE



**SEAMON WHITESIDE  
& ASSOCIATES, INC**  
 503 WANDO PARK BLVD. 209 E WASHINGTON ST.  
 SUITE 100 GREENVILLE, SC 29607-2835  
 MOUNT PLEASANT, SC 29607-2835  
 2946-7949  
 (843) 884-1667 phone (864) 298-0534 fax  
 (843) 884-6944 fax (864) 298-8018 fax  
 e-mail: swa@swasinc.com



**OFFICES at BELLE HALL**  
 Southeast Management and Leasing Corporation  
 Mount Pleasant, South Carolina

DRAWN BY: BAE  
 CHECKED BY:

PLOT SCALE:  
 1" = 1'  
 SERVER FILENAME:  
 3552\DWG\3552PPA-PS-REV.DWG

PROJECT: 3552.00  
 DATE: 10 January 01

| NO. | DATE     | REVISION NOTES                               | BY  |
|-----|----------|--|-----|
| 1   | 07/17/06 | FINAL DRG SUBMITTAL                          | BAE |
| 2   | 07/18/06 | FINAL SUBMITTAL TO TOWN                      | BAE |
| 3   | 07/19/06 | REVISED PER DRAINAGE AND PLANTING REVISIONS. | BAE |
| 4   |          |  |     |
| 5   |          |  |     |
| 6   |          |  |     |

Site Lighting