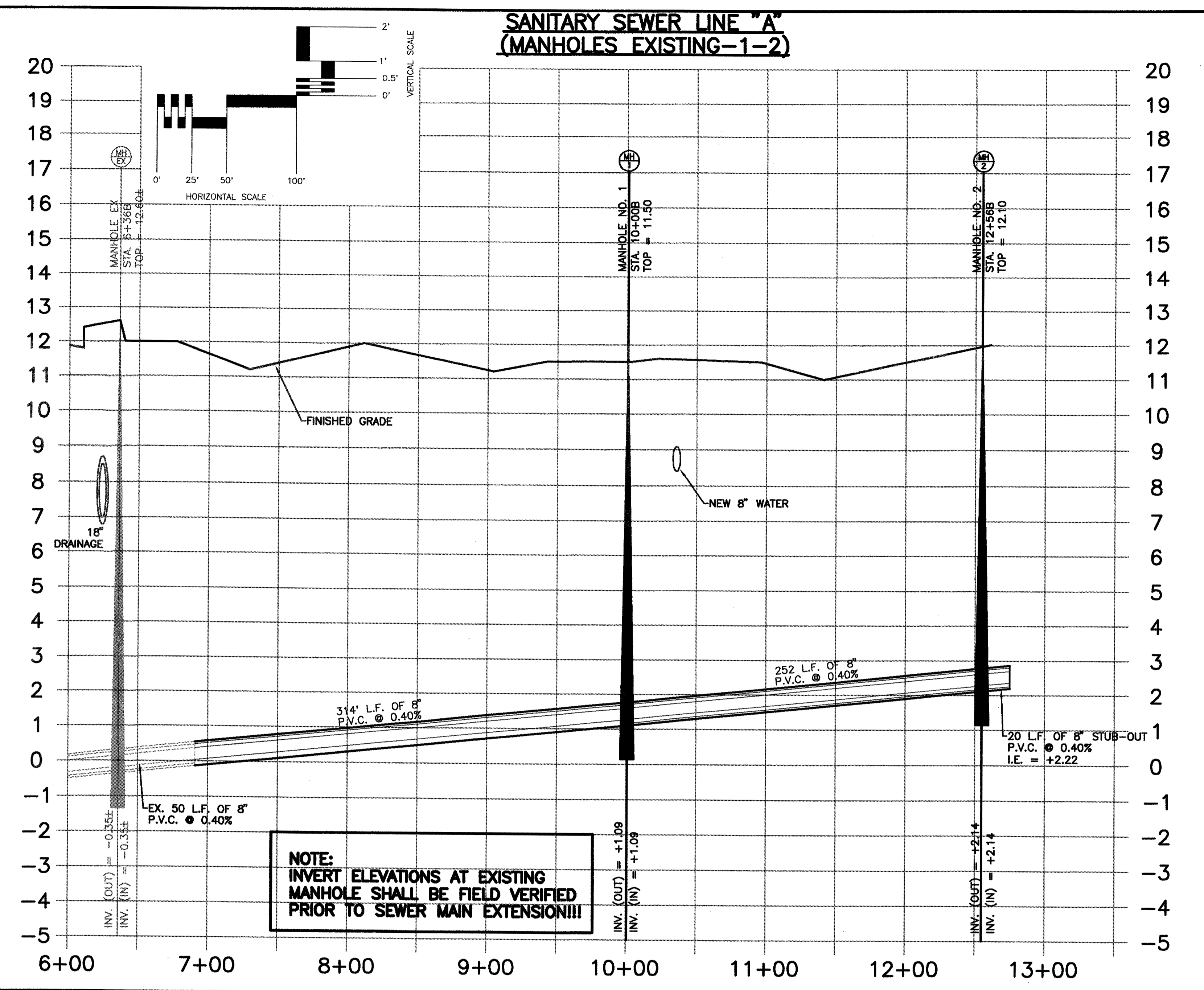
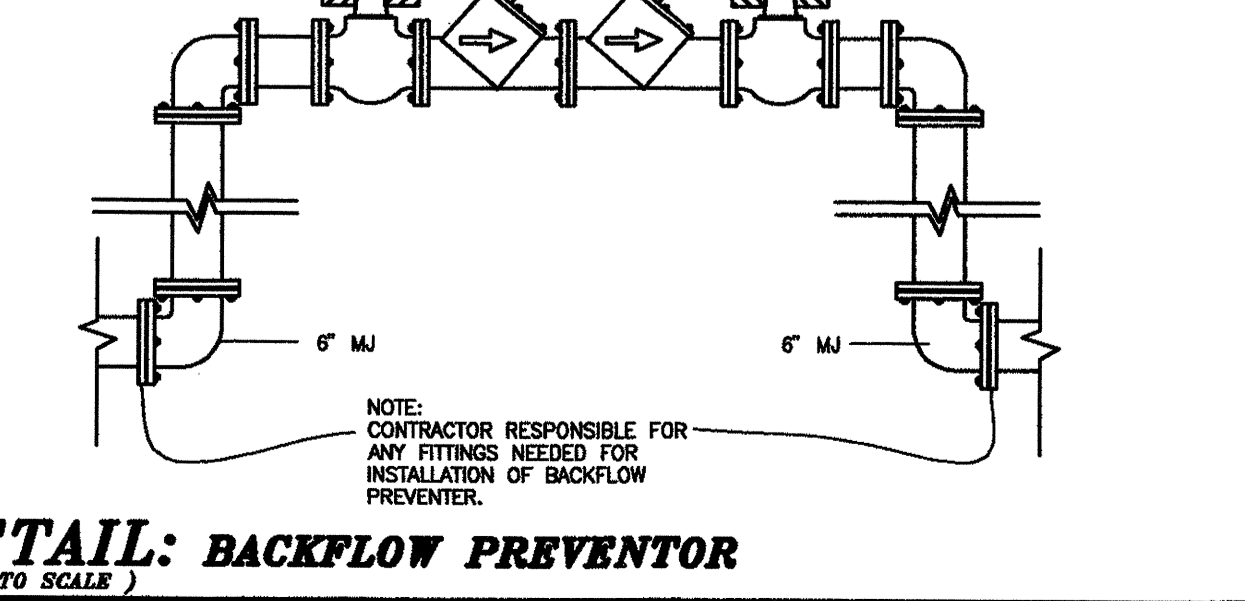
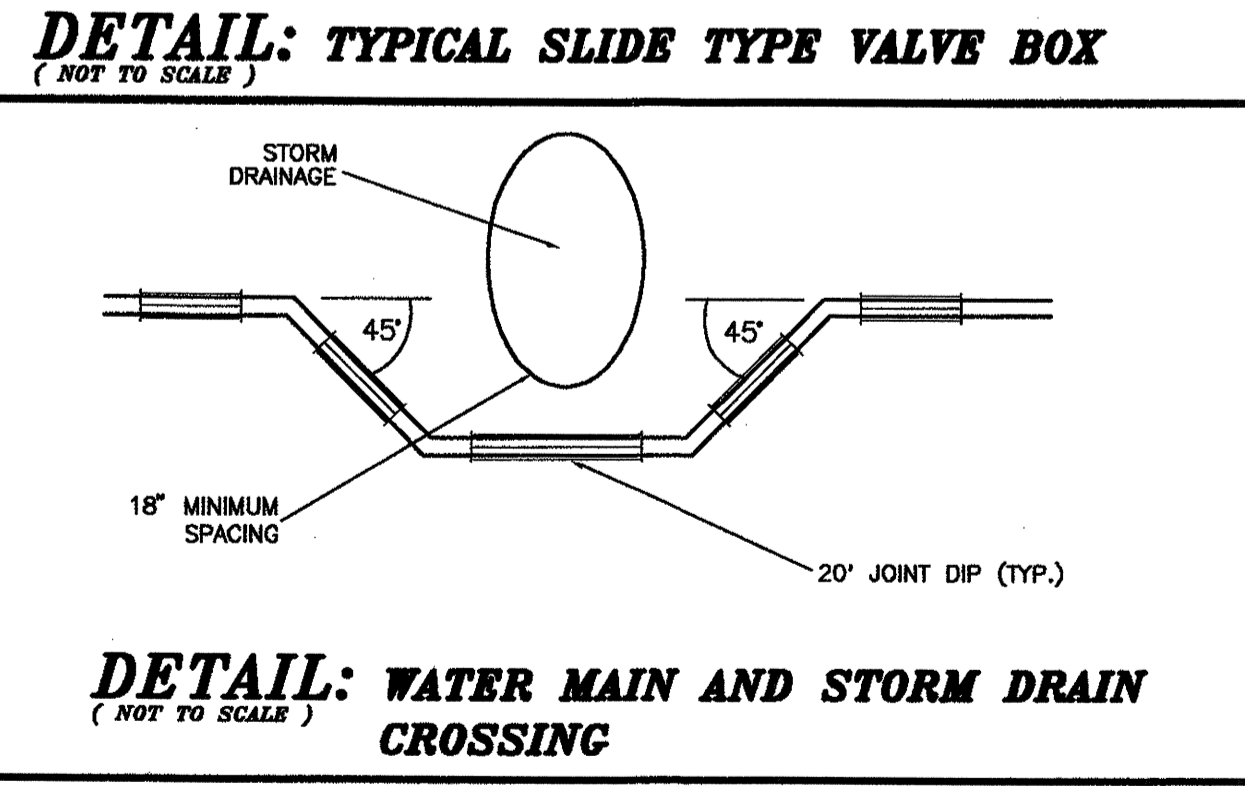
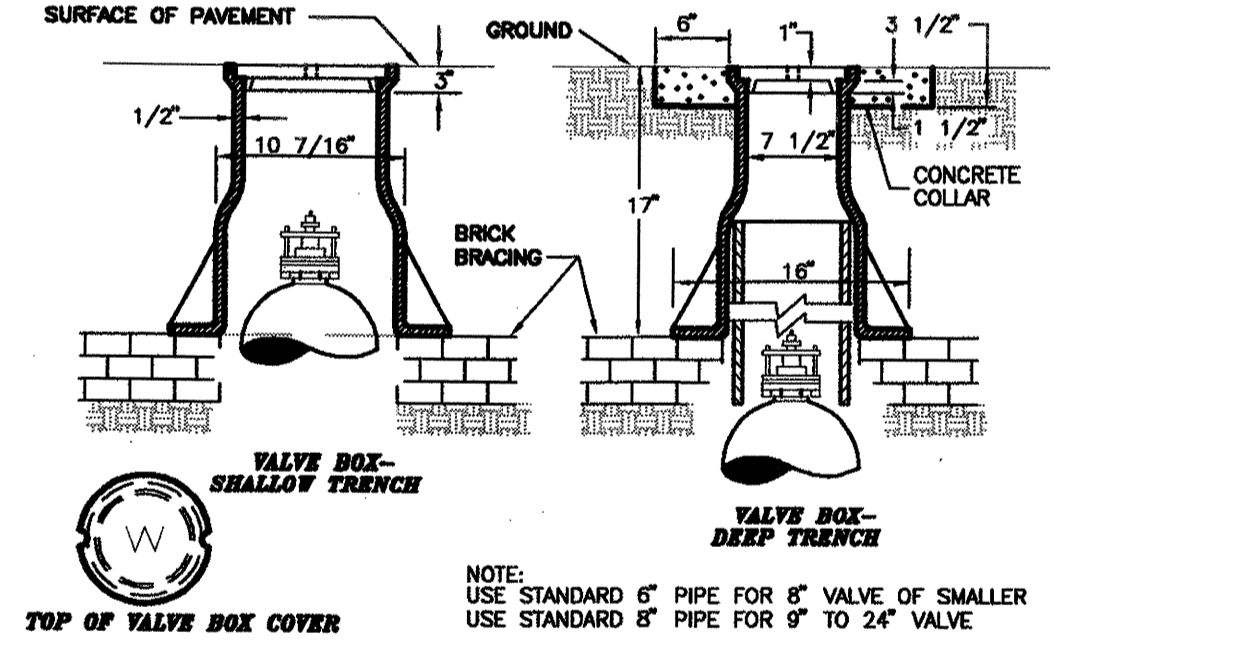
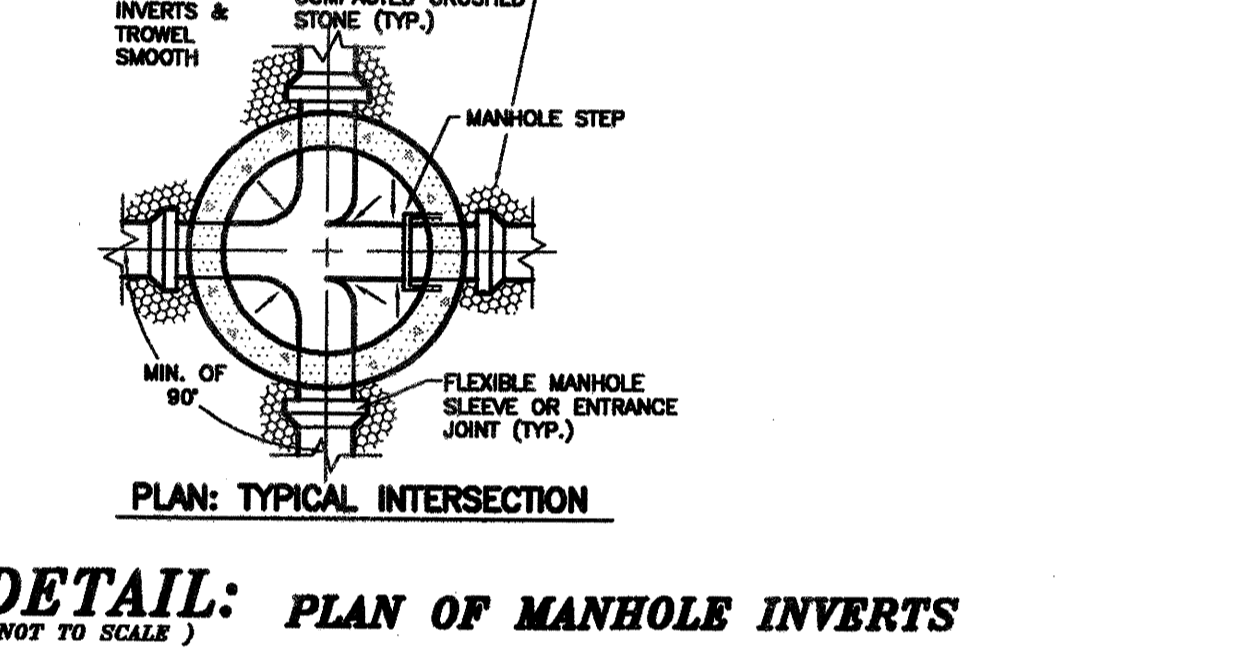
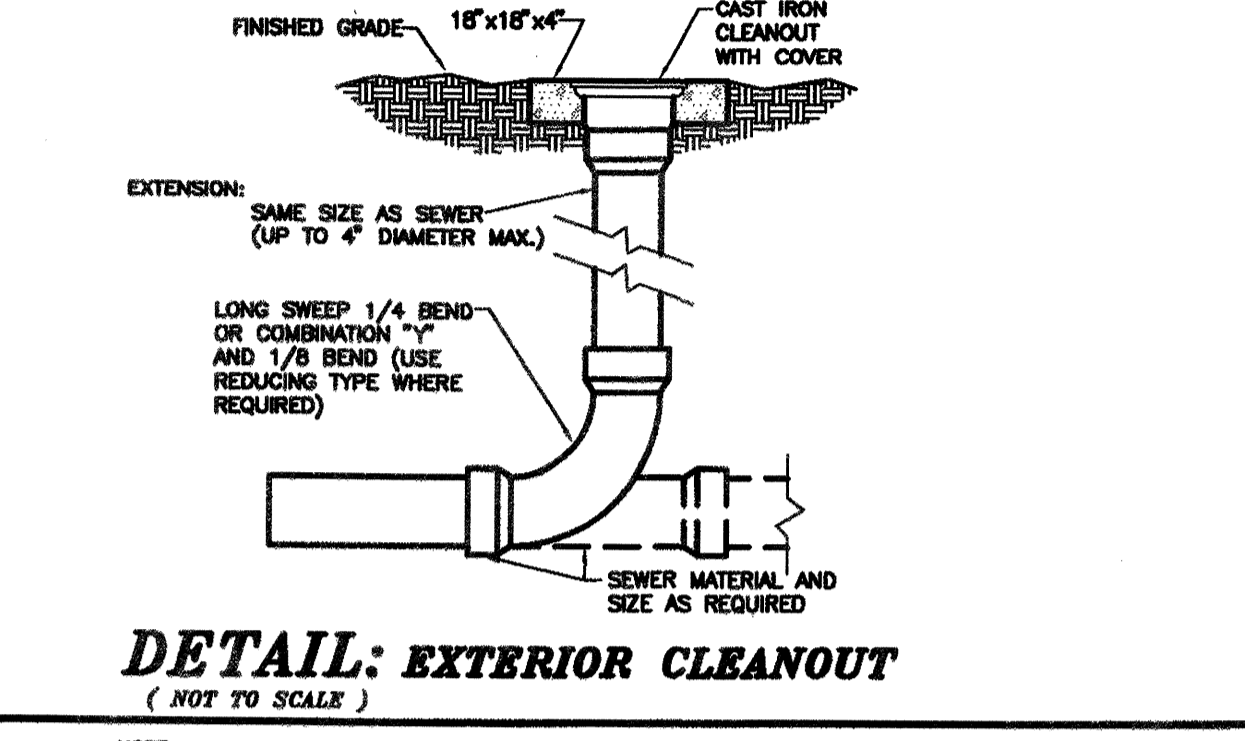
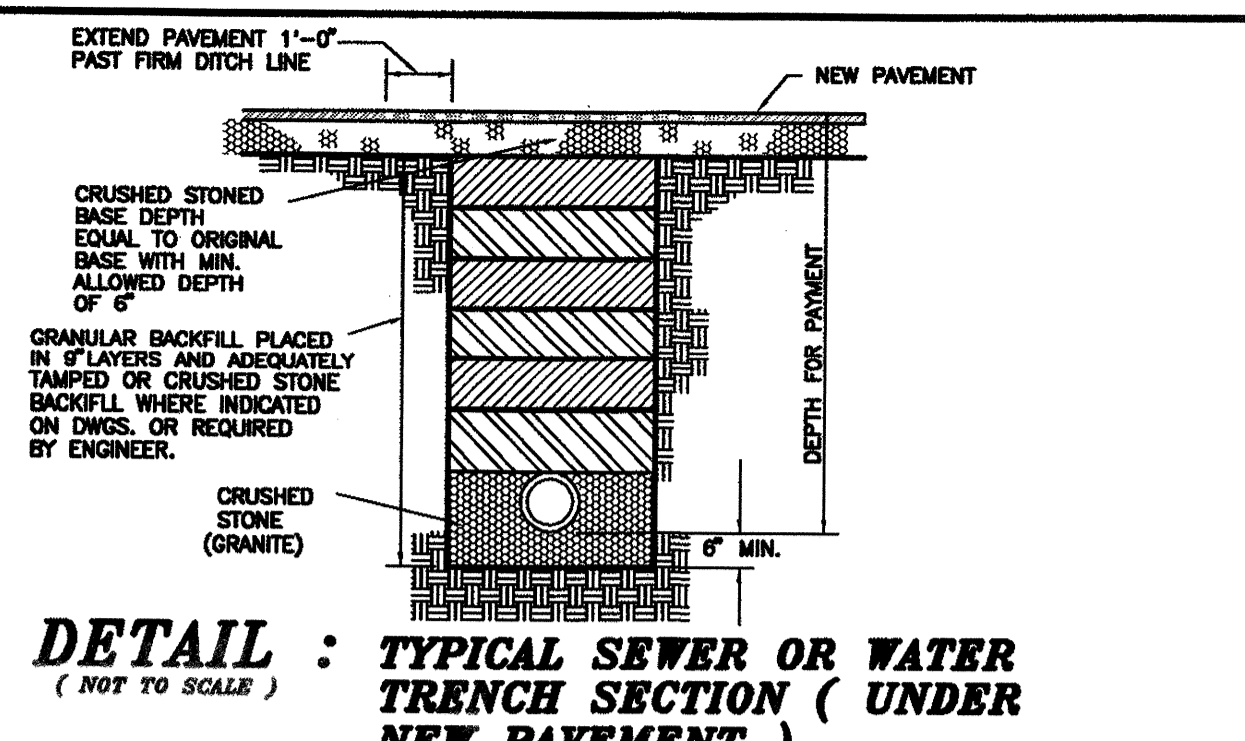
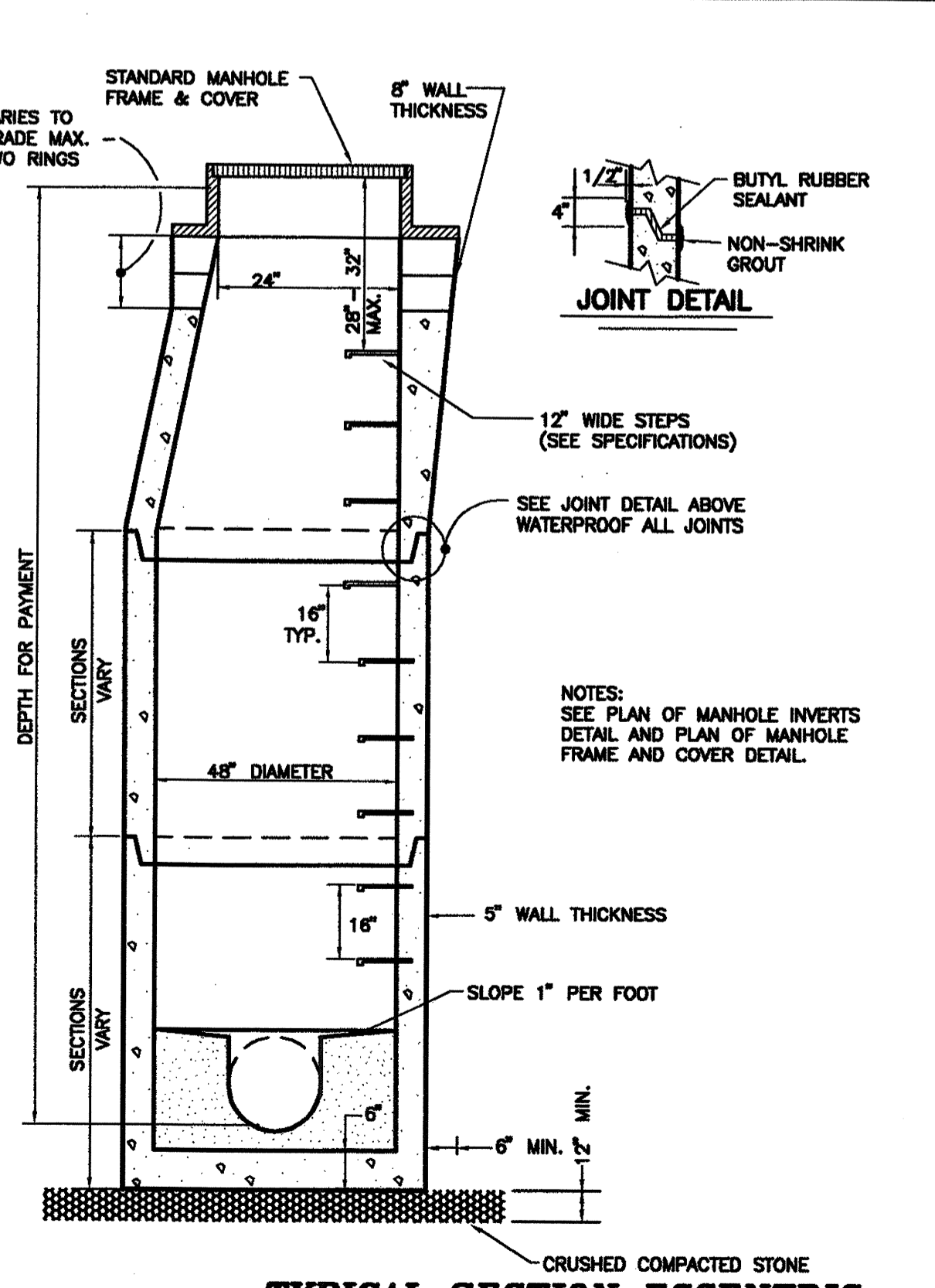
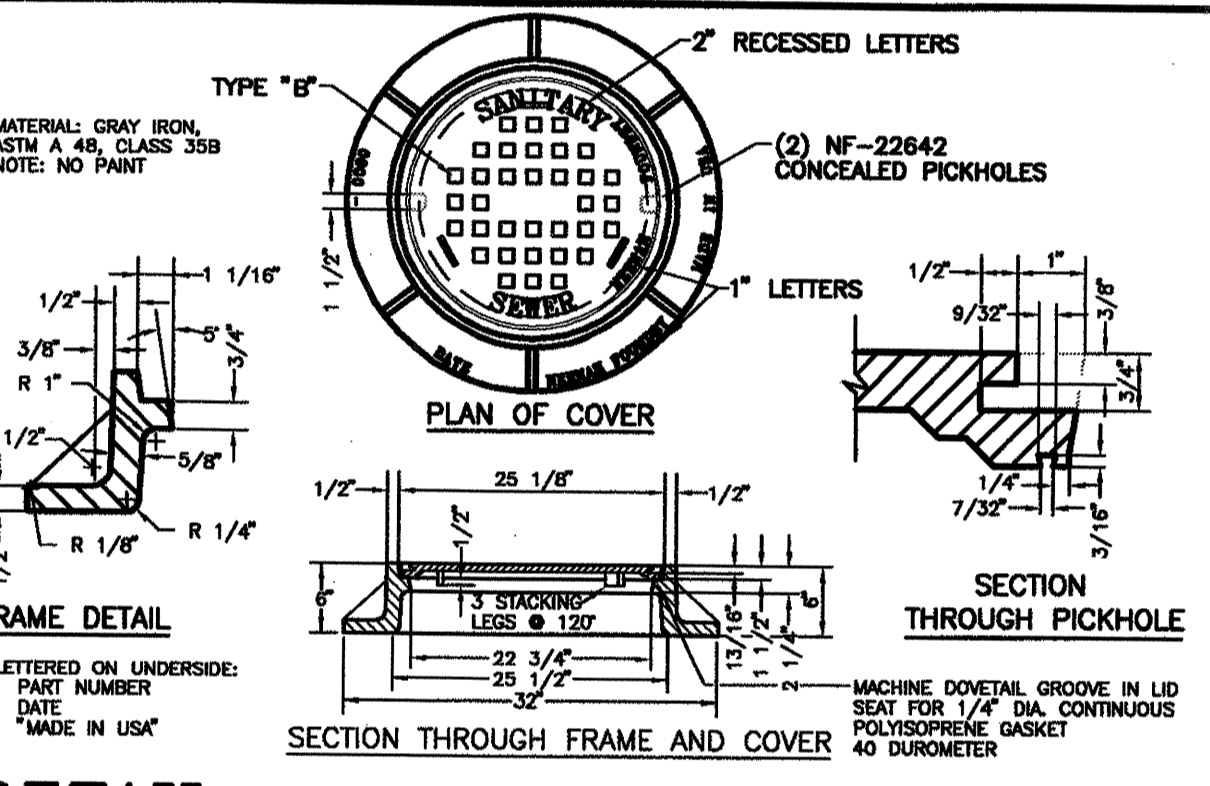
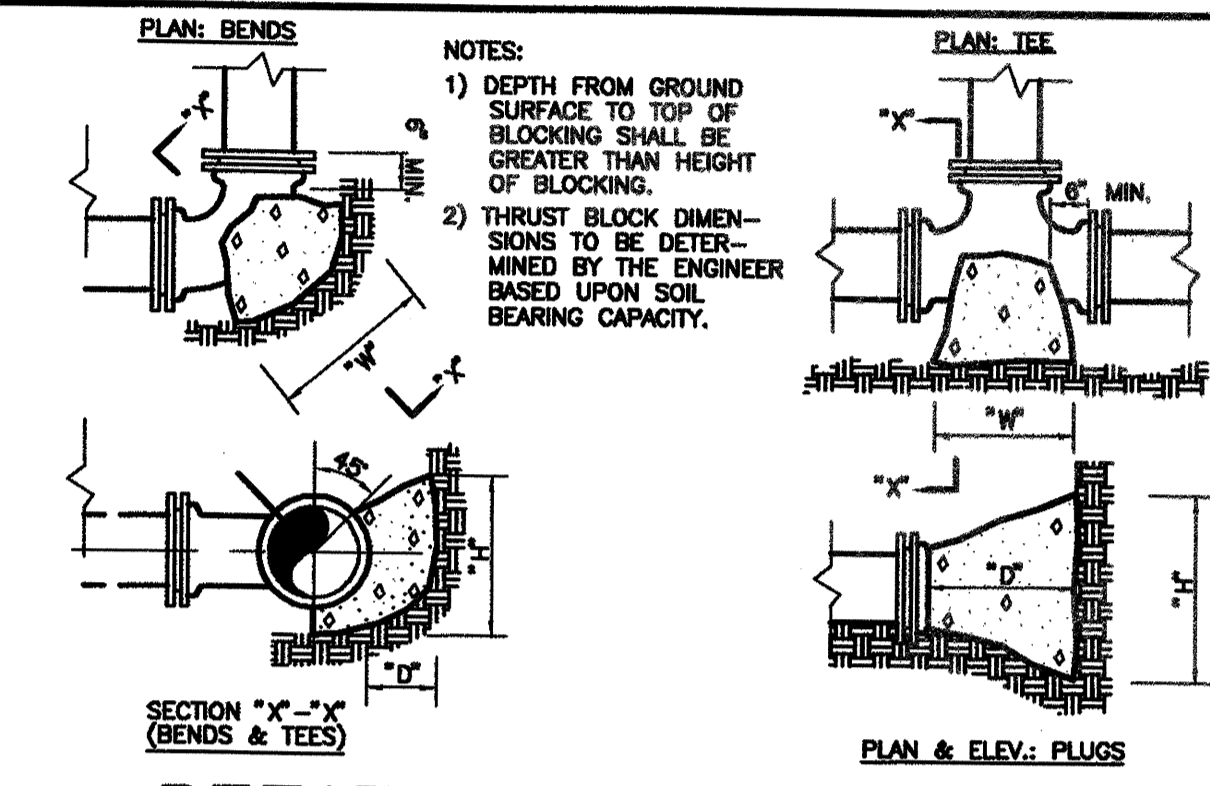
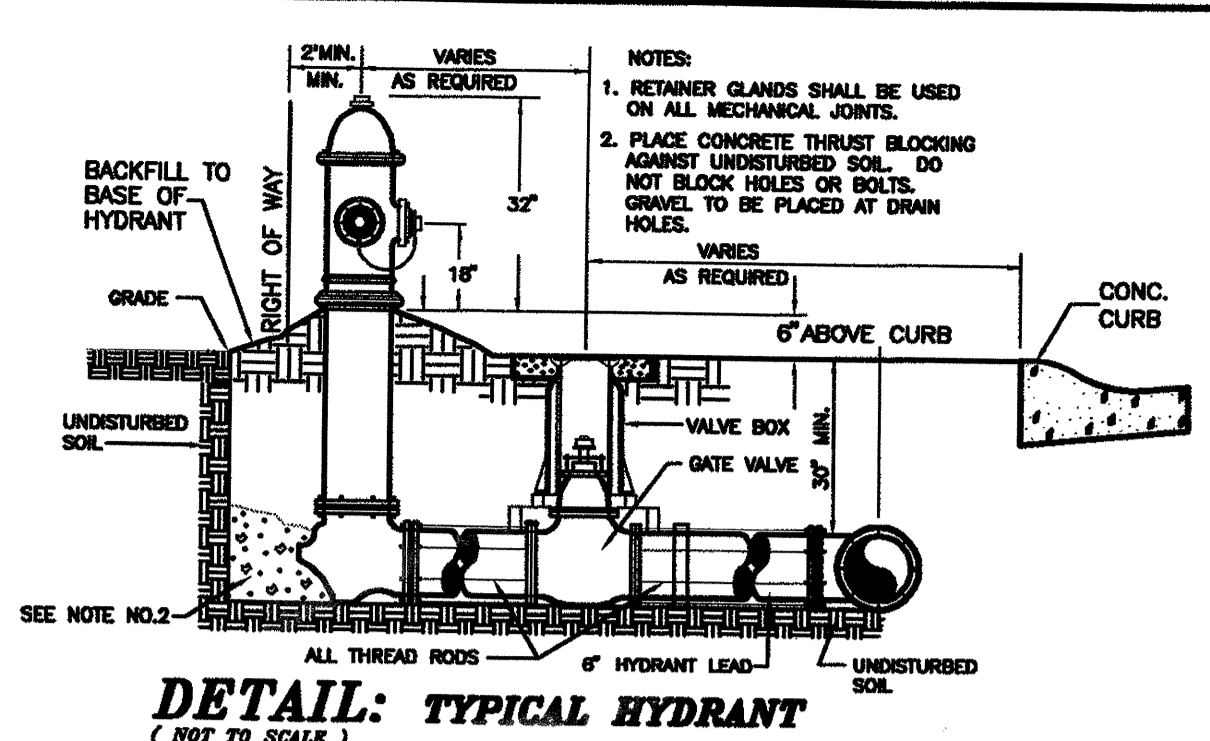


THIS DRAWING SHALL NOT BE REPRODUCED IN ANY MANNER OR USED FOR ANY PURPOSE WITHOUT WRITTEN PERMISSION.



SANITARY SEWER NOTES:

- THE SANITARY SEWER SYSTEM INSTALLATION SHALL BE IN ACCORDANCE WITH "TEN STATES STANDARDS", S.C.D.H.E.C. REGULATIONS, AND M.P.W. REGULATIONS.
- ALL SANITARY SEWER SERVICE LINES SHALL BE 8" P.V.C. (UNLESS NOTED TO BE D.I.P.) AND SHALL BE LAID ON A MINIMUM SLOPE OF % 0.50
- WHERE MANHOLES ARE LOCATED IN PAVED AREAS, THE TOPS SHALL BE ADJUSTED TO BE FLUSH WITH THE PAVEMENT. MANHOLES SHALL NOT BE LOCATED IN THE CURB AND GUTTER LINE.
- THE CONTRACTOR SHALL COORDINATE WORK SCHEDULES WITH S.C.E. & G., SOUTHERN BELL, AND COMCAST CABLE AND SHALL NOTIFY THE ENGINEER AND M.P.W. PRIOR TO BEGINNING WORK.
- THE LOCATION OF EXISTING UTILITIES ARE SHOWN IN AN APPROXIMATE WAY ONLY AND HAVE NOT BEEN INDEPENDENTLY VERIFIED BY THE OWNER OR HIS REPRESENTATIVES. EXISTING UTILITIES SHOWN DO NOT INCLUDE ALL UTILITIES THAT MAY EXIST.
- WATER TIGHT MANHOLE COVERS ARE REQUIRED (SEE MANHOLE FRAME AND COVER DETAIL).
- UPON COMPLETION OF CONSTRUCTION OF THE SANITARY SEWER SYSTEM, APPROVAL PROCEDURE SHALL BE AS FOLLOWS:
 - A PRELIMINARY INSPECTION WILL BE CONDUCTED BY THE ENGINEER AND THE CONTRACTOR.
 - A COMPLETE SEWER SYSTEM AS-BUILT SHALL BE PROVIDED BY THE OWNER. THE AS-BUILT SHALL CONFORM TO MPW DEVELOPERS' GUIDELINES, SECTION 3.1.15 AND BE PREPARED BY A PROFESSIONAL SURVEYOR REGISTERED IN THE STATE OF SOUTH CAROLINA.
 - UPON APPROVAL OF THE SANITARY SEWER AS-BUILT, THE ENGINEER SHALL CONDUCT THE PRELIMINARY S.C.D.H.E.C. INSPECTION WITH THE CONTRACTOR.
 - AFTER A PASSING PRELIMINARY INSPECTION, VISUAL INSPECTION, LOW PRESSURE AIR TEST, MANHOLE PULL, AND THE WATER SYSTEM INFORMATION HAS BEEN RECEIVED, A FINAL INSPECTION CAN BE SCHEDULED. THE SANITARY SEWER SYSTEM AND WATER SYSTEM FINAL INSPECTIONS WILL BE CONDUCTED CONCURRENTLY. REPRESENTATIVES FROM THE CONTRACTOR, THE ENGINEER AND M.P.W., WILL BE PRESENT AT THE FINAL INSPECTION.
- REFER TO M.P.W. WASTEWATER SPECIFICATIONS, SECTION 4.4, FOR COMPLETE INFORMATION ON THE INSPECTION AND TESTING PROCEDURES.

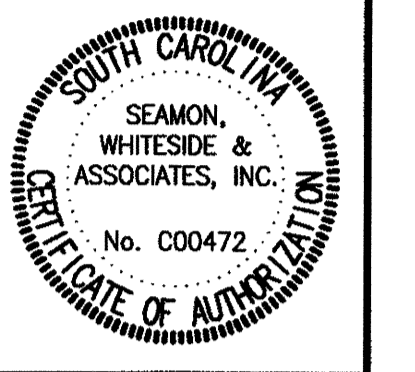
WATER DISTRIBUTION SYSTEM NOTES:

- WATER INSTALLATION SHALL BE IN ACCORDANCE WITH "TEN STATES STANDARDS", SCDHEC, AND CURRENT MPW REGULATIONS.
- CONNECTION TO WATER MAINS, INCLUDING WET TAPS, SHALL BE MADE BY MPW PERSONNEL. WET TAP CONNECTIONS SHALL CONSIST OF TAPPING SLEEVES OR TAPPING SADDLES AND TAPPING VALVES, PROVIDED BY MPW. THE CONTRACTOR SHALL EXCAVATE FOR THE TAP BY MPW. REFER TO MPW SPECIFICATIONS, DETAIL #10, FOR DETAILS OF EXCAVATION REQUIREMENTS.
- RADIUS (DEFLECT) WATER LINES IN LIEU OF FITTINGS IN ACCORDANCE WITH THE MANUFACTURER'S SPECIFICATIONS.
- CONTRACTOR SHALL NOTIFY MPW, SCDHEC, AND THE ENGINEER PRIOR TO BEGINNING CONSTRUCTION AND SHALL SCHEDULE PRE-CONSTRUCTION CONFERENCE WITH MPW AND THE ENGINEER. IN ADDITION, THE CONTRACTOR SHALL COORDINATE WORK SCHEDULE WITH SCDHEC, BELLSOUTH, AND COMCAST CABLE.
- ALL WATER LINES SHALL HAVE A MINIMUM COVER OF 36".
- CONTRACTOR SHALL VERIFY THE LOCATION AND ELEVATION OF ALL EXISTING UTILITIES PRIOR TO BEGINNING WORK. THE CONTRACTOR SHALL NOTIFY THE ENGINEER OF ANY DISCREPANCIES FOUND IN THE FIELD OR ON THE DRAWINGS PRIOR TO BEGINNING OR CONTINUING WORK.
- WATER VALVES SHALL NOT BE LOCATED WITHIN THE CURB AND GUTTER.
- UPON COMPLETION OF CONSTRUCTION OF THE WATER SYSTEM, APPROVAL PROCEDURES SHALL BE AS FOLLOWS:
 - A PRELIMINARY INSPECTION WILL BE CONDUCTED BY THE ENGINEER AND THE CONTRACTOR.
 - A PRESSURE TEST WILL BE SCHEDULED BY THE ENGINEER AND WITNESSED BY MPW AND THE ENGINEER.
 - AFTER PASSING PRESSURE TEST, WATER SAMPLE TESTING SHALL BE PERFORMED IN ACCORDANCE WITH MPW WATER SPECIFICATIONS, SECTION 4.4.3.
 - A COMPLETE WATER SYSTEM AS-BUILT SHALL BE PROVIDED BY THE OWNER. THE AS-BUILT SHALL CONFORM TO MPW DEVELOPERS' GUIDELINES, SECTION 3.1.15 AND BE PREPARED BY A PROFESSIONAL SURVEYOR REGISTERED IN THE STATE OF SOUTH CAROLINA. THE CONTRACTOR SHALL COORDINATE SCHEDULES WITH THE SURVEYOR PREPARING THE AS-BUILT DURING THE WATER MAIN INSTALLATION PROCESS, AS NEEDED FOR LOCATING THE WATER MAIN, VALVES, BENDS, TEES, ETC.
 - THE OWNER SHALL PROVIDE AN EASEMENT PLAT SHOWING EXISTING EASEMENTS AND NEW EASEMENTS IN A FORMAT ACCEPTABLE TO MPW FOR RECORDING. THE OWNER IS ALSO RESPONSIBLE FOR PREPARATION OF ALL LEGAL DOCUMENTS AS REQUIRED BY MPW.
 - AFTER THE ABOVE INFORMATION HAS BEEN RECEIVED AND APPROVED, AND THE REQUIRED SANITARY SEWER SYSTEM INFORMATION HAS BEEN RECEIVED, A SCDHEC INSPECTION CAN BE SCHEDULED. THE WATER SYSTEM AND SANITARY SEWER SYSTEM SCDHEC INSPECTIONS WILL BE CONDUCTED CONCURRENTLY. REPRESENTATIVES FROM THE CONTRACTOR, THE ENGINEER, AND MPW SHALL BE PRESENT AT THE FINAL INSPECTION.

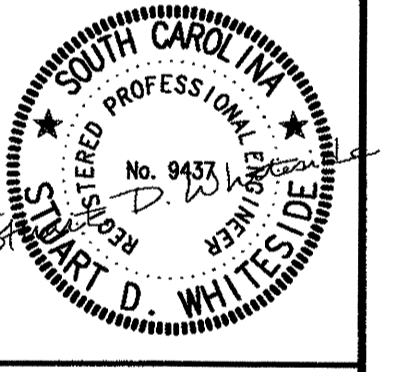
9. REFER TO MPW WATER SPECIFICATIONS FOR COMPLETE INFORMATION ON THE INSPECTION AND TESTING PROCEDURES AND FOR COMPLETE AS-BUILT REQUIREMENTS:

- THE CONTRACTOR SHALL PROVIDE A TEMPORARY ABOVE GROUND, BACKFLOW PREVENTER WHERE NOTED ON THE PLANS, IN ACCORDANCE WITH MPW WATER SPECIFICATIONS, SECTION 1.6. THE BACKFLOW PREVENTER SHALL BE INSTALLED, INSPECTED, AND APPROVED BY MPW PRIOR TO BEING PUT INTO OPERATION AND FILLING THE NEW WATER MAINS WITH WATER. RECOMMENDED SIZE OF THE BACKFLOW PREVENTER SHOULD BE EQUAL TO SIZE OF THE WATER MAIN. (ABSOLUTE MIN. ALLOWABLE SIZE SHALL BE 6"). TESTING REQUIREMENTS, MINIMUM ALLOWABLE SIZE SHALL BE 6".
- PROVIDE VALVE MARKERS AT ALL VALVES AND BOXES PER MPW REQUIREMENTS. ALL VALVES (G.V.) SHALL BE GATE VALVES WITH CAST IRON BOXES.
- TRACER WIRE (1/2 GAUGE INSULATED COPPER) SHALL BE PLACED IN TRENCHES PER MPW SPECIFICATIONS (SEE DETAIL).
- WHERE NOTED, A 3" MINIMUM GAP SHALL BE MAINTAINED BETWEEN NEW AND EXISTING WATER MAINS UNTIL APPROVED FOR CONNECTION BY MPW. THE NEW WATER MAIN SHALL BE PROVIDED WITH TEMPORARY CAP UNTIL CONNECTION IS MADE. THE FINAL CONNECTION SHALL CONSIST OF A "SPOOL PIECE" W/ SLEEVES(S) SUPPLIED BY THE CONTRACTOR. REFER TO MPW WATER SPECIFICATIONS, SECTION 1.6.
- SPECIAL NOTE: FIRE HYDRANTS, WATER VALVES, AND OTHER WATER ITEMS SYMBOLS ARE SHOWN IN LARGE SCALE FOR CLARITY. REFER TO THE DETAIL SHEET FOR SPECIFIC LOCATION REQUIREMENTS FOR FIRE HYDRANTS AND OTHER ITEMS.
- ALL WATER MAINS AND PROPOSED FIRE HYDRANTS SHALL BE CENTERED IN A 15" MPW EASEMENT.
- ALL WATER CROSSINGS UNDER STORM DRAINAGE SHALL HAVE A MINIMUM SEPARATION OF 24" 20' L.F. OF DUCTILE IRON PIPE (10' L.F. EACH SIDE) SHALL BE PLACED UNDER STORM DRAINAGE AT THE CROSSING.
- CONTRACTOR SHALL INSTALL THRUST BLOCKING AS REQUIRED AT ALL WATER LINE BENDS, ETC. MEETING MPW SPECIFICATIONS.

SEAMON, WHITESIDE & ASSOCIATES, INC.
LANDSCAPE ARCHITECTURE
CIVIL ENGINEERING
PLANNING
503 WANDO PARK BLVD.
SUITE 100
MOUNT PLEASANT, SC
29464-7849
(843) 884-1667
(843) 884-6944 (FAX)
e-mail: swaiswasc.com



BELLE ISLE AVENUE EXTENSION
(BELLE HALL COMMERCIAL CENTER PHASE 2 ROAD EXTENSIONS)
BELLE HALL LIMITED PARTNERSHIP
TOWN OF MT. PLEASANT, SOUTH CAROLINA



DRAWN BY: WSC
CHECKED BY: SDW

PLOT SCALE:
1" = 50'
SERVER FILENAME:
Drawing: S:\2006\06\BelleHall\CD\BelleHall_C7.dwg

PROJECT: 4751.20
DATE: 1/06/06

NO.	DATE	REVISION NOTES	BY	APP	DATE	BY	APP
1	1/06/06	FINAL SUBMITTAL TO TOWN					
2	1/27/06	WATER DISTRIBUTION & SANITARY SEWER NOTES ADDED					
3	3/20/06	WATER DISTRIBUTION & SANITARY SEWER NOTES ADDED					
4	4/27/06	REVISED SITE PLAN PER UPDATED BOUNDARY					
5							
6							
7							
8							
9							
10							

UTILITY DETAILS AND SEWER PROFILE