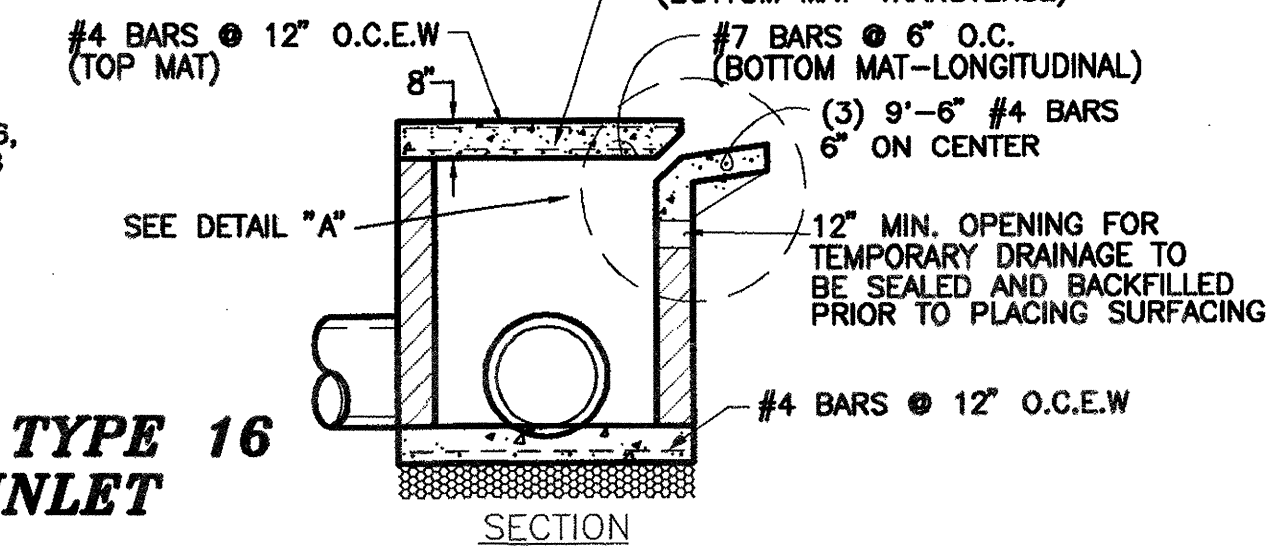
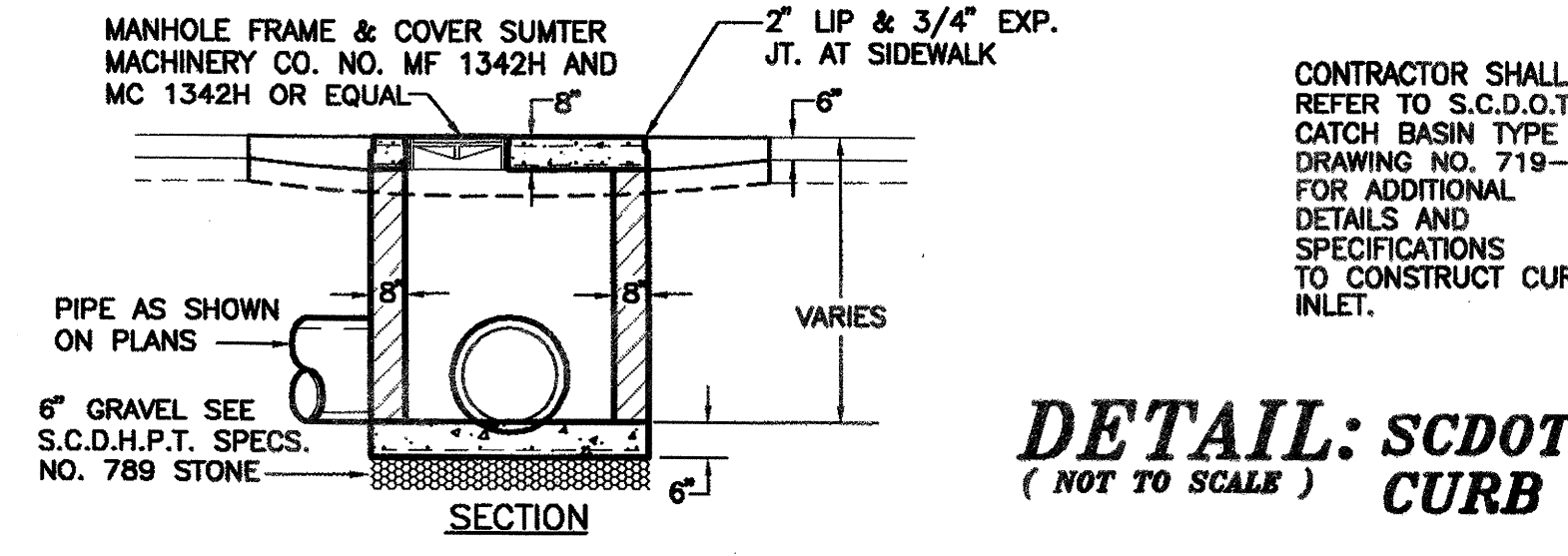
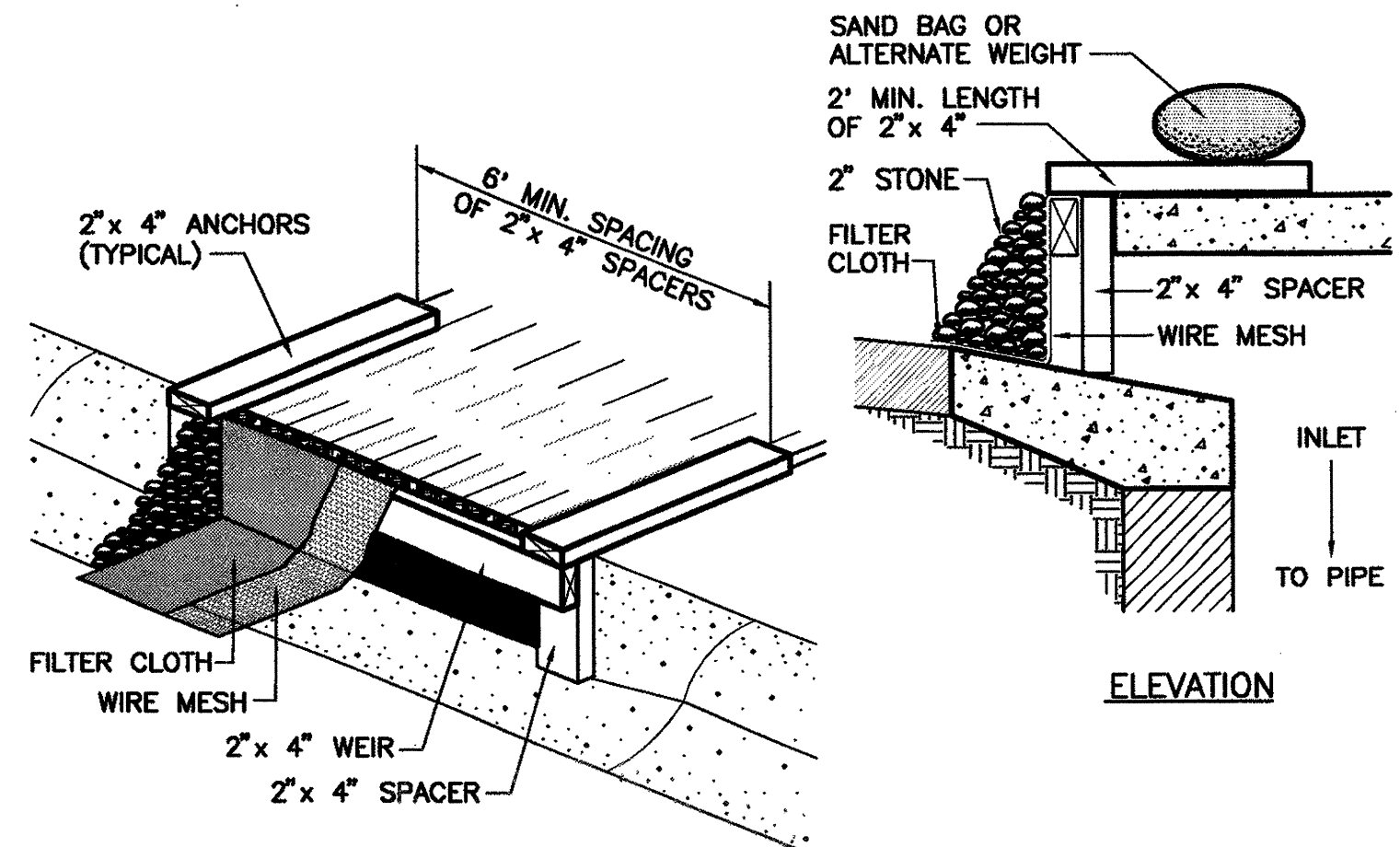


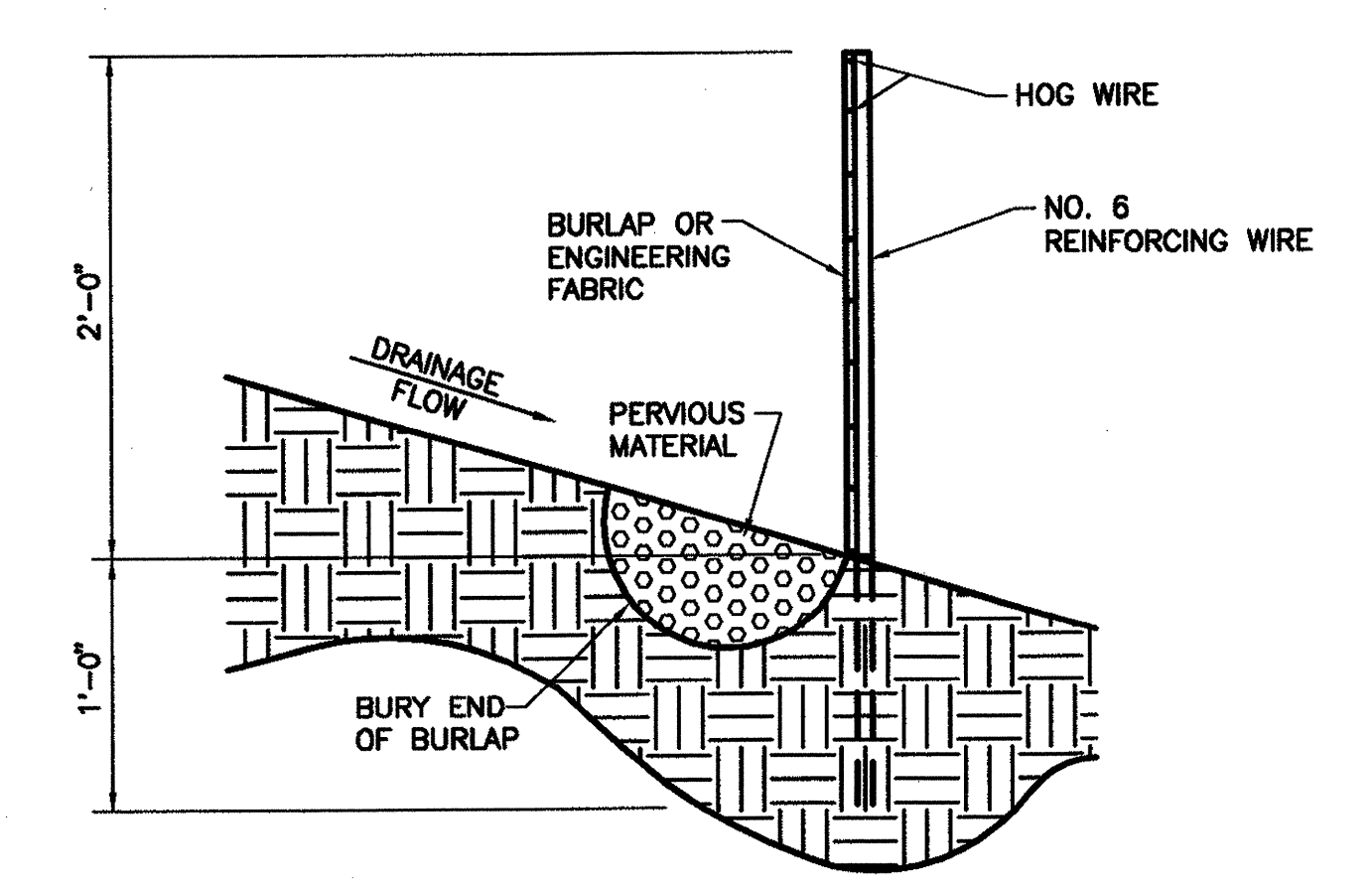
- NOTES:
1. TIE INVERT OF UNDERDRAIN (IF REQ'D.) 36" MIN. BELOW TOP OF BOX.
  2. FOR CONSTRUCTION OF THE CURB INLET WALLS USE EITHER CONCRETE BRICK MASONRY OR CLASS A CONCRETE.
  3. IF DESIRED BOXES AND TOPS MAY BE PRECAST PRIOR TO INSTALLATION. LIFT HOLES MAY BE PLACED AS NECESSARY. ALL LIFT HOLES SHALL BE GROUTED PRIOR TO COMPLETION OF INSTALLATION.
  4. BOXES OVER 4'-6" IN DEPTH SHALL HAVE 12" WIDE CAST IRON OR POLYPROPYLENE PLASTIC STEPS. FRAME AND COVER SHALL BE CONSTRUCTED DIRECTLY OVER STEPS.
  5. CONTRACTOR SHALL REFER TO SCDOT CATCH BASIN TYPE 18, DWG. # 719-20 FOR CONFIGURATION OF #4 BARS AROUND MANHOLE FRAME & COVER.



**DETAIL: SCDOT TYPE 16 CURB INLET**  
(NOT TO SCALE)

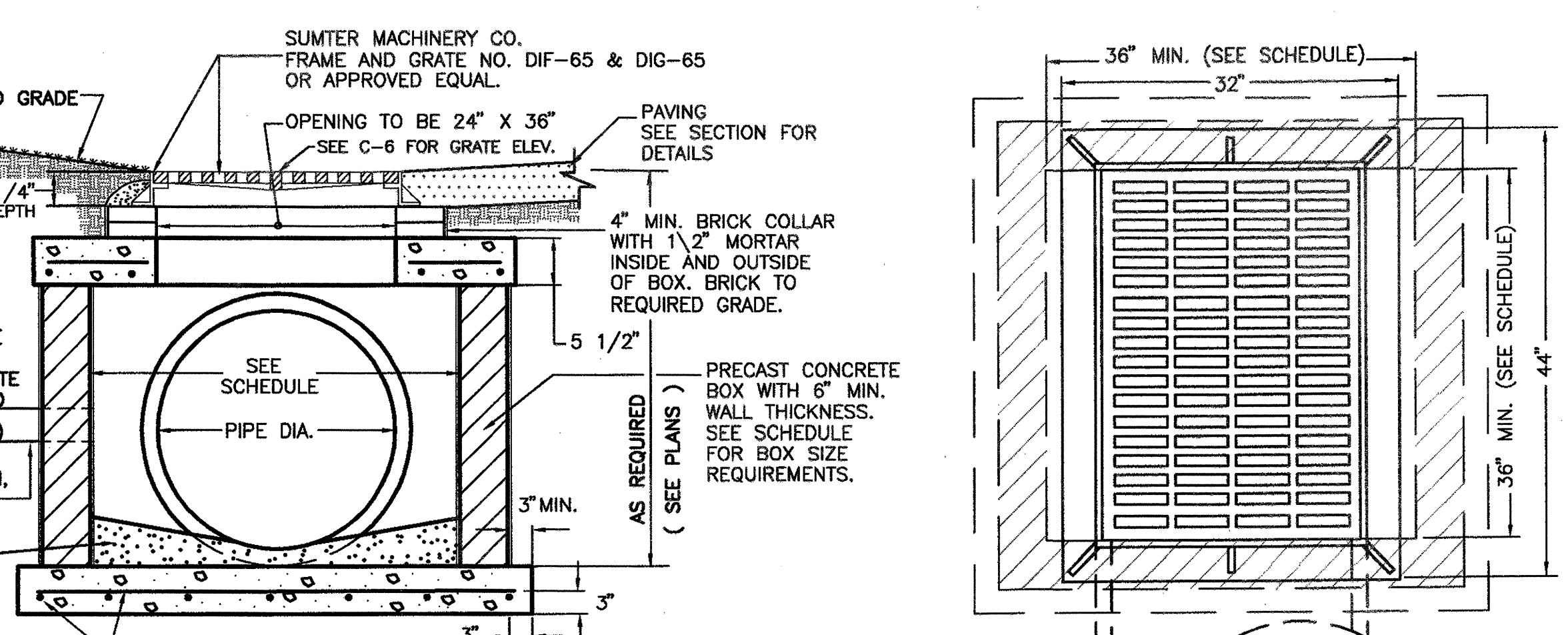


**DETAIL: CURB INLET SILT FENCE**  
(NOT TO SCALE)

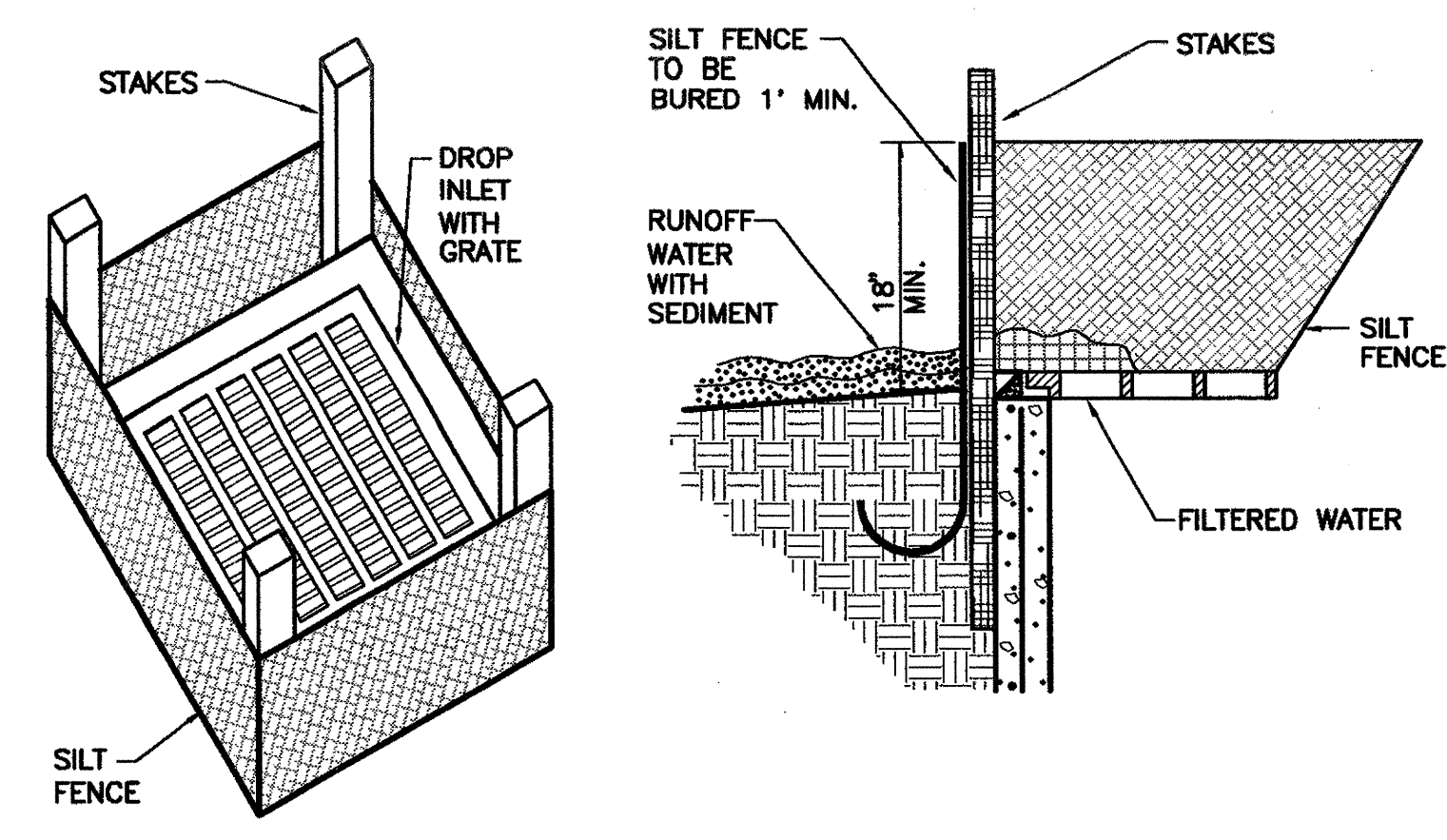


**DETAIL: SILT FENCE**  
(NOT TO SCALE)

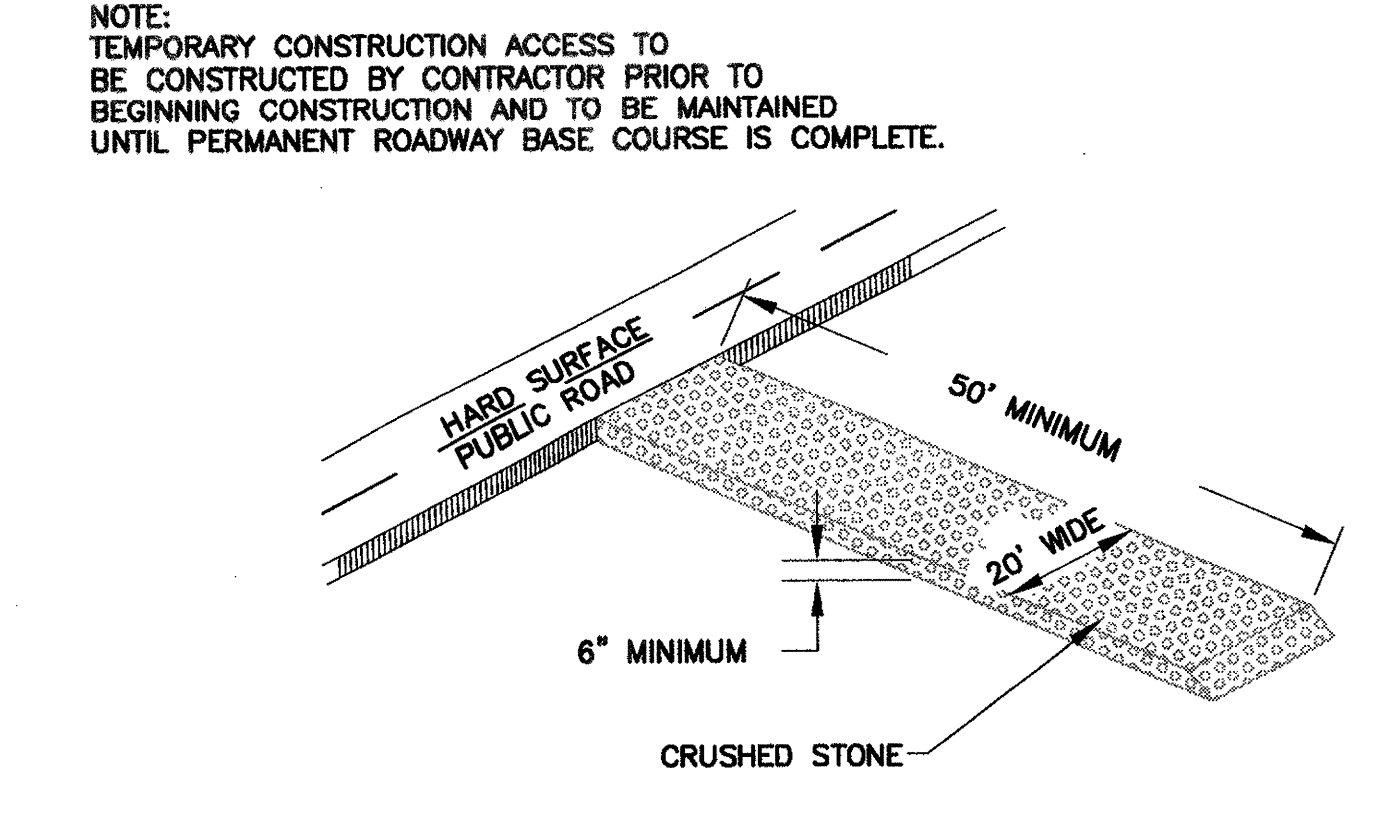
PIPE DIA.	W
15"-24"	3'-0"
30"-36"	4'-0"
42"-48"	5'-0"
54"-60"	6'-0"



**DETAIL: CATCH BASIN**  
(NOT TO SCALE)

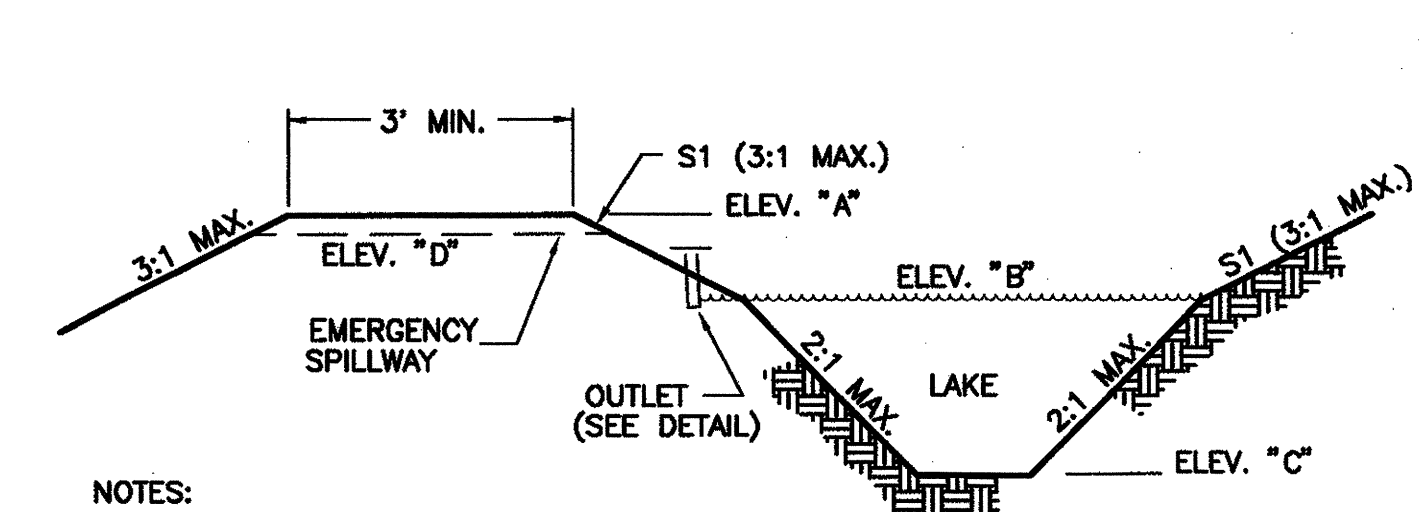


**DETAIL: DROP INLET SEDIMENT FILTER**  
(NOT TO SCALE)



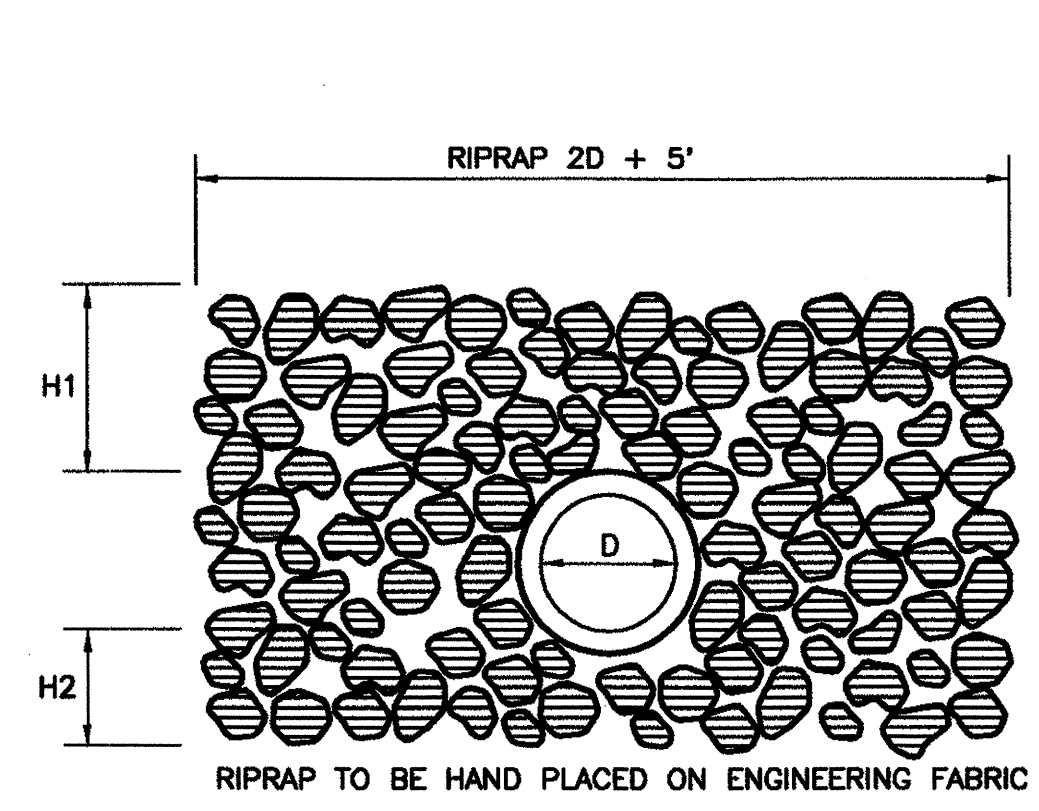
**TEMPORARY CONSTRUCTION ACCESS**  
(NOT TO SCALE)

POND	SLOPE S1	ELEVATIONS			
		"A"	"B"	"C"	"D"
POND C1C2	3:1	11.0	8.0	2.0	10.6

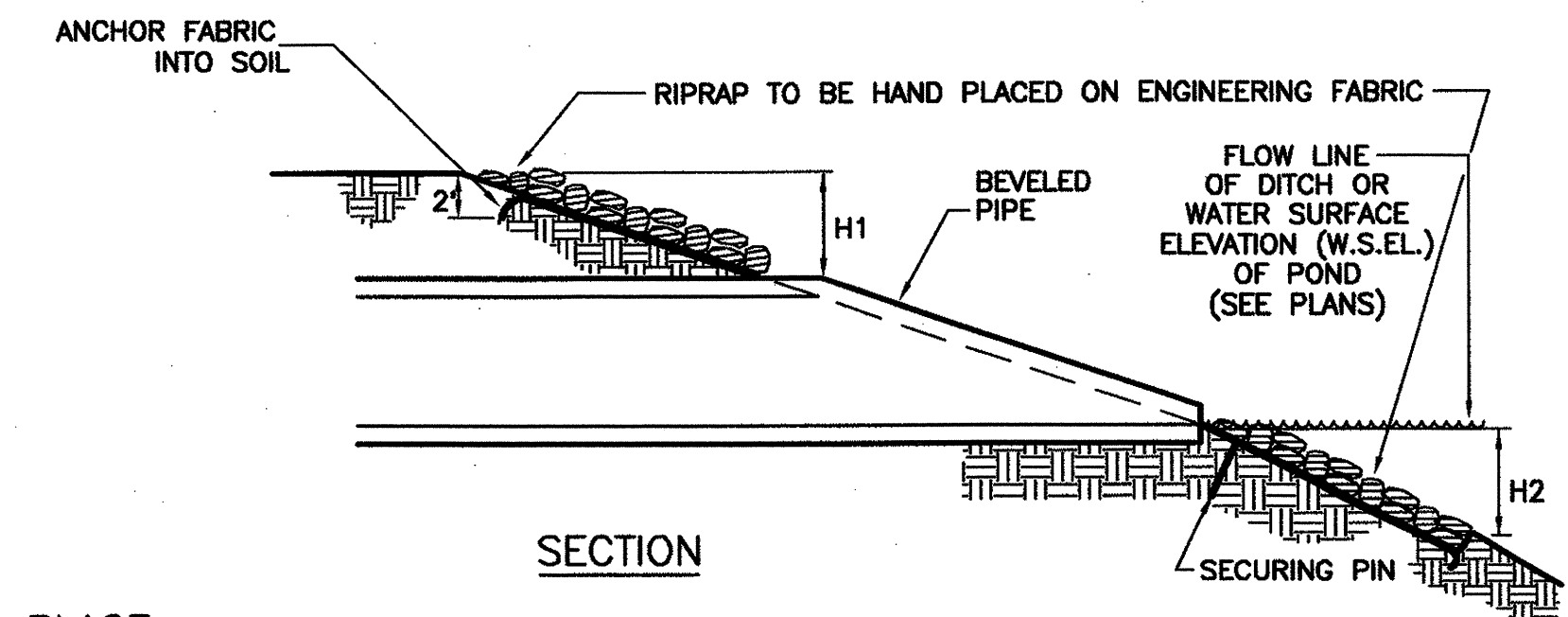


- NOTES:
1. HYDROSEED BANKS AND TOP OF BANKS/SLOPES UNTIL STABILIZED. HYDROSEEDING SHALL BEGIN WITHIN ONE WEEK OF EXCAVATION TO BEGIN STABILIZATION. ADDITIONAL SEEDING MAY BE REQUIRED AS DIRECTED BY THE ENGINEER.
  2. 8' WIDE EMERGENCY SPILLWAY TO BE CONSTRUCTED ON DIKE AT GIVEN GREST ELEV. "A" AT LOCATION SELECTED BY ENGINEER. SPILLWAY TO EXTEND FROM BELOW NORMAL WATER ELEV. ON RESERVOIR SIDE TO TOE OF DIKE ON OUTLET SIDE. SPILLWAY TO BE HYDROSEEDED UNTIL STABILIZED ON TOP OF DIKE AND RIPRAPPED ON ENGINEERING FABRIC ON SLOPES OF DIKE.

**DETAIL: LAKE AND OUTLET STRUCTURE**  
(NOT TO SCALE)

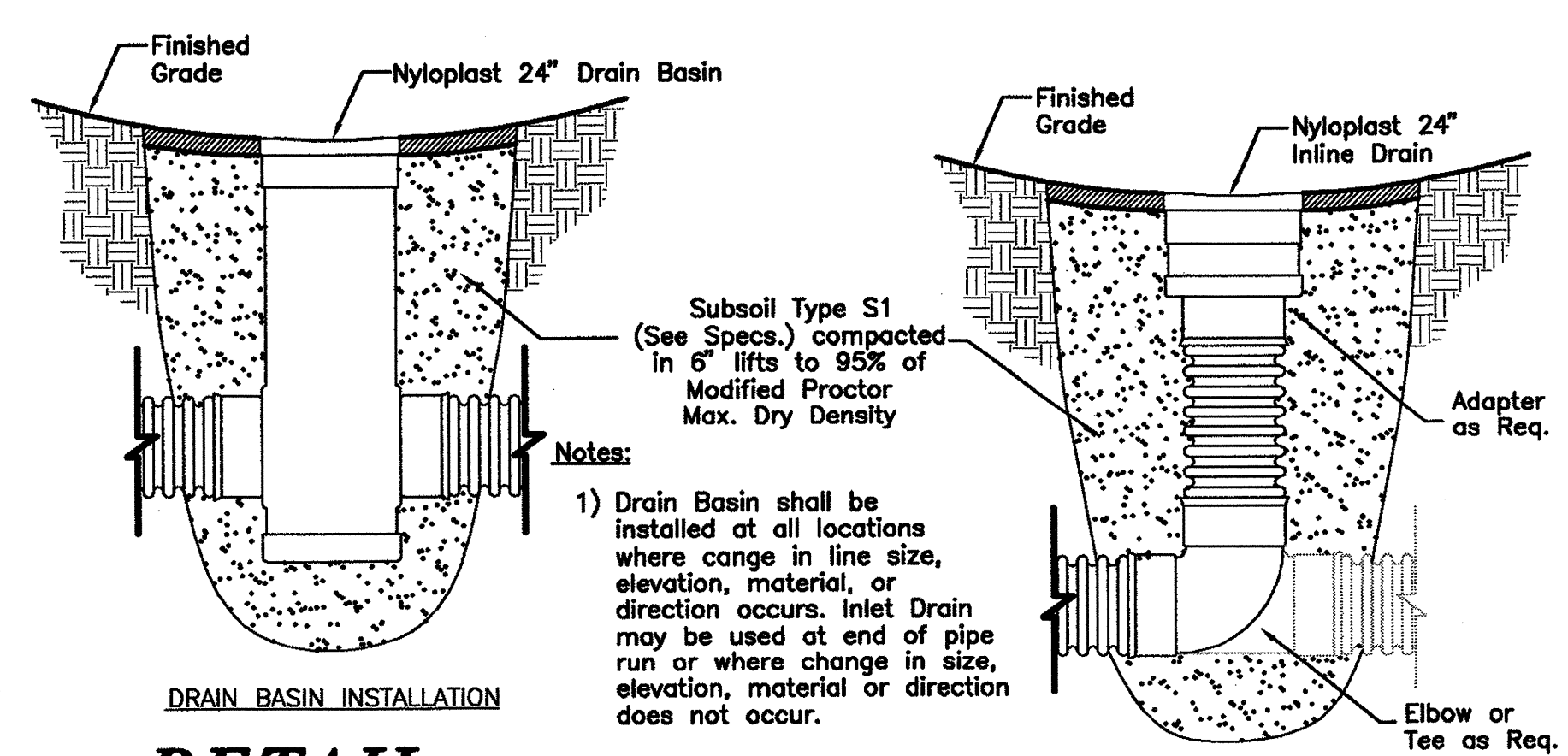


- H1 = 2' MINIMUM OR TO TOP OF POND OR DITCH.  
H2 = FOR DITCH: 1' MINIMUM OR TO FLOW LINE OF DITCH.  
FOR POND: 1' MINIMUM BELOW W.S.E.L. OR INVERT OF PIPE, WHICHEVER IS LOWER.



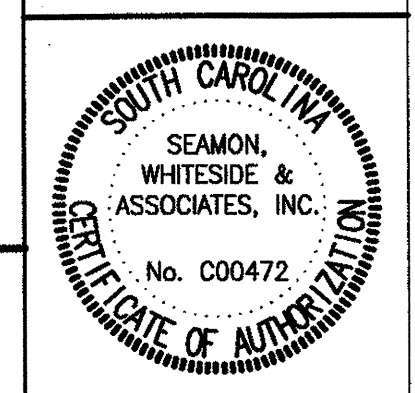
RIPRAP SHALL BE GROUTED TOGETHER IN PLACE.

**DETAIL: RIPRAP AT CULVERT OUTLET**  
(NOT TO SCALE)

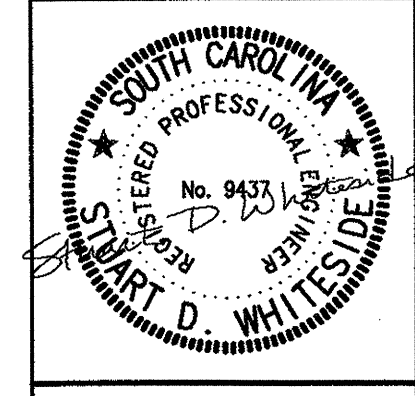


**DETAIL: YARD INLET**  
(NOT TO SCALE)

**SEAMON, WHITESIDE & ASSOCIATES, INC.**  
LANDSCAPE ARCHITECTURE  
CIVIL ENGINEERING  
PLANNING  
503 WANDO PARK BLVD.  
SUITE 100  
MOUNT PLEASANT, SC  
29464-7849  
(843) 884-1667  
(843) 884-6944 (FAX)  
e-mail: swaswascom



**OFFICES at BELLE HALL**  
Southeast Management and Leasing Corporation  
Mount Pleasant, South Carolina



DRAWN BY: AJA  
CHECKED BY: SDW  
PLOT SCALE: 1" = 1'  
SERVER FILENAME: 3552\CDWG\3552draindets.DWG  
PROJECT: 4751.20  
DATE: 01/06/06

NO.	DATE	REVISION NOTES	BY	BP	X	X	X	X	X
1	01/06/06	FINAL SUBMITTAL TO TOWN			X	X	X	X	X

**DRAINAGE & EROSION CONTROL DETAILS**  
SHEET C5 OF 7