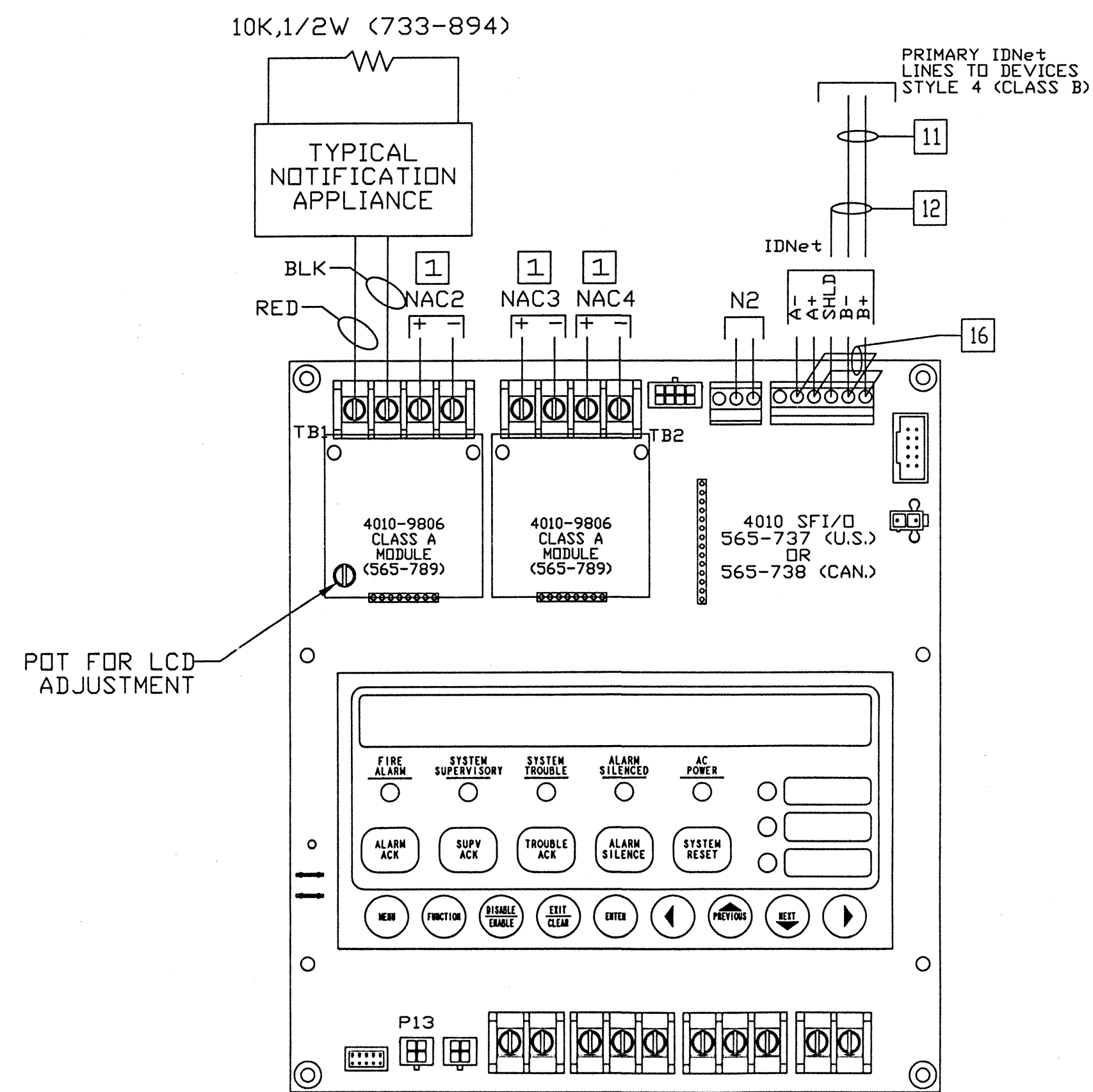


### 4010 FIRE ALARM CONTROL PANEL

## 2-WIRE STYLE Y (CLASS B) NOTIFICATION APPLIANCE CIRCUITS (NAC) (REVERSE POLARITY) & ADDRESSABLE IDNet STYLE 4 (CLASS B) WIRING

NOTE: CONTACT YOUR LOCAL SIMPLEX OFFICE FOR MORE DETAILED INFORMATION. DISTANCES ARE BASED ON A TOTAL DROP OF 2.7V.

ALARM CURRENT	18 AWG	16 AWG	14 AWG	12 AWG	LINE RESISTANCE
0.11A	1920 FT.	3050 FT.	4850 FT.	774 FT.	24.5 OHMS
0.22A	962 FT.	1530 FT.	2435 FT.	3872 FT.	12.3 OHMS
0.55A	384 FT.	610 FT.	944 FT.	1542 FT.	4.9 OHMS
1.00A	211 FT.	335 FT.	519 FT.	850 FT.	2.7 OHMS
1.65A	126 FT.	203 FT.	314 FT.	516 FT.	1.64 OHMS
1.98A	106 FT.	170 FT.	262 FT.	428 FT.	1.36 OHMS



#### NOTIFICATION NOTES:

- PLACE A 10K, 1/2W (378-030 - BROWN/BLACK/DRANGE) RESISTOR FROM '+' TO '-' TERMINALS OF UNUSED CIRCUIT(S).
- ALL WIRING TO BE MINIMUM 18 AWG OR TO LOCAL CODE.
- ALL WIRING IS SUPERVISED.
- MAXIMUM CURRENT IS 2A EACH CIRCUIT. SEE CHART FOR LINE DISTANCE.
- SUPERVISORY CURRENT IS 1.85mA/CIRCUIT AT 24 VDC.
- ALARM CURRENT IS 2.0A AT 24VDC (EACH CIRCUIT).
- VOLTAGE RATING - NOMINAL 24VDC, 2V p-p RIPPLE (MAX.)
- MAXIMUM ALLOWED CURRENT IS 4A UNLESS EXPANSION POWER IS AVAILABLE (4010-9813 OR 4010-9814). ANY CURRENT DRAW FROM TBS (AUXILIARY POWER) IS TO BE DEDUCTED FROM THE AVAILABLE 4A.
- TERMINAL DESIGNATIONS '+' AND '-' ARE FOR THE ALARM STATE. WIRE RED TO '+' AND BLACK TO '-'.
- WHEN 4010-9813 OR 4010-9814 IS USED FOR NAC POWER REMOVE RED SHUNT AT P13 AND CONNECT RED HARNESS FROM POWER SUPPLY TO SFT/D. NAC1 AND NAC2 POWER IS 4A (MAX) FROM BASE UNIT. NAC3 AND NAC4 POWER IS 4A (MAX) FROM 4010-9813 OR 4010-9814 WITH 4010-9813, MINIMUM NAC LOAD IS 100mA.

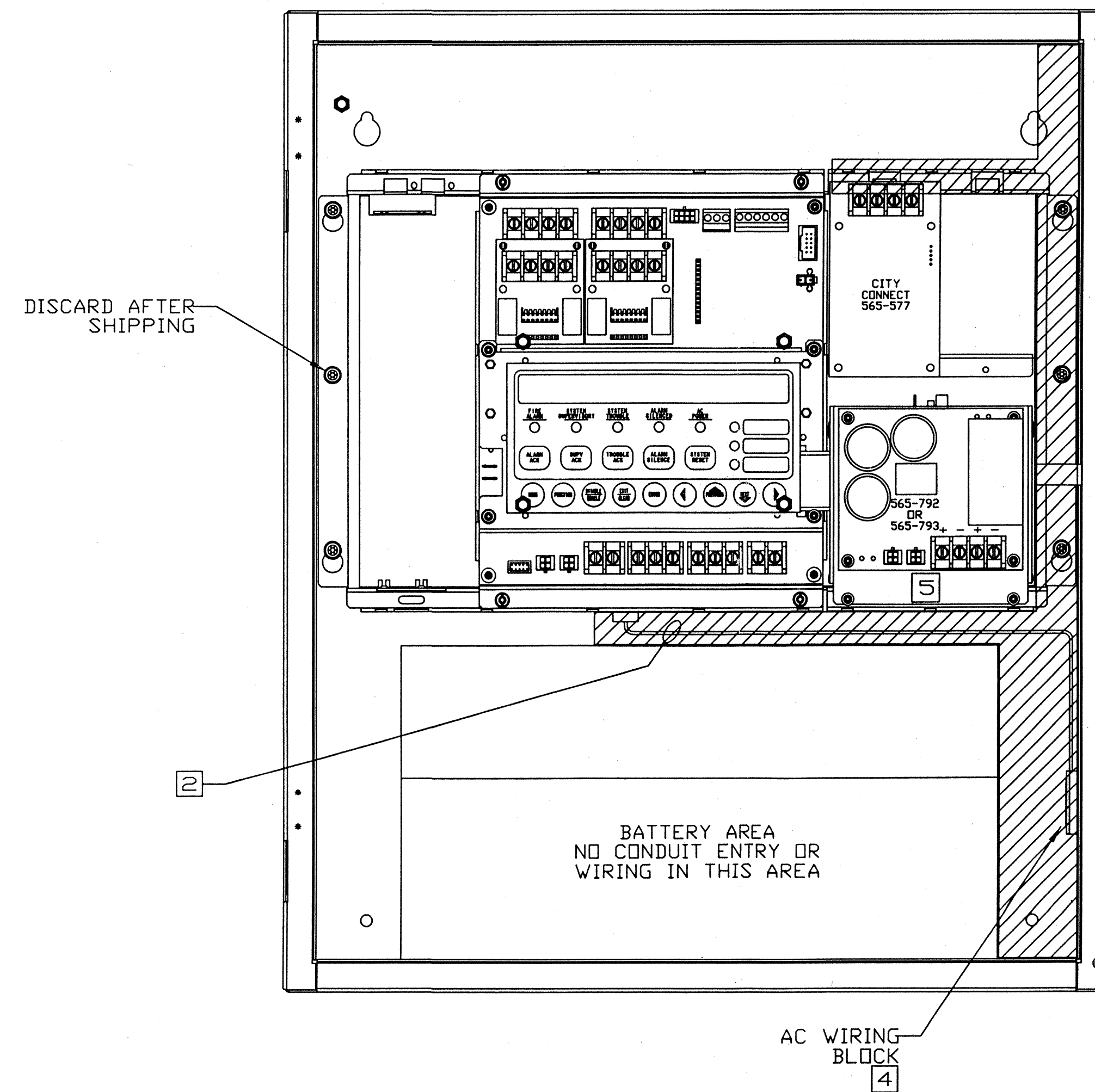
#### COMPATIBLE APPLIANCES:

- 4051 HORN (2091 SERIES)
- 4060 BELL (2091 SERIES)
- 4065 CHIME (2902 SERIES)
- 4903 OR 4904 SERIES STROBE

#### INITIATION (IDC) NOTES:

- ALL WIRING TO BE MINIMUM 18AWG.
- CONNECT SHIELD TO TB4-3 (MARKED 'SHIELD') WHEN USING SHIELDED WIRE.
- ALL WIRING IS SUPERVISED.
- IDNet COMMUNICATION POWER: 36.25V (MAX.) AT 5A 3333 BAUD
- REFER TO INSTRUCTIONS PACKED WITH EACH ADDRESSABLE DEVICE FOR CONNECTIONS.
- JUMPER 'B-' TO 'A-' AND 'B+' TO 'A+'.
- ANY WIRING LEAVING THE BUILDING REQUIRES OVER VOLTAGE PROTECTORS 2081-9044 WHERE IT LEAVES THE BUILDING AND ANOTHER WHERE IT RE-ENTERS THE BUILDING. ONLY 4 SUPPRESSORS TOTAL ARE ALLOWED ON THE CHANNEL.
- REFER TO STR SALES ENGINEERING'S 4010 FIELD WIRING GUIDE AND STR 574-709 FOR WIRING OF IDNet DEVICES.
- FOR STYLE 4 OPERATION, MAXIMUM DISTANCE IS 2,500 FT. TO THE FURTHEST DEVICE. T-TAPPING IS ALLOWED. MAXIMUM ALLOWED WIRING IS 10,000 FT. TOTAL. MAXIMUM ALLOWED LINE TO LINE CAPACITANCE ('+' TO '-') IS 0.58uF.

## 4010 FIRE ALARM CONTROL PANEL AC INPUT WIRING AND BATTERY CONNECTIONS & POWER LIMITED GUIDELINES



#### NOTES:

- CONNECT 120VAC 60Hz TO THE AC WIRING BLOCK AS MARKED ON THE WIRING BLOCK. BASE SYSTEM = 2A (MAX.) W/EXP. OR SUPPRESSION SUPPLY = 4A (MAX.).
- FOR CONNECTION TO AC WIRING BLOCK FROM SYSTEM:

733-948	120V (BASE SYSTEM)
733-949	120V (BASE W/EXP. OR SUPPRESSION SUPPLY)
733-954	220/240V (BASE SYSTEM)
733-955	220/140V (BASE W/EXP. OR SUPPRESSION SUPPLY)

- FOR 220/240VAC 50Hz/60Hz, CONNECT TO THE AC WIRING BLOCK AS MARKED. BASE SYSTEM = 1A (MAX.) W/EXP. OR SUPPRESSION SUPPLY = 2A (MAX.)
- CONNECT A 12AWG COPPER GROUND WIRE FROM SAFETY GROUND IN THE ELECTRICAL DISTRIBUTION PANEL TO THE 4010 SAFETY GROUND STUD.
- ALL WIRING TO BE LOCAL CODE.
- ALL WIRING EXCEPT SAFETY GROUND IS SUPERVISED.
- COMPATIBLE BATTERIES:  
2081-9272 6.2AH  
2081-9274 10AH  
2081-9288 12.7AH  
2081-9287 25AH  
IS 1.4A. BATTERIES ARE 24VDC.

- SHADED AREA SHOWS ROUTING LOCATION FOR NON-POWER LIMITED WIRING INCLUDES AC INPUT, BATTERY CONNECTIONS AND CITY CONNECT WIRING. ALL OTHER WIRING IS POWER LIMITED.
- MAINTAIN AT LEAST 1/4" SPACING BETWEEN POWER LIMITED WIRING AND NON-POWER LIMITED WIRING.

USE BATTERY HARNESS 733-945 MAXIMUM CHARGER CURRENT