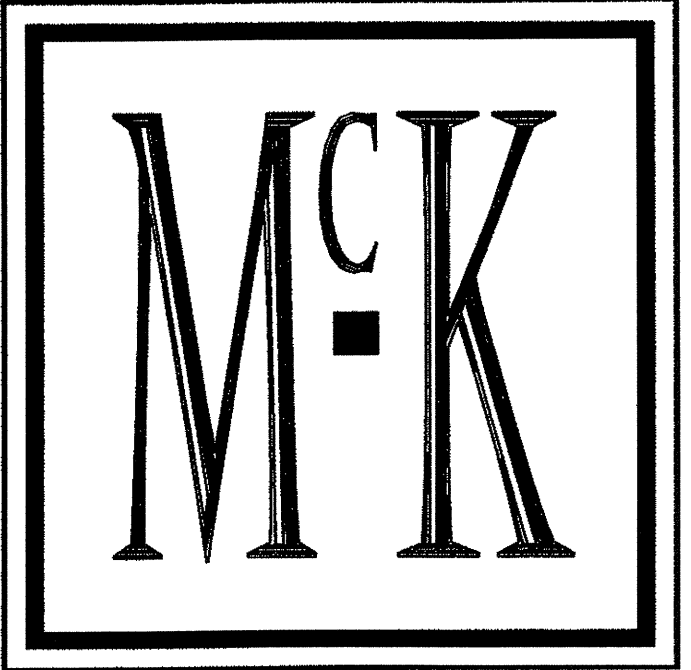
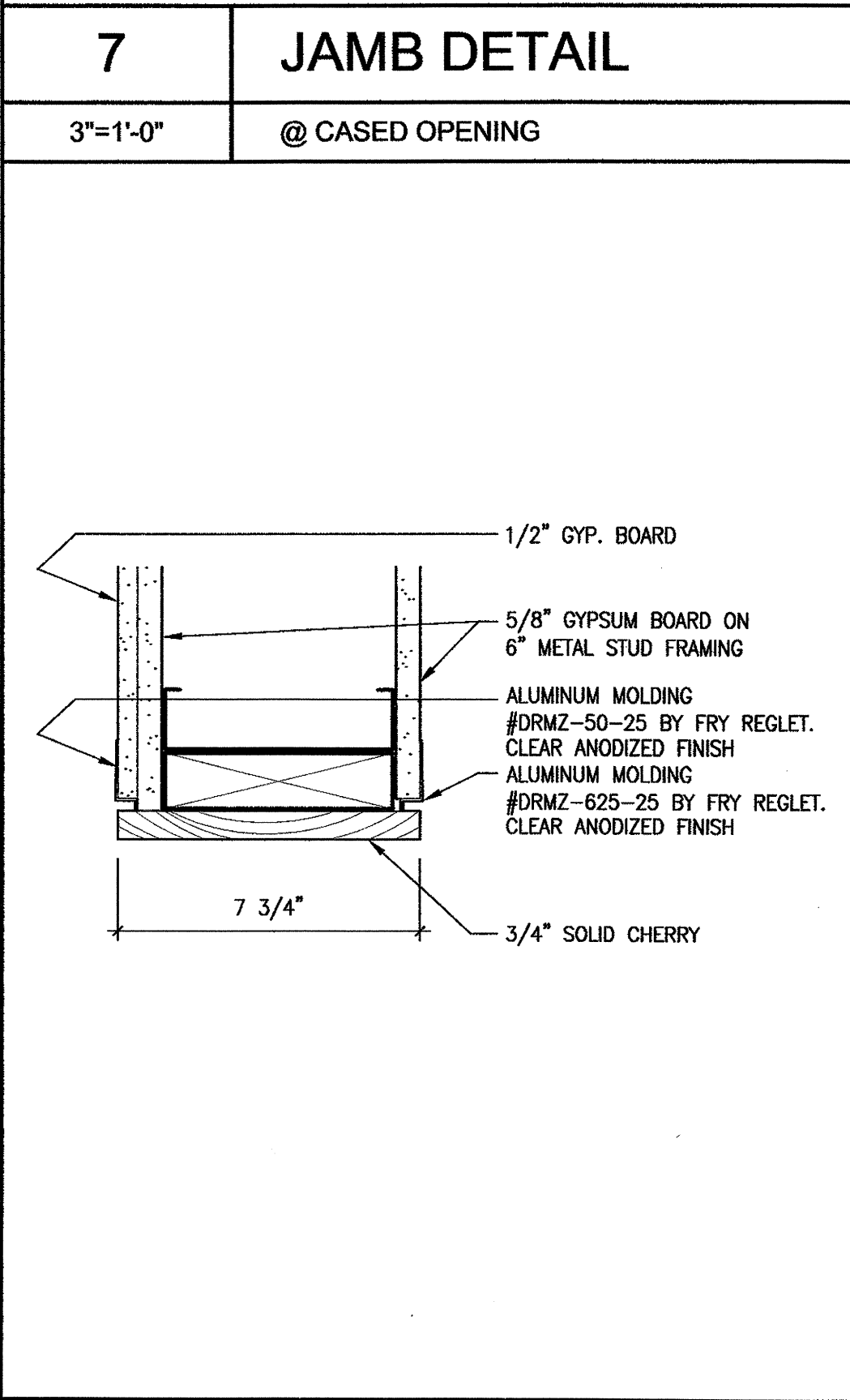
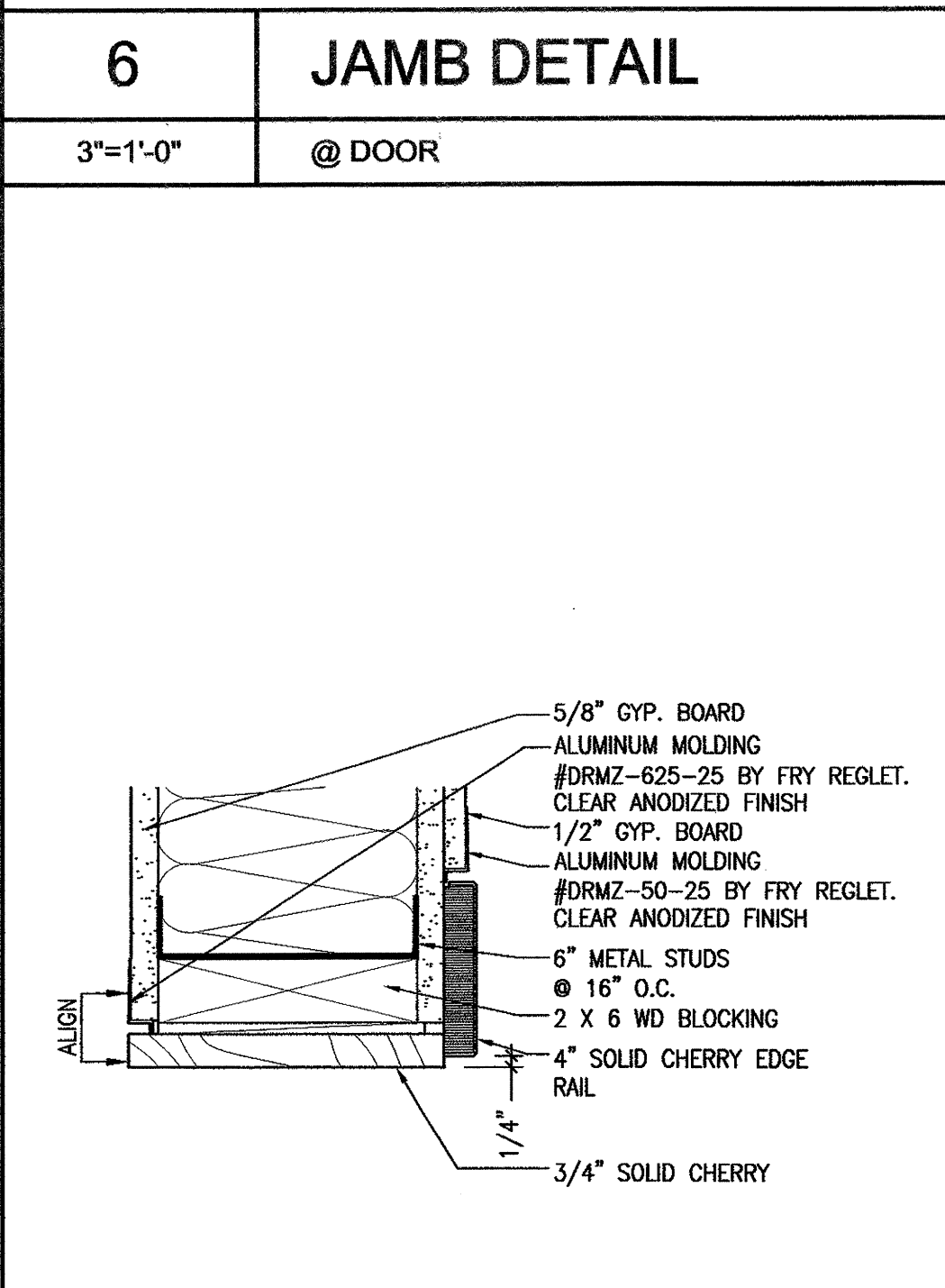
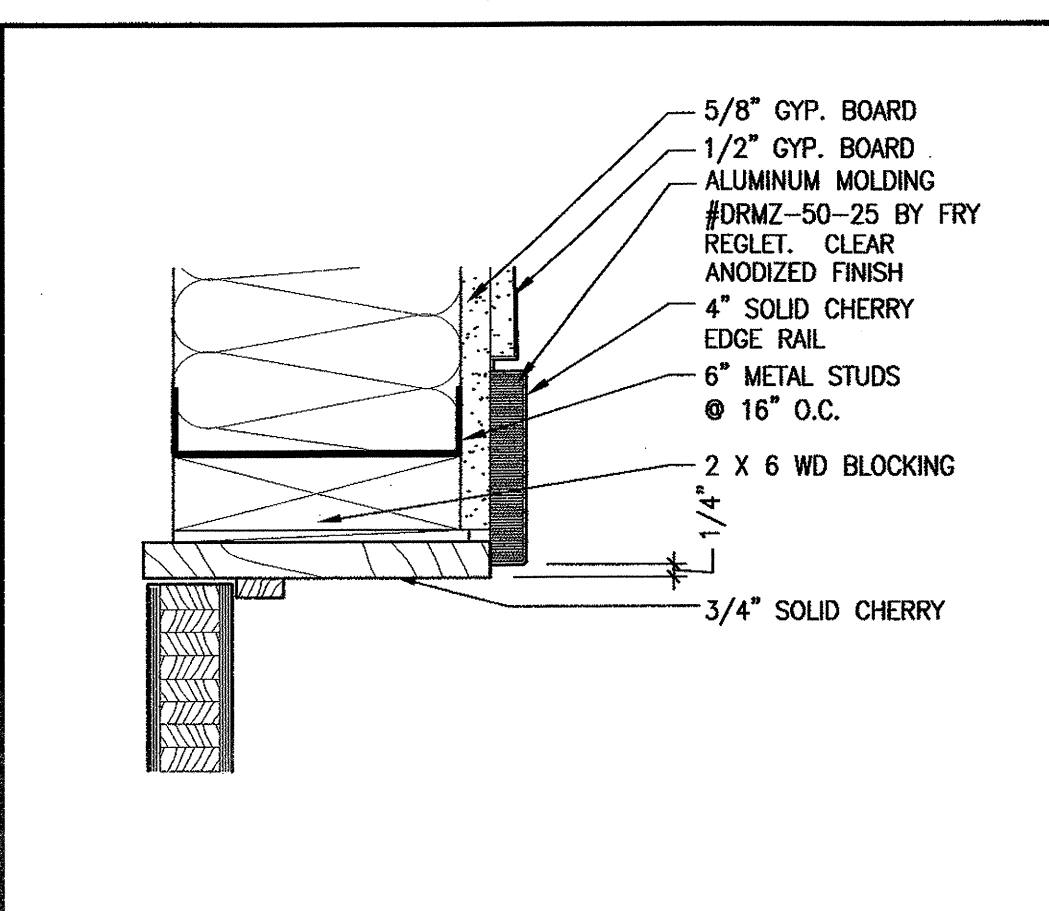
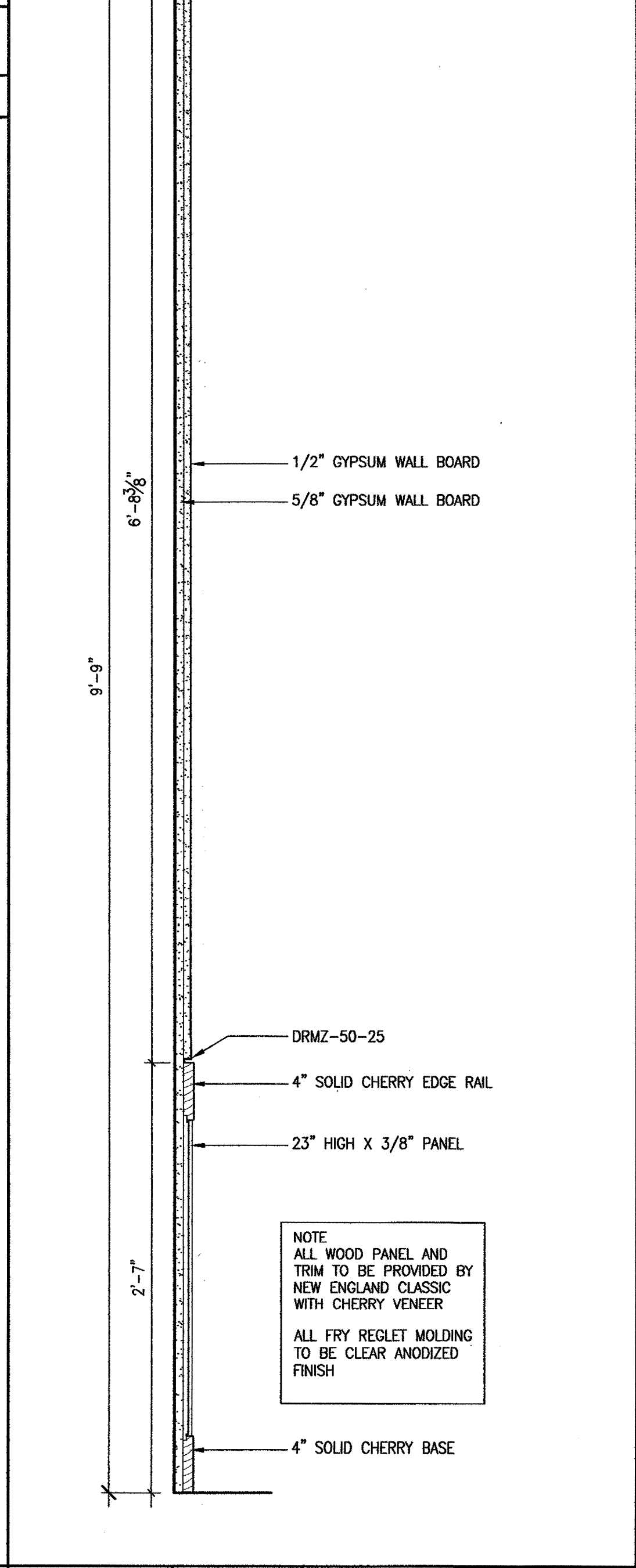
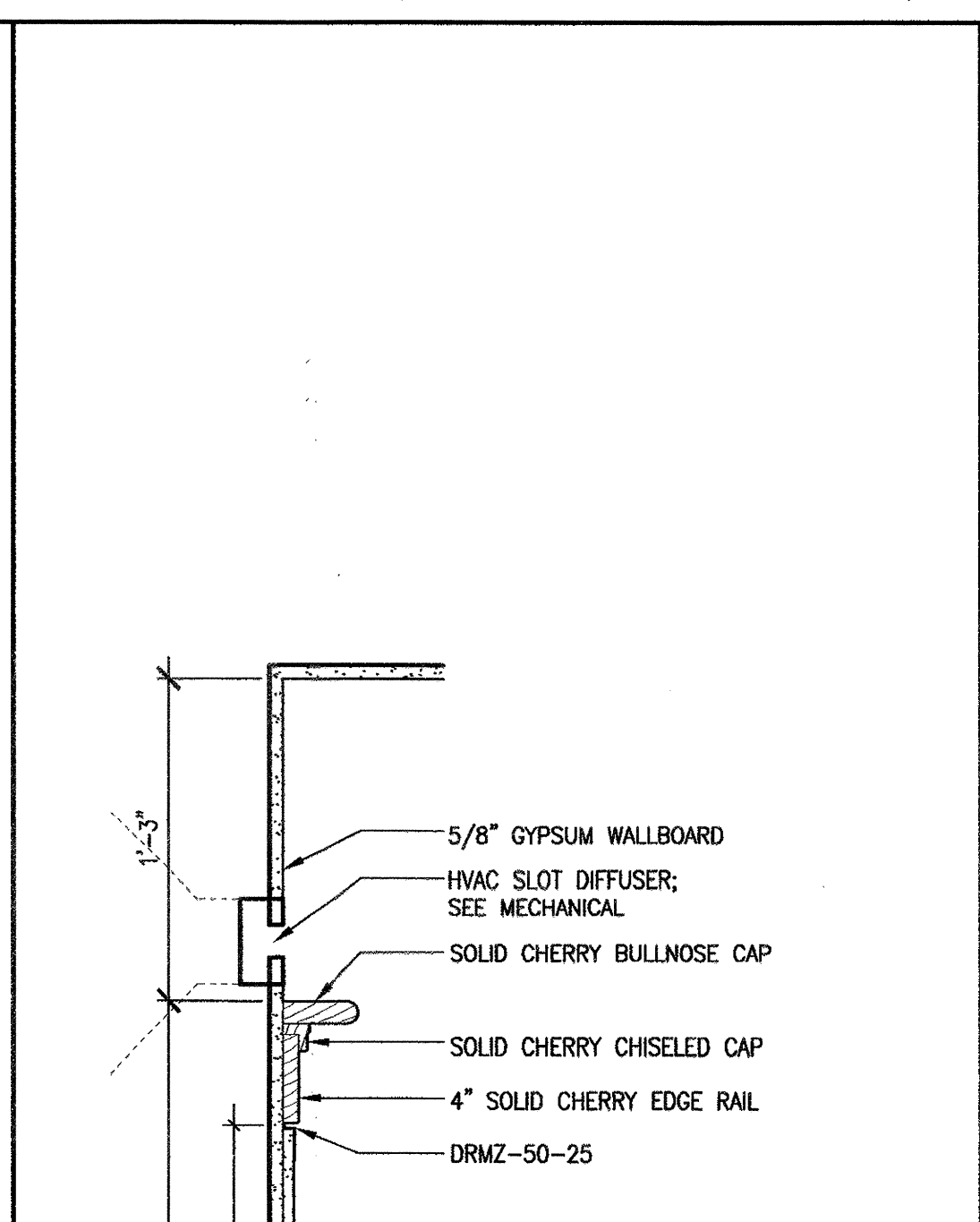
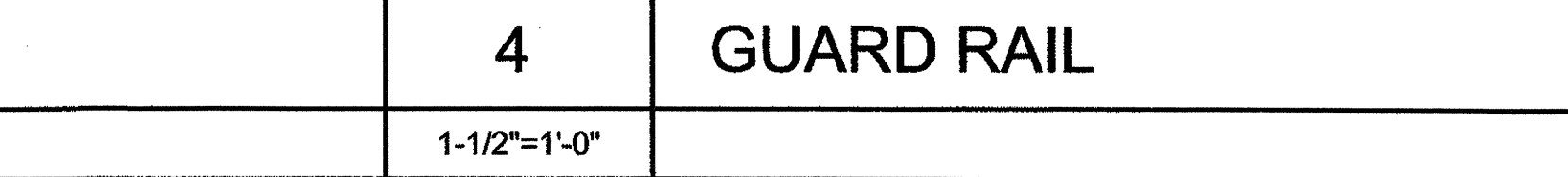
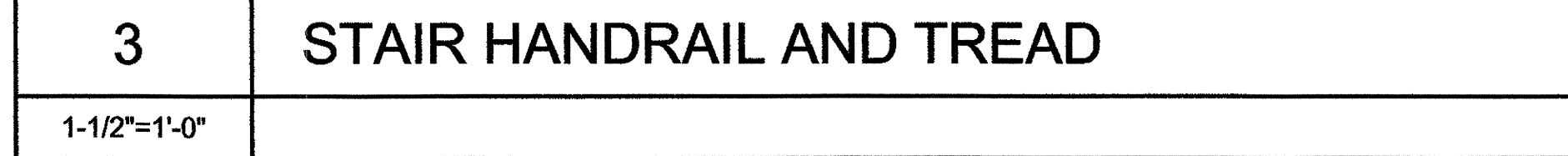
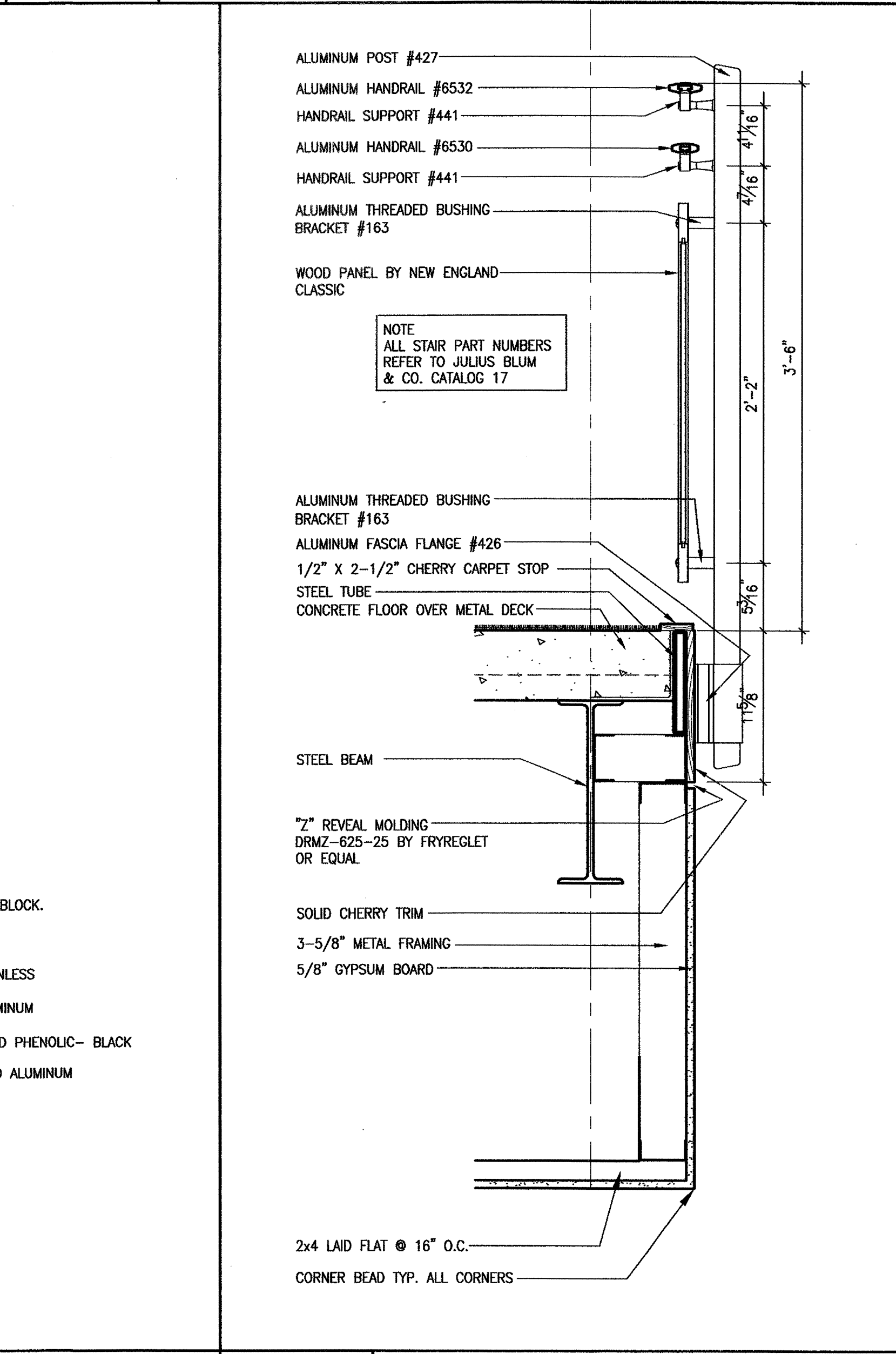
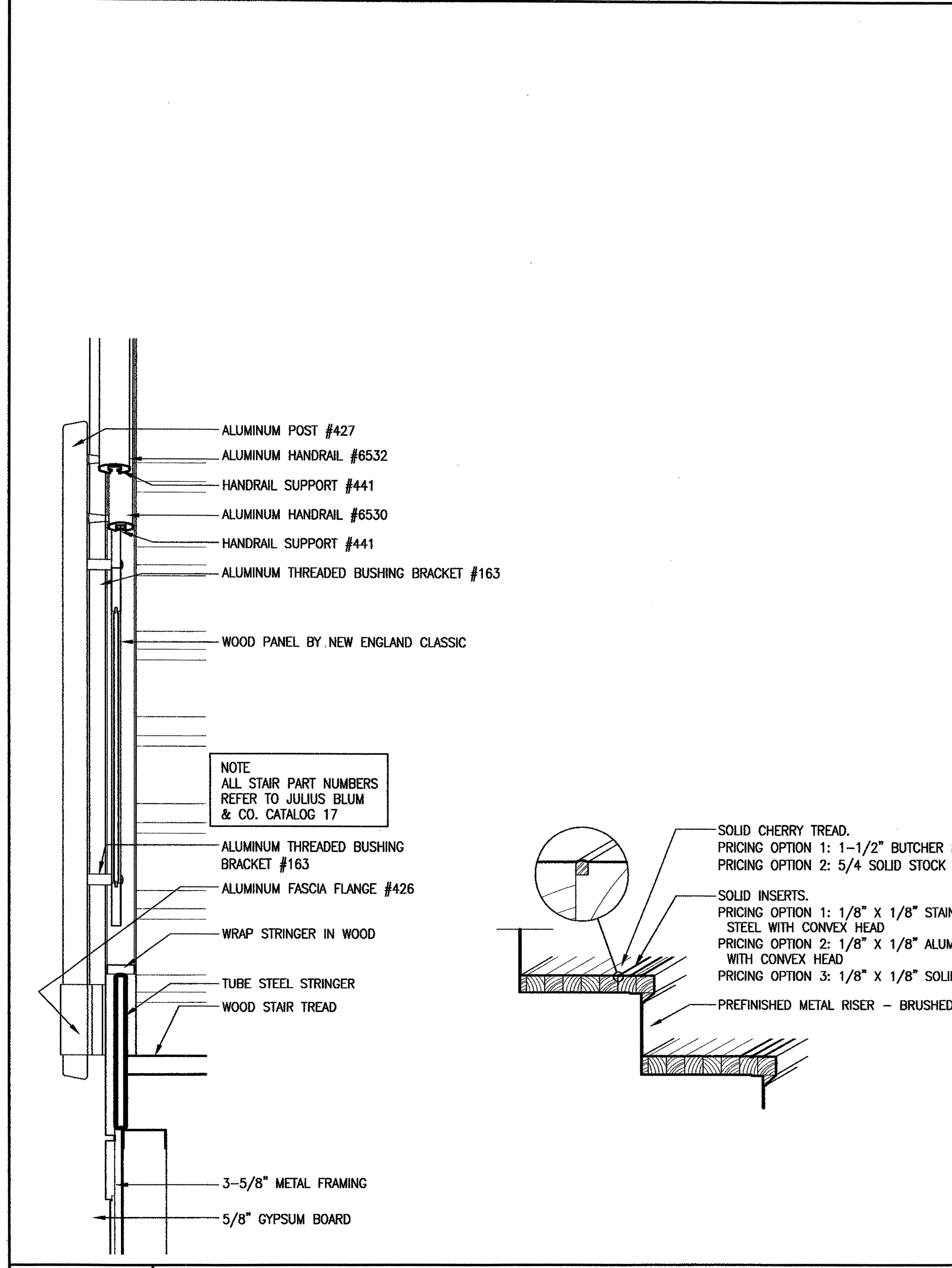
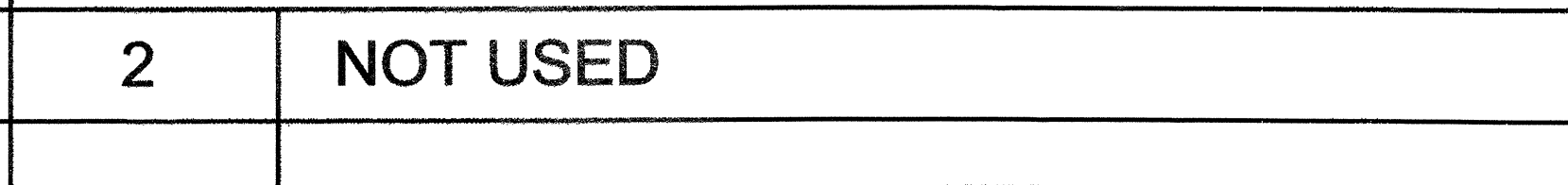
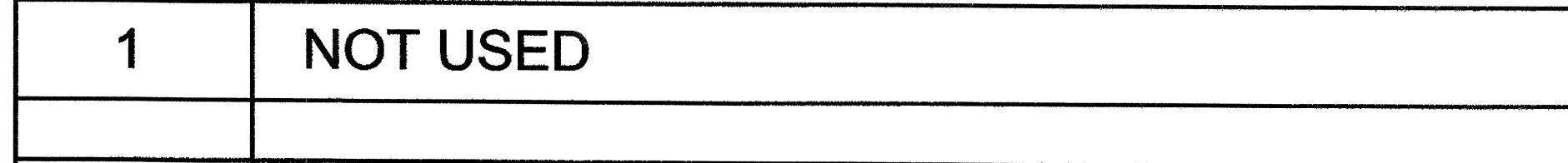
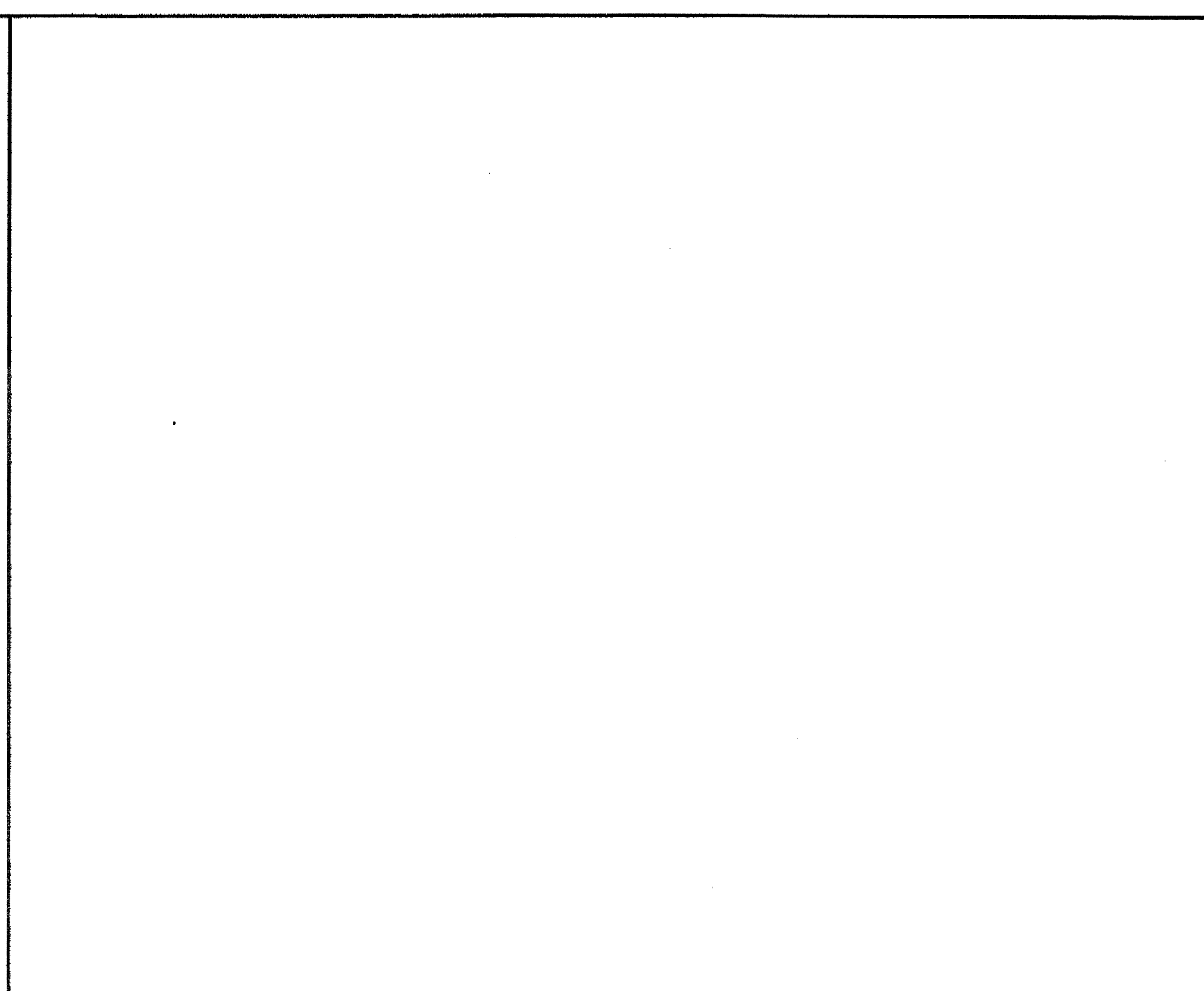
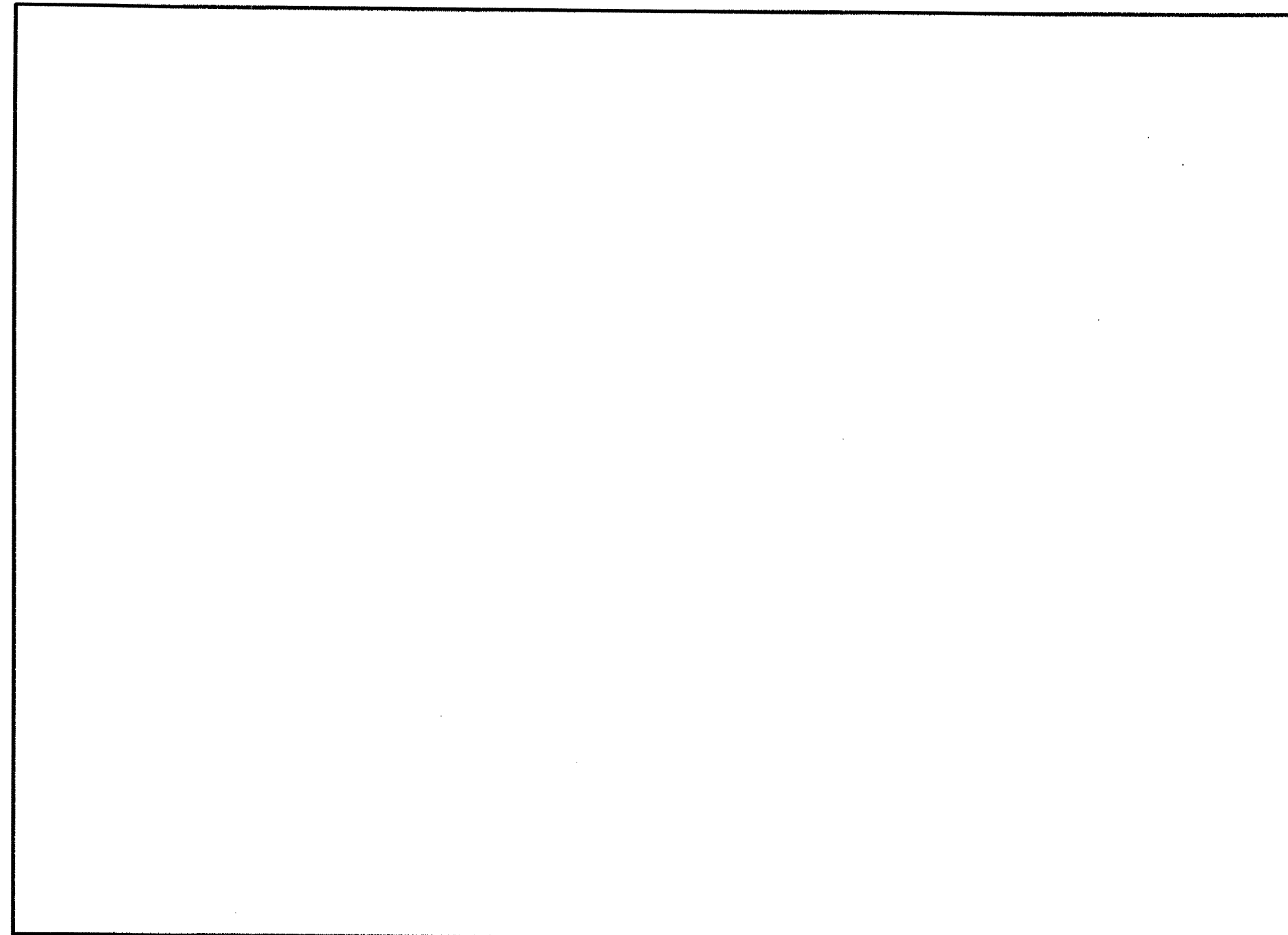


This drawing is the property of McKellar & Associates. Unauthorized use of any kind, including on other projects, is prohibited. April 26, 2006.



McKELLAR & ASSOCIATES
ARCHITECTS

Post Office Box 1076, Mt Pleasant, SC 29465
Phone 843/884.9085 Fax 843/884.9058

NO REVISION DATE

OFFICES AT BELLE HALL

LONG POINT ROAD
MT. PLEASANT, SC

INTERIOR DETAILS

A703

DESIGNED	CLS/JLC	SHEET	OF
DRAWN	DJ/JLC	SCALE	AS NOTED
REVIEWED	AWJ	PROJECT NO	200548.10
CHECKED	AMM	DATE	1.6.06

FOR CONSTRUCTION

Drawing name: P:\2005 Proj\020548.10 - Belle Hall Offices\A703\A703.dwg Apr 26, 2006 - 11:38am