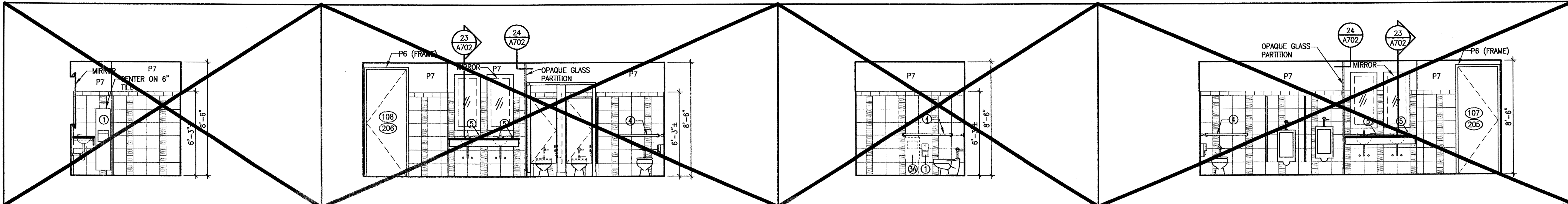
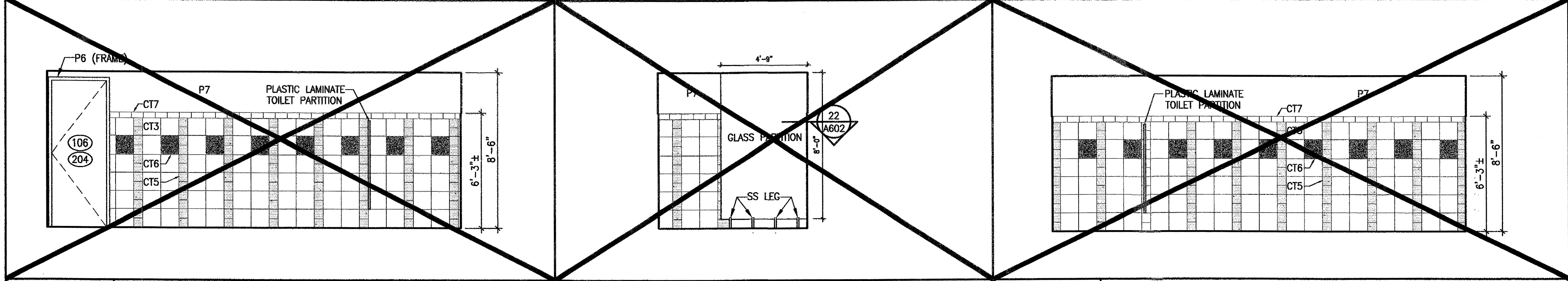


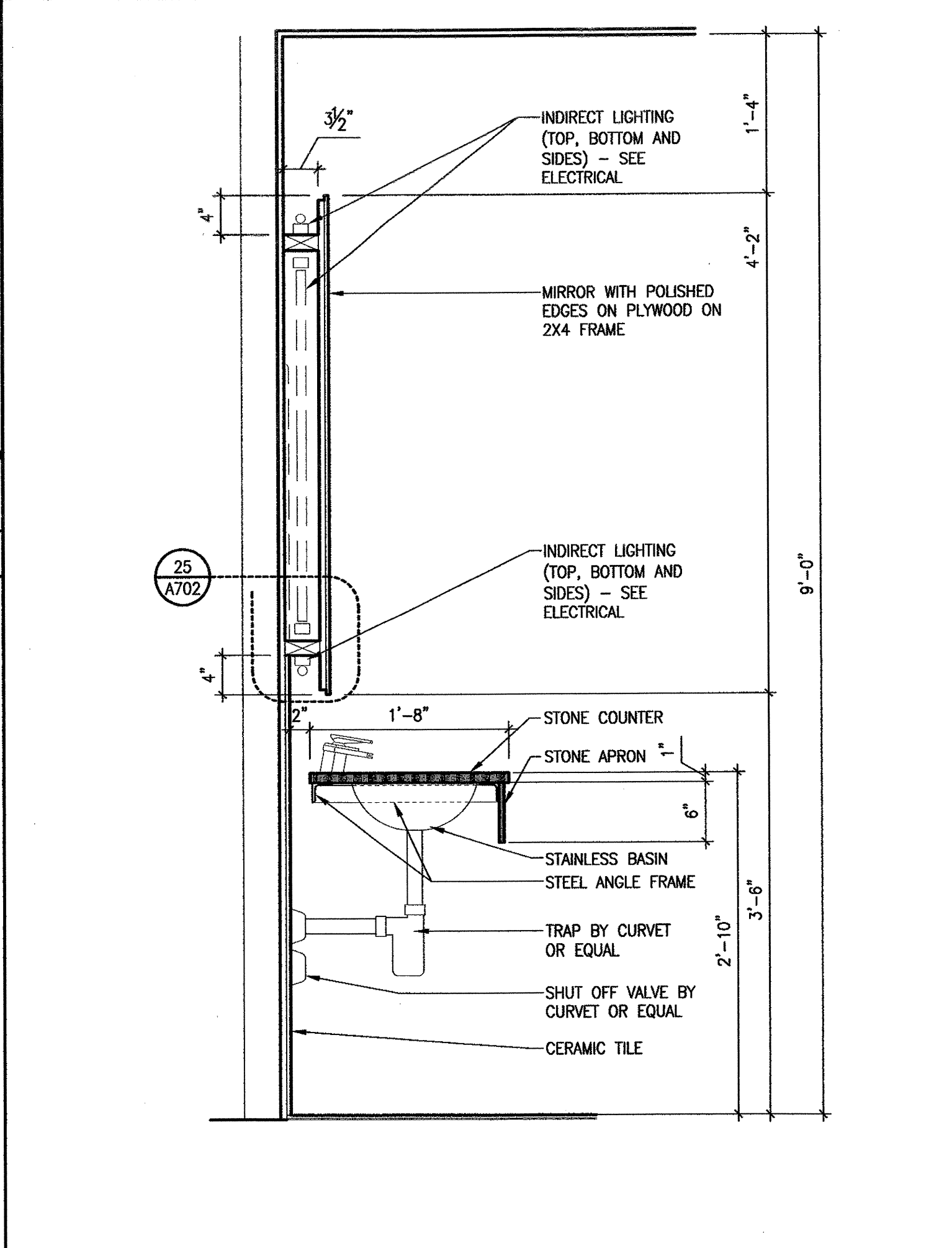
This drawing is the property of McKellar & Associates. Unauthorized use of any kind, including on other projects, is prohibited. April 26, 2006.



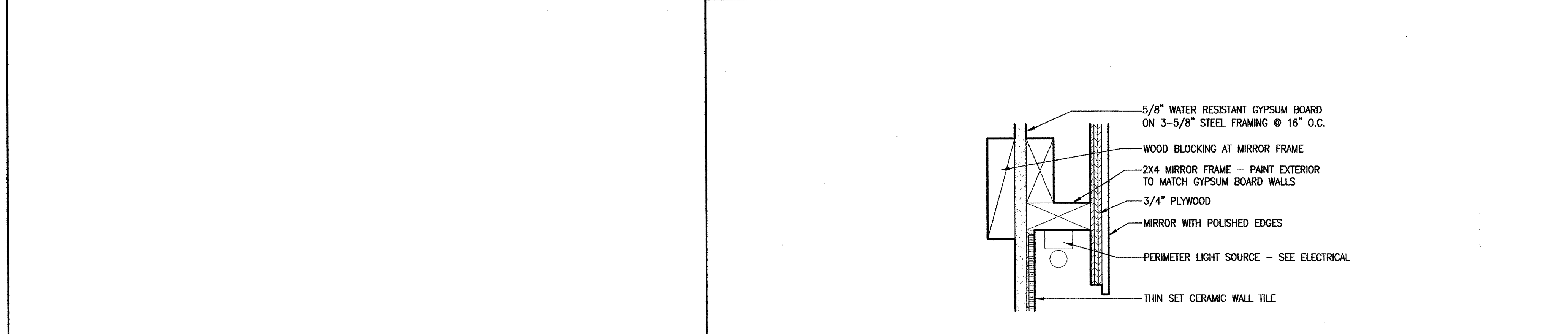
15	MEN 107, 205/WN 108, 206	16	WOMEN 108, 206	17	MEN 107, 205/WN 108, 206	18	MEN 107, 205
1/4"=1'-0"	INTERIOR ELEVATION	1/4"=1'-0"	INTERIOR ELEVATION	1/4"=1'-0"	REAR ELEVATION	1/4"=1'-0"	INTERIOR ELEVATION



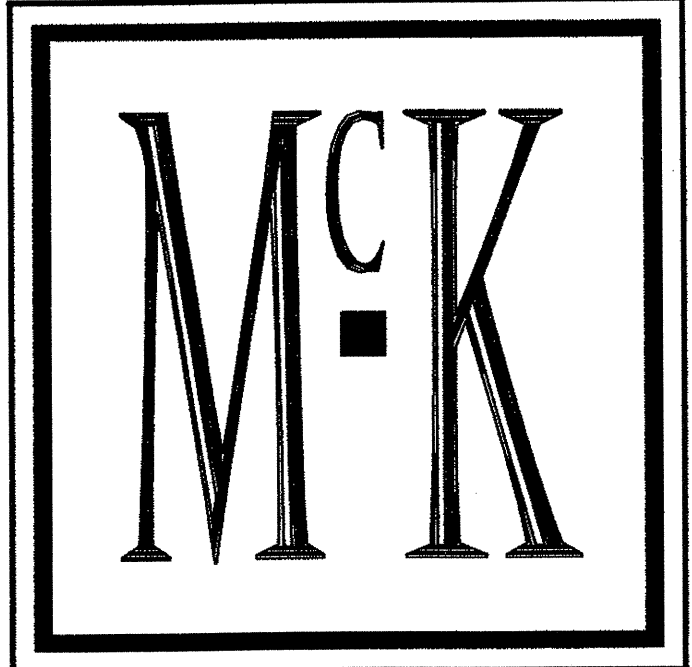
19	MEN 107, 205	20	MEN 107, 205/WN 108, 206	21	WOMEN 108, 206
1/4"=1'-0"	INTERIOR ELEVATION	1/4"=1'-0"	INTERIOR ELEVATION	1/4"=1'-0"	INTERIOR ELEVATION



22	NOT USED	23	SECTION AT LAVATORY
		1"=1'-0"	



24	NOT USED	25	MIRROR DETAIL	26	NOT USED
		3"=1'-0"			



McKELLAR & ASSOCIATES
ARCHITECTS

Post Office Box 1076, Mt Pleasant, SC 29465
Phone 843/884.9085 Fax 843/884.9058

1	REVISION 1	04.17.06
NO	REVISION	DATE

OFFICES AT BELLE HALL

LONG POINT ROAD
MT. PLEASANT, SC

INTERIOR ELEVATIONS

A702

DESIGNED	CLS/JLC	SHEET	OF
DRAWN	DL/JLC	SCALE	1/4"=1'-0"
REVIEWED	AWJ	PROJECT NO	200548.10
CHECKED	AMM	DATE	1.6.06

FOR CONSTRUCTION

Drawing name: P:\2005\Project200548.10 - Southwestern - Belle Hall Offices\A702\A702.dwg Apr 26, 2006 11:50am