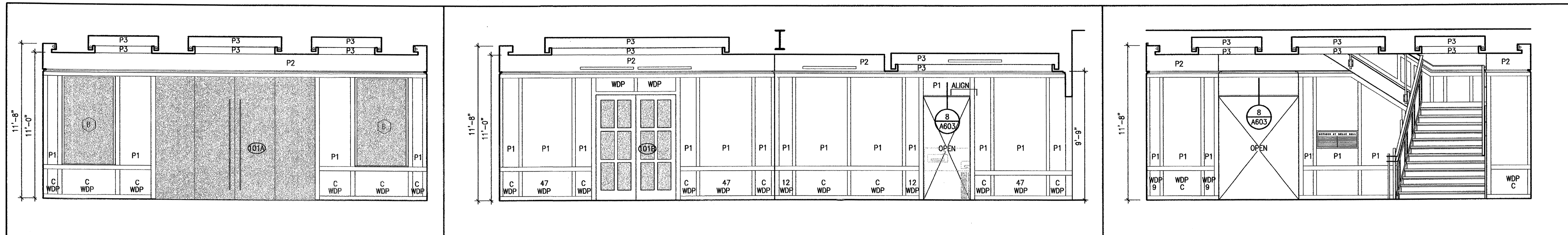
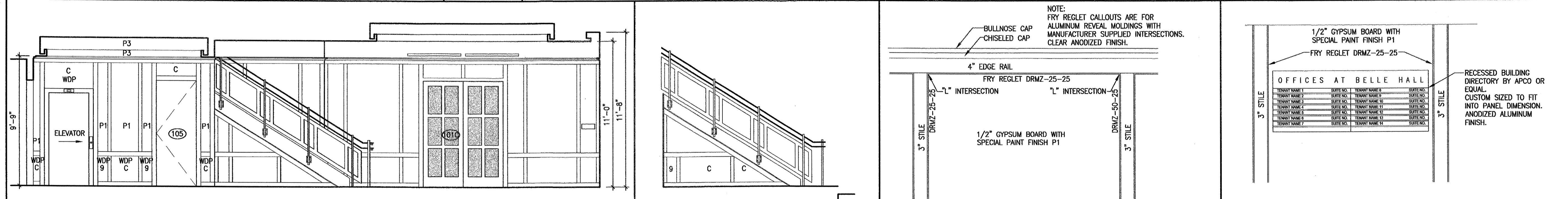


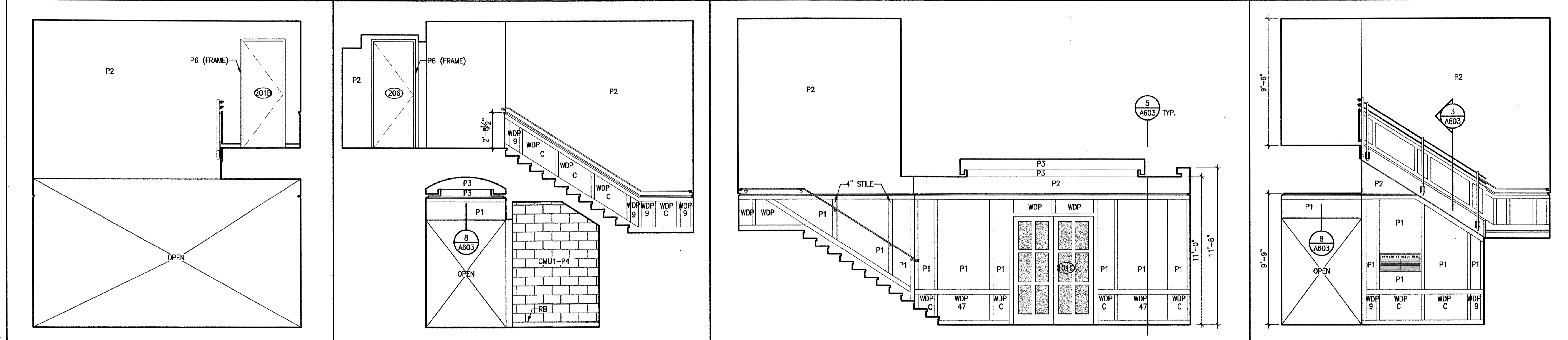
This drawing is the property of McKellar & Associates. Unauthorized use of any kind, including on other projects, is prohibited. April 26, 2006



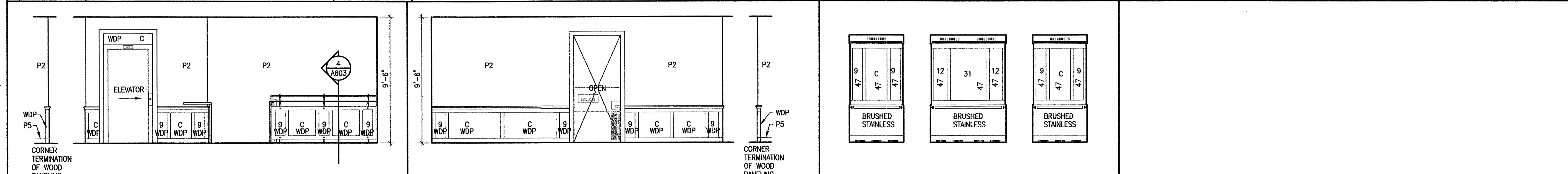
1	LOBBY 101	2	LOBBY 101	3	LOBBY 101
1/4"=1'-0"	INTERIOR ELEVATION	1/4"=1'-0"	INTERIOR ELEVATION	1/4"=1'-0"	INTERIOR ELEVATION



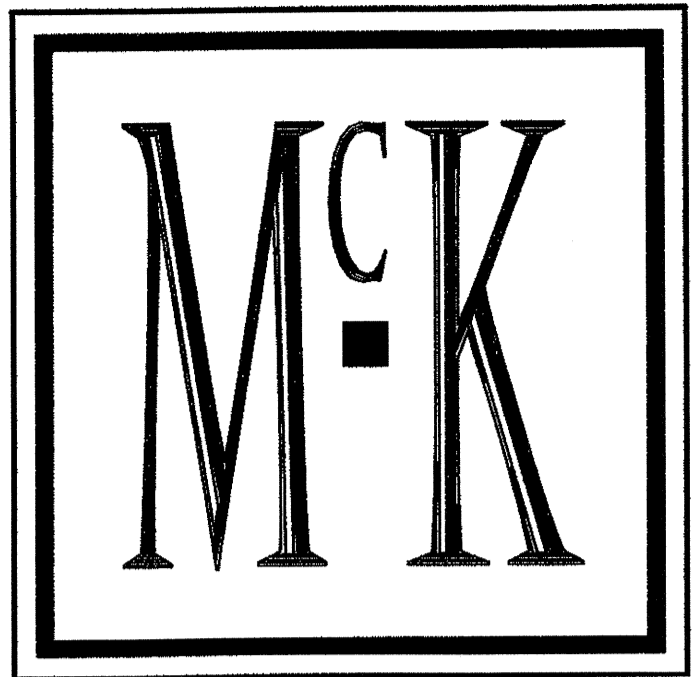
4	LOBBY 101	5	LOBBY 101	6	PANELING DETAIL	6A	DIRECTORY DETAIL
1/4"=1'-0"	REAR ELEVATION	1/4"=1'-0"	INTERIOR ELEVATION	1/2"=1'-0"	INTERIOR ELEVATION	1/2"=1'-0"	INTERIOR ELEVATION



7	LOBBY 101/201	8	LOBBY 101/201	9	LOBBY 101/201	10	LOBBY 101/201
1/4"=1'-0"	INTERIOR ELEVATION	1/4"=1'-0"	INTERIOR ELEVATION	1/4"=1'-0"	INTERIOR ELEVATION	1/4"=1'-0"	INTERIOR ELEVATION



11	LOBBY 201	12	LOBBY 201	13	ELEV 111	14	NOT USED
1/4"=1'-0"	SIDE ELEVATION	1/4"=1'-0"	SIDE ELEVATION	1/4"=1'-0"		1/4"=1'-0"	



McKELLAR & ASSOCIATES
ARCHITECTS

Post Office Box 1076, Mt Pleasant, SC 29465
Phone 843/884.9085 Fax 843/884.9058

NO REVISION DATE

OFFICES AT BELLE HALL

LONG POINT ROAD
MT. PLEASANT, SC

INTERIOR ELEVATIONS

A701

DESIGNED	CLS/JLC	SHEET	OF
DRAWN	DLJ/LC	SCALE	1/4"=1'-0"
REVIEWED	AWJ	PROJECT NO	200548.10
CHECKED	AMM	DATE	1.6.06

FOR CONSTRUCTION

Drawing name: P:\2005\Project\200548.10 - Southwestern - Belle Hall Offices\A701\A701.dwg Apr 26, 2006 - 11:58am