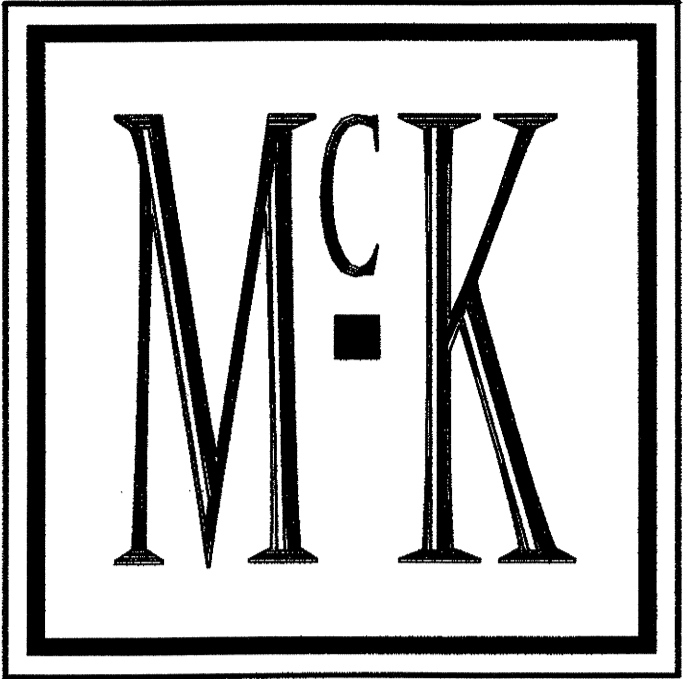


This drawing is the property of McKellar & Associates. Unauthorized use of any kind, including on other projects, is prohibited. April 26, 2006



**McKELLAR &  
ASSOCIATES**  
ARCHITECTS

Post Office Box 1076, Mt Pleasant, SC 29465  
Phone 843/884.9085 Fax 843/884.9058

NO REVISION DATE

**OFFICES  
AT  
BELLE  
HALL**

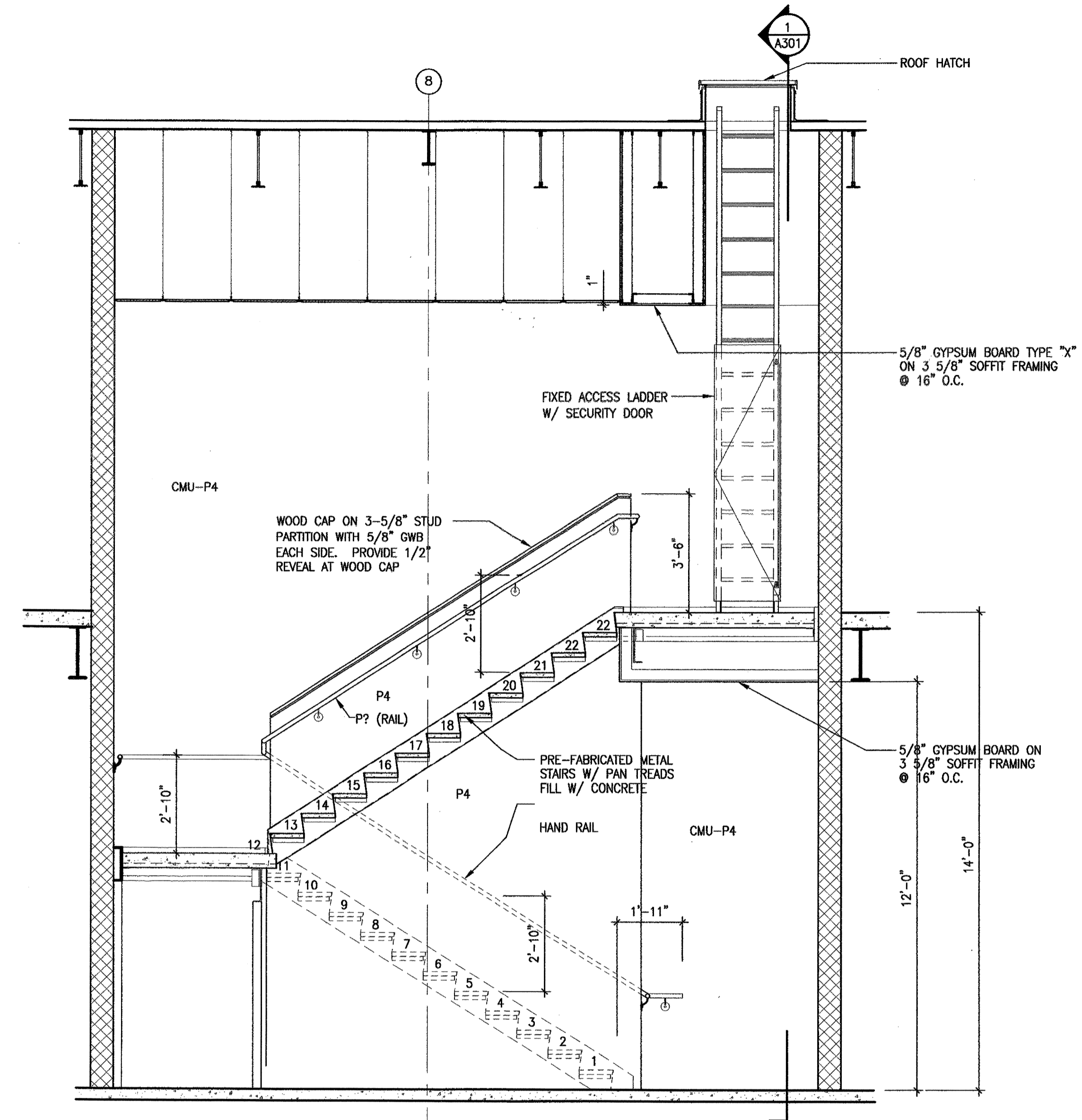
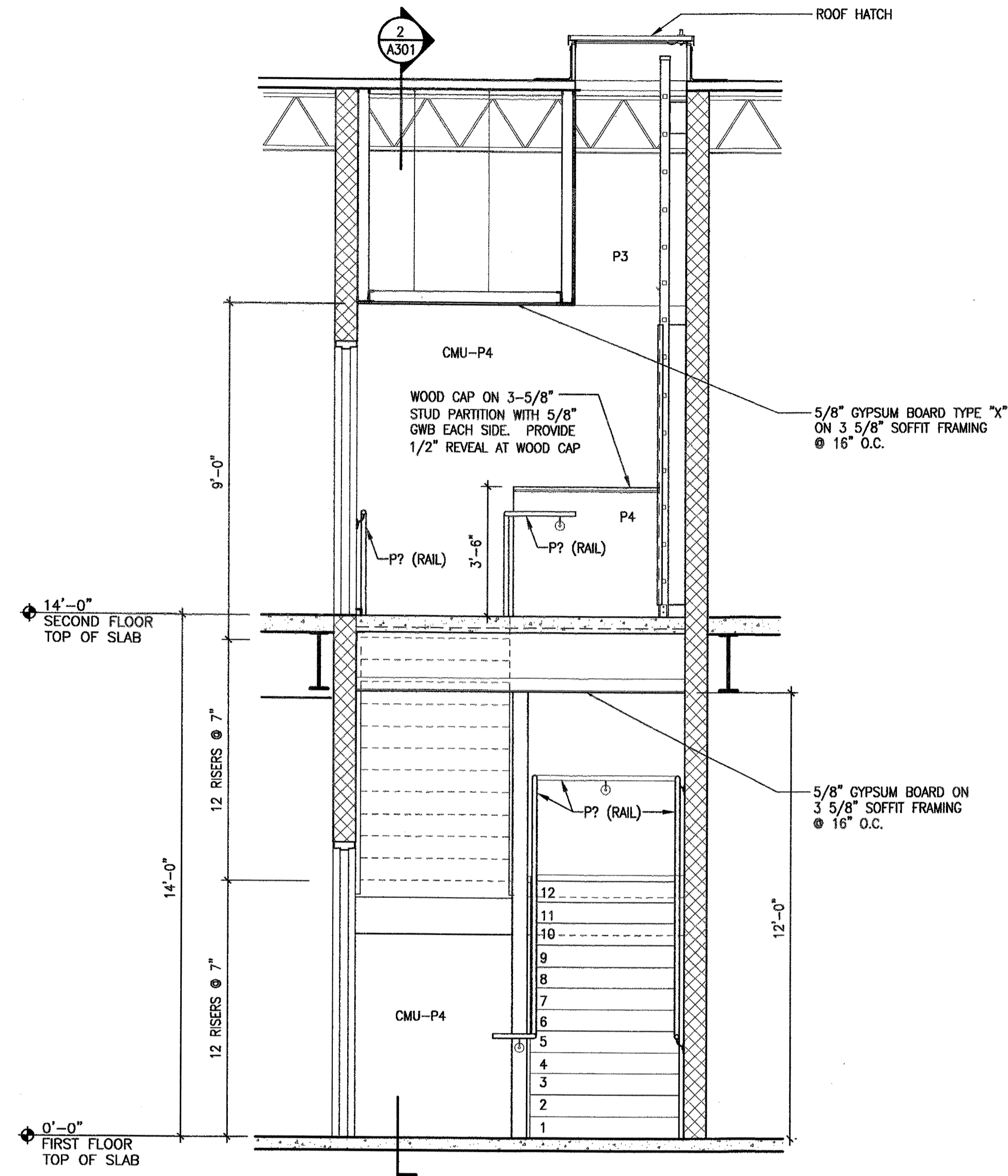
LONG POINT ROAD  
MT. PLEASANT, SC

BUILDINGS 1 & 2  
STAIR PLANS,  
SECTIONS AND ELEVATIONS

**A301**

DESIGNED	CLS/ALC	SHEET	OF
DRAWN	DL/ALC	SCALE	1/4"=1'-0"
REVIEWED	AWJ	PROJECT NO	200548.10
CHECKED	AMM	DATE	1.6.06

FOR CONSTRUCTION

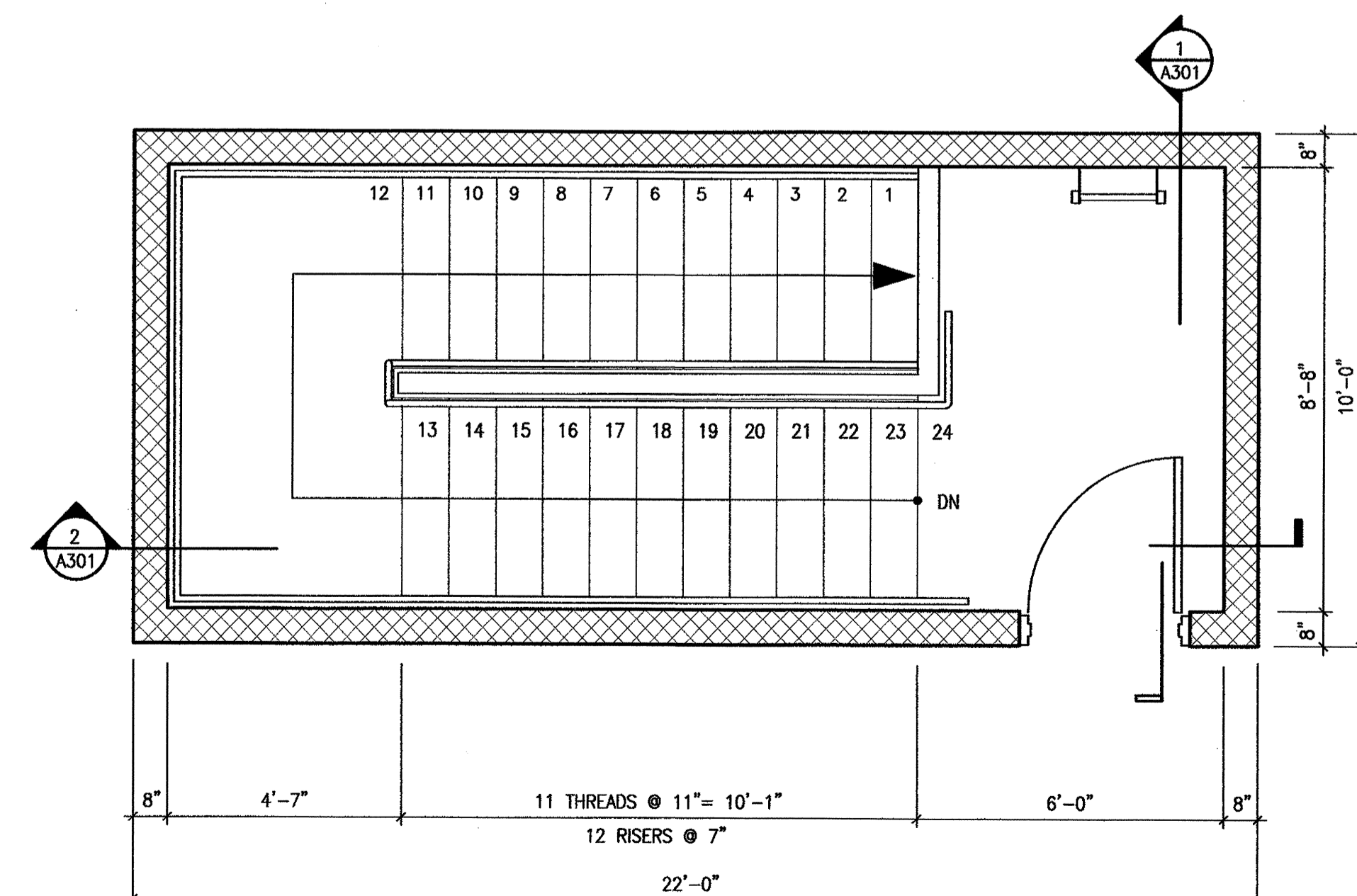
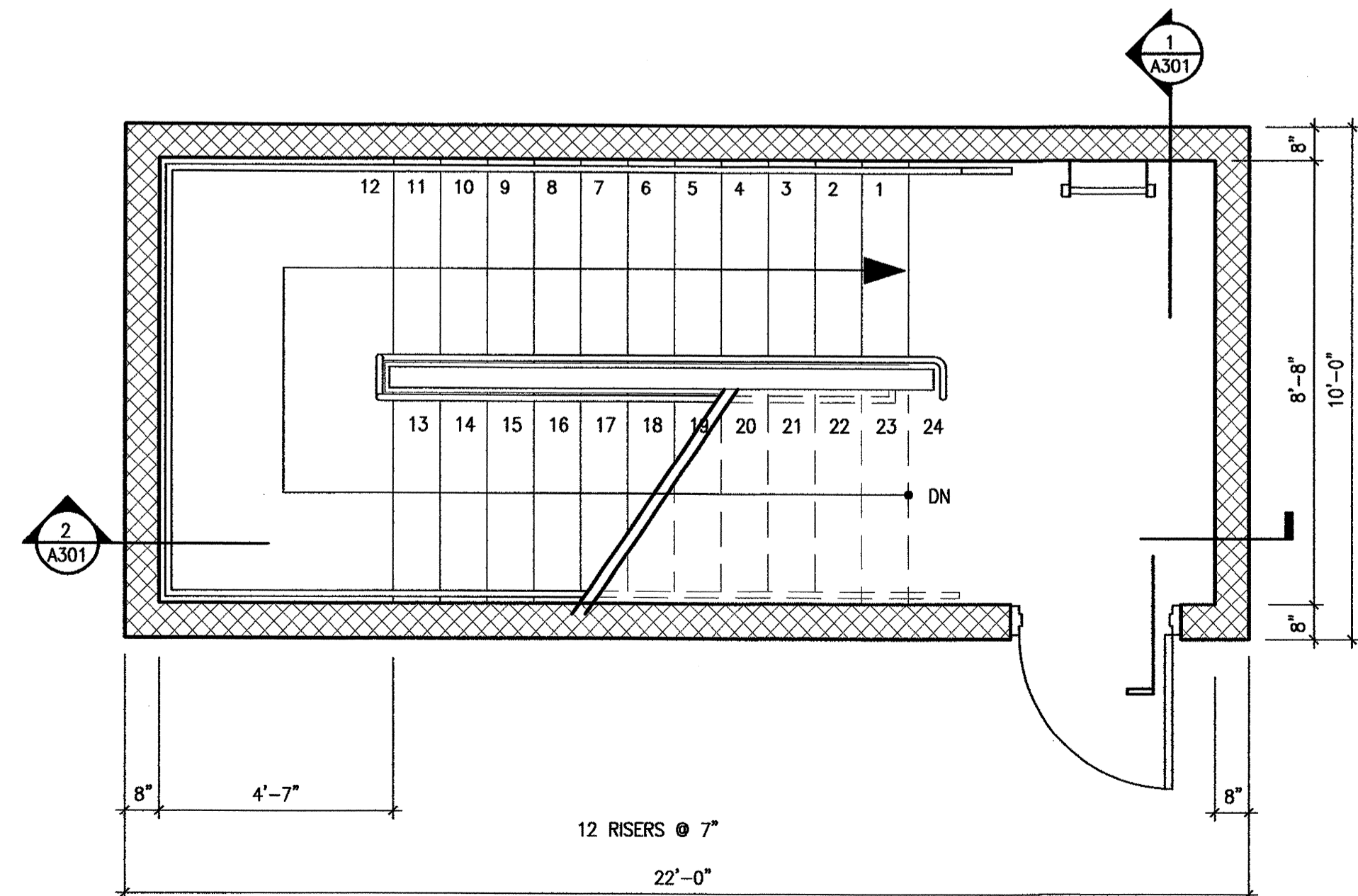


**1 STAIR B SECTION (STAIR A OPPOSITE HAND)**

**2 STAIR B SECTION (STAIR A OPPOSITE HAND)**

3/8"=1'-0" ROOF HATCH IN STAIR B ONLY

3/8"=1'-0" ROOF HATCH IN STAIR B ONLY



**3 STAIR B ENLARGED FIRST FLOOR PLAN**

**4 STAIR B ENLARGED SECOND FLOOR PLAN**

3/8"=1'-0" STAIR A - OPPOSITE HAND

3/8"=1'-0" STAIR A - OPPOSITE HAND WITHOUT LADDER / ROOF HATCH

Drawing name: P:\2006 Project\2006.10 - Staircases - Belle Hall Offices\MCK\A301-A302.dwg Apr 26, 2006 - 11:46am