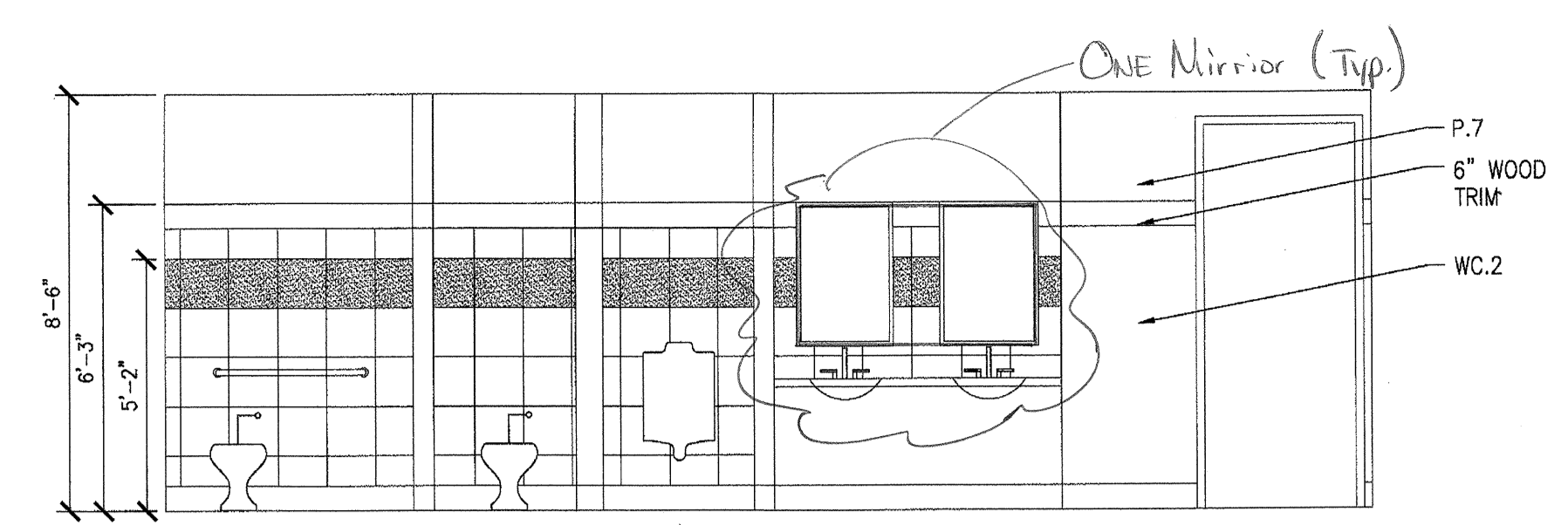


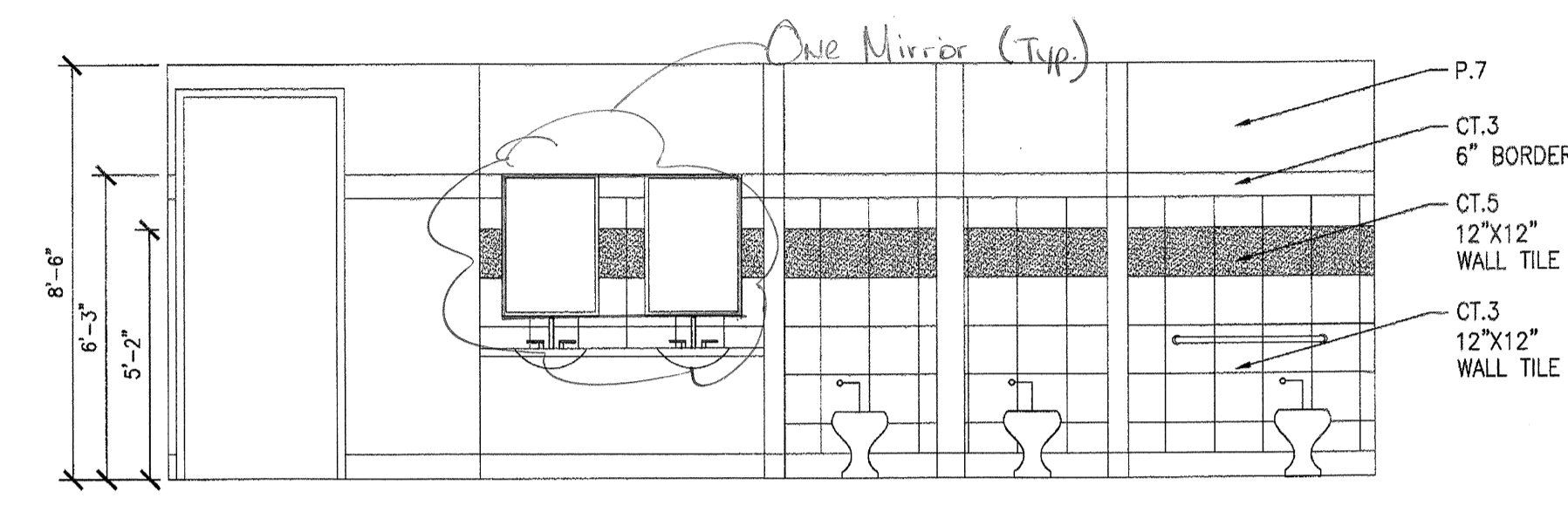
ISSUE HISTORY		
NO.	DATE	DESCRIPTION

THESE DRAWINGS REMAIN THE PROPERTY OF K.O.H.L. GRAMIGNA MONARDO ARCHITECTS, P.C. ALL RIGHTS RESERVED. THESE DRAWINGS MAY BE USED ONLY FOR THE PROJECT SPECIFICALLY REFERRED TO HEREIN. THEY MAY NOT BE USED, IN WHOLE OR IN PART, ON OTHER PROJECTS WITHOUT THE WRITTEN AGREEMENT OF THE PROJECT OWNER BY EXPRESS WRITTEN AGREEMENT.

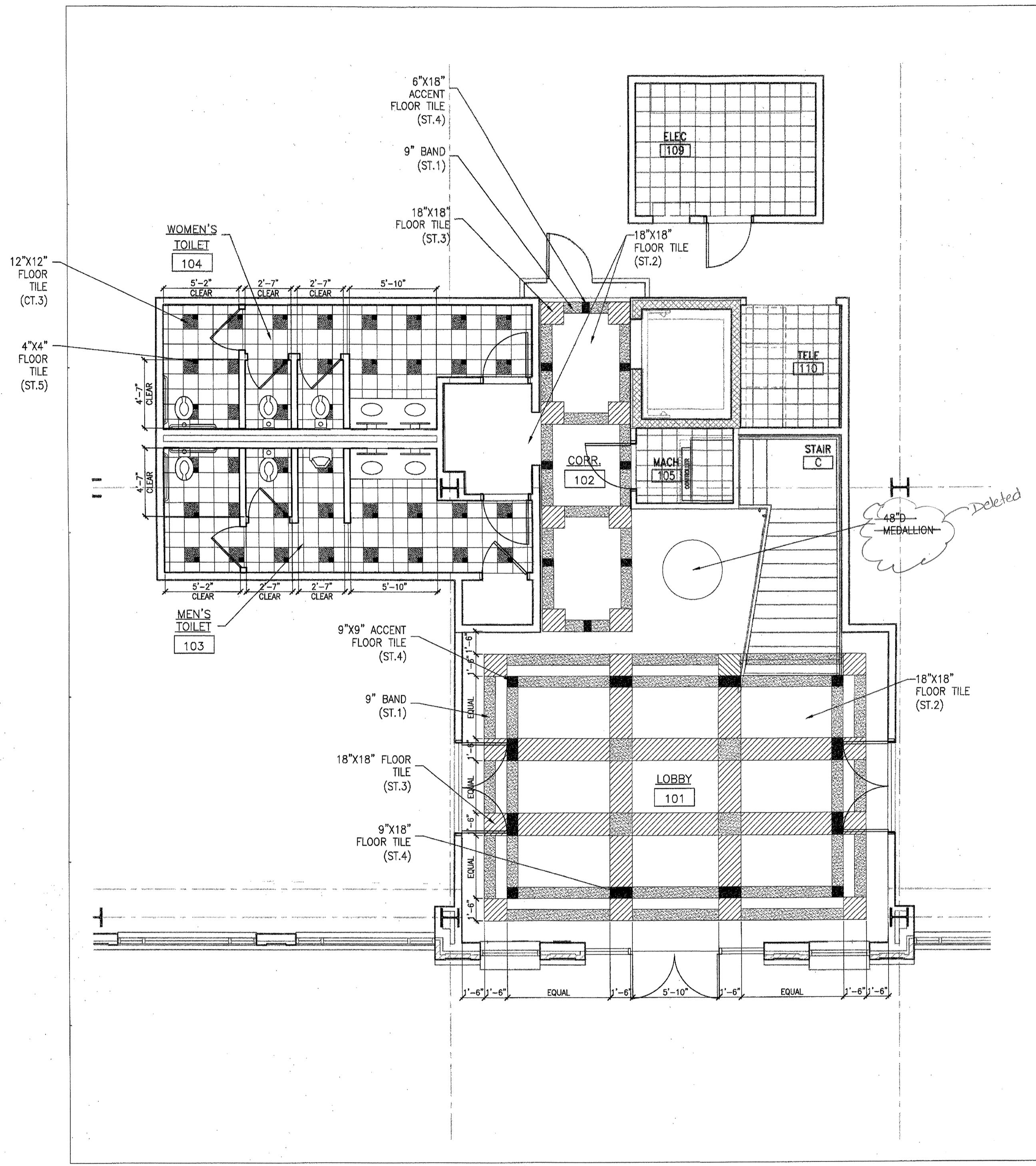
REVISIONS		
NO.	DATE	DESCRIPTION



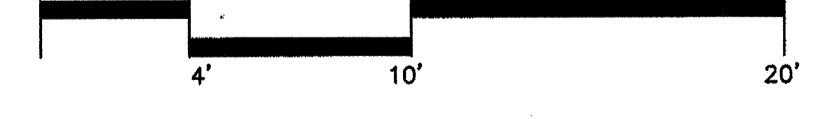
2 MEN'S TOILET ELEVATIONS  
A1.05 SCALE: 3/8" = 1'-0"



3 WOMEN'S TOILET ELEVATIONS  
A1.05 SCALE: 3/8" = 1'-0"



1 ENLARGED FIRST FLOOR- FLOOR PATTERN  
A1.05 SCALE: 1/4" = 1'-0"



NO.	ROOM	FLOOR	BASE	WALLS				DOOR	DOOR FRAME	CEILING	CLG HGT	NOTES
				NORTH	EAST	SOUTH	WEST					
101	LOBBY	ST.4	WD1	GWB-W4/WDP/GWB-P2	GWB-W4/WDP/GWB-P2	GWB-W4/WDP/GWB-P2	GWB-W4/WDP/GWB-P2	GLASS	WD	GWB-P3	VARIABLES	SEE SHEETS A106 AND A601
105	ELEV. MACH. ROOM	CONC1	RB	GWB-P4	GWB-P4	CONC2/GWB-P4	GWB-P4	WD	WD	GWB-P4	VARIABLES	
106	JANITOR	CONC1	RB	CT3,4/GWB-P4	CT3,4/GWB-P4	CONC2/GWB-P4	CT3,4/GWB-P4	HM-P4	HM-P4	GWB-P4	8'-6"	
107	MEN	CT3,4	CT3,5	CT3,5,6/GWB-P7	CT3,5,6/GWB-P7	CT3,5,6/GWB-P7	CT3,5,6/GWB-P7	WD	HM-P6	GWB-P7	8'-6"	SEE SHEETS A106 AND A602
108	WOMEN	CT3,4	CT3,5	CT3,5,6/GWB-P7	CT3,5,6/GWB-P7	CT3,5,6/GWB-P7	CT3,5,6/GWB-P7	WD	HM-P6	GWB-P7	8'-6"	SEE SHEETS A106 AND A602
109	ELECTRIC	CONC1	RB	GWB-P4	GWB-P4	GWB-P4	GWB-P4	WD	HM-P6	NONE	N/A	
110	TELECOM	CONC1	RB	GWB-P4	GWB-P4	GWB-P4	GWB-P4	WD	HM-P6	NONE	N/A	
111/208	ELEVATOR	CT1,2	N/A	WDP/PLAM	WDP/PLAM	WDP/PLAM	WDP	-	-	-	-	SEE SHEET A106 FOR TILE CALL OUTS/SEE ELEVATOR SPECS
112	CORRIDOR	CT1,2	WD2	GWB-P1/WD	GWB-P1/WD	GWB-P1/WD	GWB-P1/WD	WD	HM-P6	GWB-P3	VARIABLES	SEE SHEET A106 FOR TILE CALL OUTS
113	VESTIBULE	CT1,2	WD1	GWB-P2	GWB-P2	GWB-P2	GWB-P2	WD	HM-P6	GWB-P3	8'-6"	
114	RISER ROOM	CONC1	RB	GWB-P4	GWB-P4	GWB-P4	GWB-P4	HM-P8	HM-P8	NONE	N/A	
201	SECOND FLOOR LOBBY	CPT	WD1	WDP/GWB-P2	WDP/GWB-P2	WDP/GWB-P2	WDP/GWB-P2	-	-	GWB-P3	9'-6"	SEE SHEETS A601
204	JANITOR	CONC1	RB	CT3,4/GWB-P4	CT3,4/GWB-P4	CT3,4/GWB-P4	CT3,4/GWB-P4	HM-P4	HM-P4	GWB-P4	8'-6"	
205	MEN	CT3,4	CT3,5	CT3,5,6/GWB-P4	CT3,5,6/GWB-P4	CT3,5,6/GWB-P4	CT3,5,6/GWB-P4	WD	HM-P6	GWB-P3	8'-6"	SEE SHEETS A106 AND A602
206	WOMEN	CT3,4	CT3,5	CT3,5,6/GWB-P4	CT3,5,6/GWB-P4	CT3,5,6/GWB-P4	CT3,5,6/GWB-P4	WD	HM-P6	GWB-P3	8'-6"	SEE SHEETS A106 AND A602
207	TELECOM	CONC1	RB	GWB-P4	GWB-P4	GWB-P4	GWB-P4	WD	HM-P6	NONE	N/A	
209	VESTIBULE	CPT	WD1	GWB-P2	GWB-P2	GWB-P2	GWB-P2	-	HM-P6	GWB-P3	8'-6"	
A	STAIR	CONC1	RB	CMU1/GWB-P8	CMU1/GWB-P8	CMU1/GWB-P8	CMU1/GWB-P8	WD	HM-P6	GWB-P3	VARIABLES	CPT NOT TO BE INSTALLED FOR SHELL CONSTRUCTION
B	STAIR	CONC1	RB	CMU1/GWB-P8	CMU1/GWB-P8	CMU1/GWB-P8	CMU1/GWB-P8	WD	HM-P6	GWB-P3	VARIABLES	CPT NOT TO BE INSTALLED FOR SHELL CONSTRUCTION

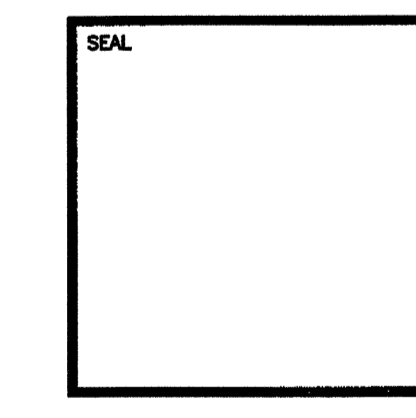
FINISH NOTES  
INTERIOR

FLOOR	BASE	WALL	CEILING	MISCELLANEOUS
CONC1 CONCRETE FLOOR WITH CLEAR SEALER	WD1 WOOD BASE PAINTED PB	WD1 WOOD BASE 1" EASED EDGE CHERRY VENEER	GWB GYPSUM BOARD WITH PAINT FINISH	
CPT CARPET, DESIGN WEAWE; 26398-80796 "CULTURAL CORRIDOR" "DRIVE"	WD2 WOOD BASE PAINTED PB	WD2 WOOD BASE PAINTED PB	ACT ACOUSTIC CEILING TILE; 24"x24"	
411 18" x 18" MARBLE TILE; G&L MARBLE INC. PARADOX 157-TLM	WB RUBBER BASE; JOHNSONITE 34 ALMOND	WB RUBBER BASE; JOHNSONITE 34 ALMOND	ARMSTRONG OPTIMA SQUARE REGULAR W/ 3/16" EXPOSED TEE GRID	
412 18" x 18" MARBLE TILE; G&L MARBLE INC. HARBOR 21-TLM	WB GYPSUM WALL BOARD WITH PAINT FINISH	WB GYPSUM WALL BOARD WITH PAINT FINISH		PL1 PLASTIC LAMINATE; NEWMAR 50014T "BLACK PEARL"
413 18" x 18" MARBLE TILE; G&L MARBLE INC. NEW ST. LAURENT-TLM	P2 SHERWIN WILLIAMS PAINT; SW 6100 "KILIM BEIGE"	P2 SHERWIN WILLIAMS PAINT; SW 6100 "KILIM BEIGE"		PL2 PLASTIC LAMINATE; NEWMAR OR EQUAL FOR ELEVATOR - TYP.
514 18" x 18" MARBLE TILE; G&L MARBLE INC. ROAD ALICANTE-TLM	P3 SHERWIN WILLIAMS PAINT; SW 1004 "PURE WHITE"	P3 SHERWIN WILLIAMS PAINT; SW 1004 "PURE WHITE"		
FM RECESSED FLOOR MAT; REESE MODEL #551 ALUMINUM MULTI-PURPOSE FRAME; COLOR: BLACK ALUMINUM FRAME W/ BLACK VINYL TREAD	P4 SHERWIN WILLIAMS PAINT; SW 8899 "DIVERSE BEIGE"	P4 SHERWIN WILLIAMS PAINT; SW 8899 "DIVERSE BEIGE"		
	P5 SHERWIN WILLIAMS PAINT; SW 6000 "FRENCH ROAST"	P5 SHERWIN WILLIAMS PAINT; SW 6000 "FRENCH ROAST"		
	P6 SHERWIN WILLIAMS PAINT; SW 2558 "TROPICAN BLACK"	P6 SHERWIN WILLIAMS PAINT; SW 2558 "TROPICAN BLACK"		
	P7 SHERWIN WILLIAMS PAINT; SW 6100 "KILIM BEIGE"	P7 SHERWIN WILLIAMS PAINT; SW 6100 "KILIM BEIGE"		
	P8 MULTISPEC WATERBORNE; #009604	P8 MULTISPEC WATERBORNE; #009604		
	CT3 12 X 12 CERAMIC TILE; CROSSVILLE AMERICAN SERIES; AV14 GRAND CANYON	CT3 12 X 12 CERAMIC TILE; CROSSVILLE AMERICAN SERIES; AV14 GRAND CANYON		
	CT5 12 X 12 CERAMIC TILE; CROSSVILLE AMERICAN SERIES; AV14 HARTICELL	CT5 12 X 12 CERAMIC TILE; CROSSVILLE AMERICAN SERIES; AV14 HARTICELL		
	P9 SHERWIN WILLIAMS PAINT; SW 7024 "SHERWIN"	P9 SHERWIN WILLIAMS PAINT; SW 7024 "SHERWIN"		
	WOP WOOD PANELING SYSTEM BY NEW ENGLAND CLASSIC; MEDIUM CHERRY VENEER, CLASS C	WOP WOOD PANELING SYSTEM BY NEW ENGLAND CLASSIC; MEDIUM CHERRY VENEER, CLASS C		
	CMU1 CONCRETE MASONRY UNIT WALL; PAINTED P4	CMU1 CONCRETE MASONRY UNIT WALL; PAINTED P4		
				LATICRETE SPURT
				G1 GROUT; 23 ANTIWATER WHITE-11 1/2" JOINT
				G2 GROUT; 17 MARBLE BEIGE (11) 1/2" JOINT
				WC1 MDO WALLCOVERING; H4050/4130 "TRENTO"
				WC2 KOROZOL WALLCOVERING; C521-EG "RANCHERO"

FINISH NOTES  
EXTERIOR

BRICK	EXTERIOR GLAZING	GLAZING
PALMETTO BRICK COMPANY; OLDE MARLBOROUGH; QUEEN SIZE	GREY TINTED	
BLOCKS METROMONT; POLISHED GROUND FACE; #308 MOUNTAIN SAND	HM DOORS AND FRAMES	PAINT TO MATCH BLOCK
MORTAR TO MATCH BLOCK COLOR	EXPOSED MISC. STEEL	PAINT TO MATCH BRICK
GL SEALANT TO MATCH CONCRETE "MORTAR" AT BRICK CORNERS	SCOPING	PREFINISHED BLACK METAL
STORAGEFRONT CLEAR ANODIZED	NOTE:	
ALUMINUM FRAME ALUMINUM - MILL FINISH	PAINT ALL EXPOSED SURFACES	
AWNING FABRIC SUNBRELLA; CHARCOAL GREY; STYLE 4644		

**OFFICES AT BELLE HALL**  
 LONG POINT ROAD  
 MT. PLEASANT, SOUTH CAROLINA  
**K O H L G R A M I G N A M O N A R D O A R C H I T E C T S , P . C .**  
 655 Engineering Drive, Suite 150, Norcross, Georgia 30092 770-448-2743 www.kgmarchitects.com



SHEET TITLE	
ENLARGED 1ST FL- FLOOR PATTERN	
PROJECT NO. 6.200.00	SHEET NUMBER A105
ISSUE DATE 1.26.06	OF 1