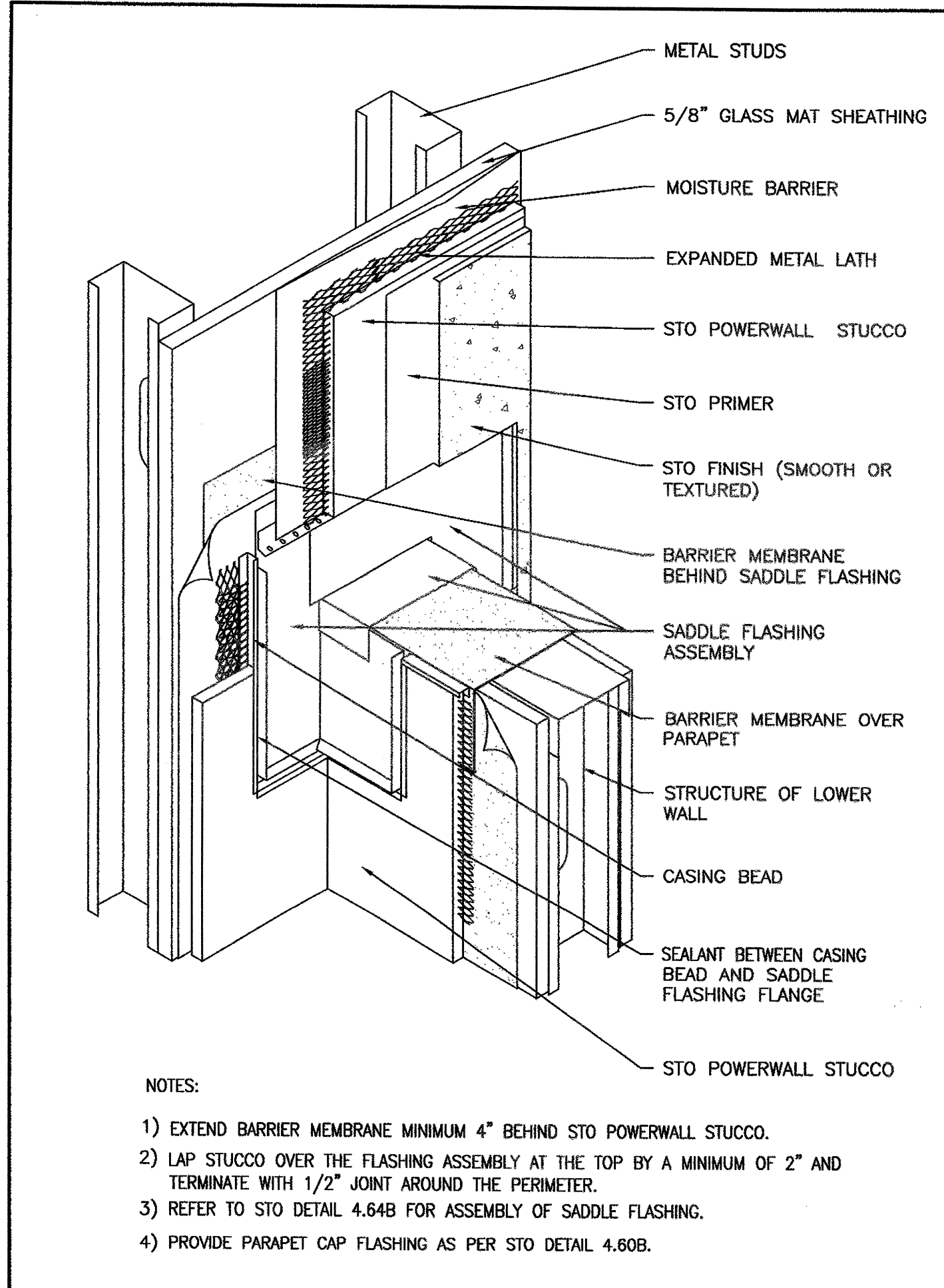
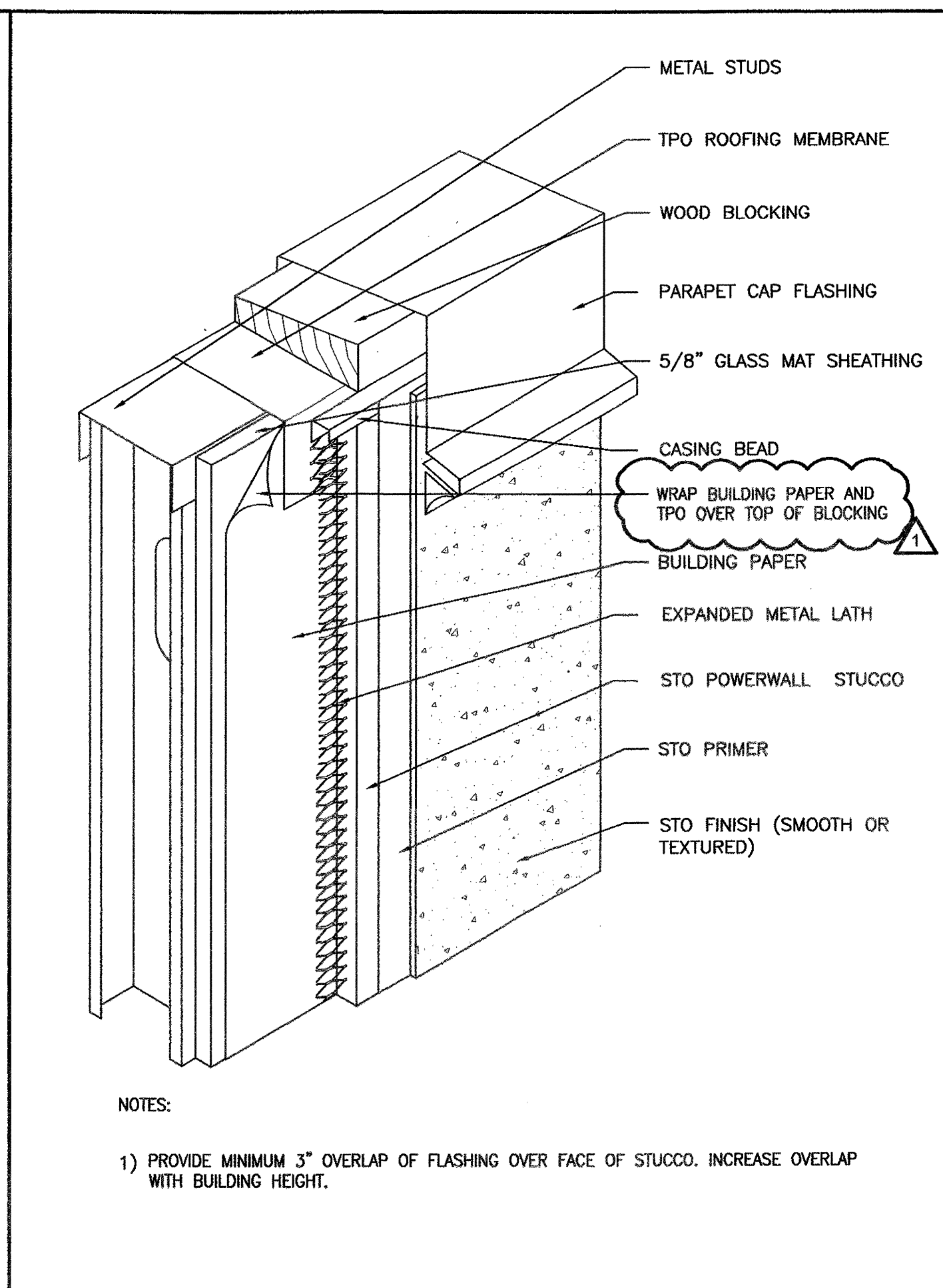


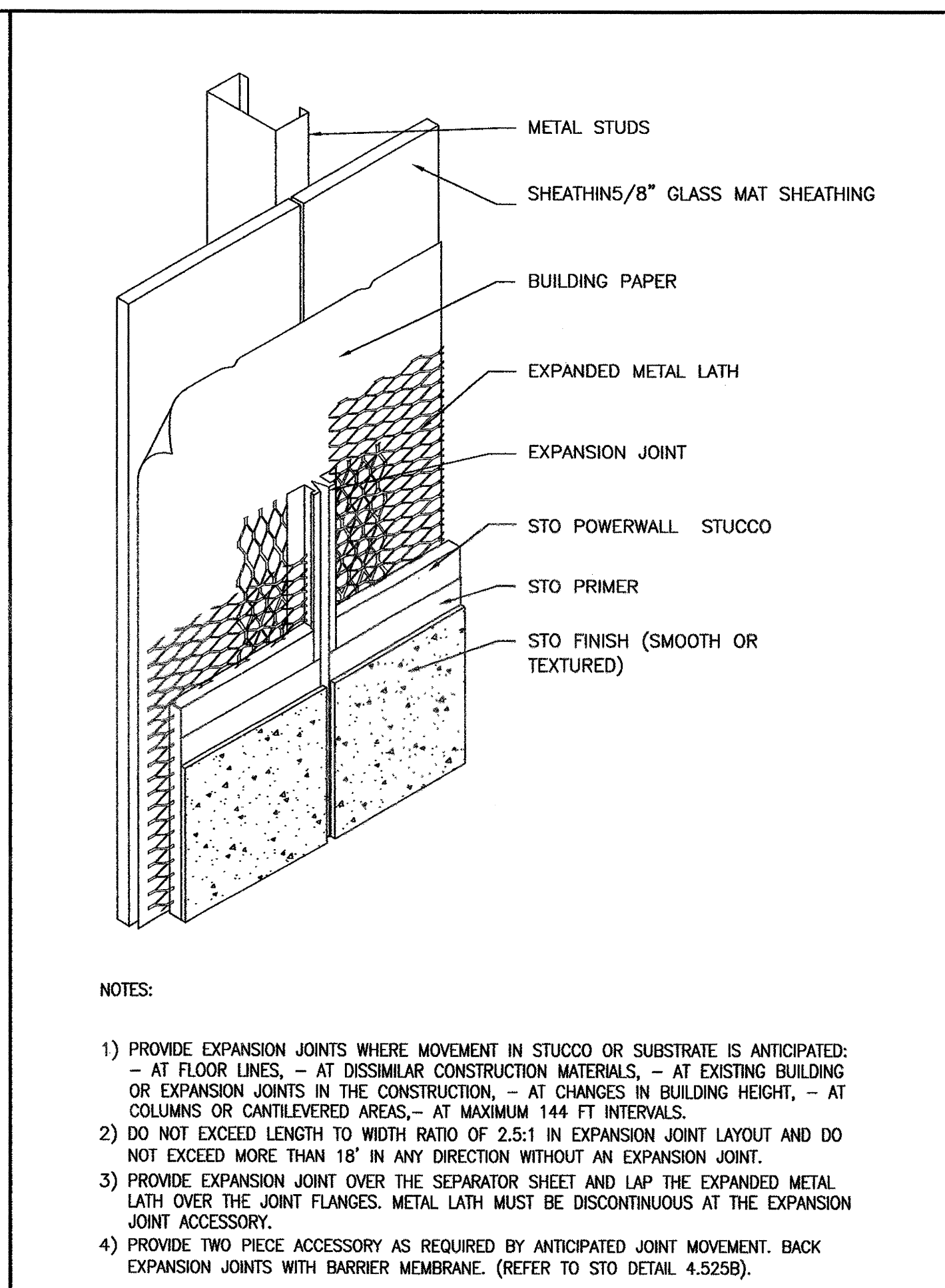
This drawing is the property of McKellar & Associates. Unauthorized use of any kind, including on other projects, is prohibited. April 26, 2006



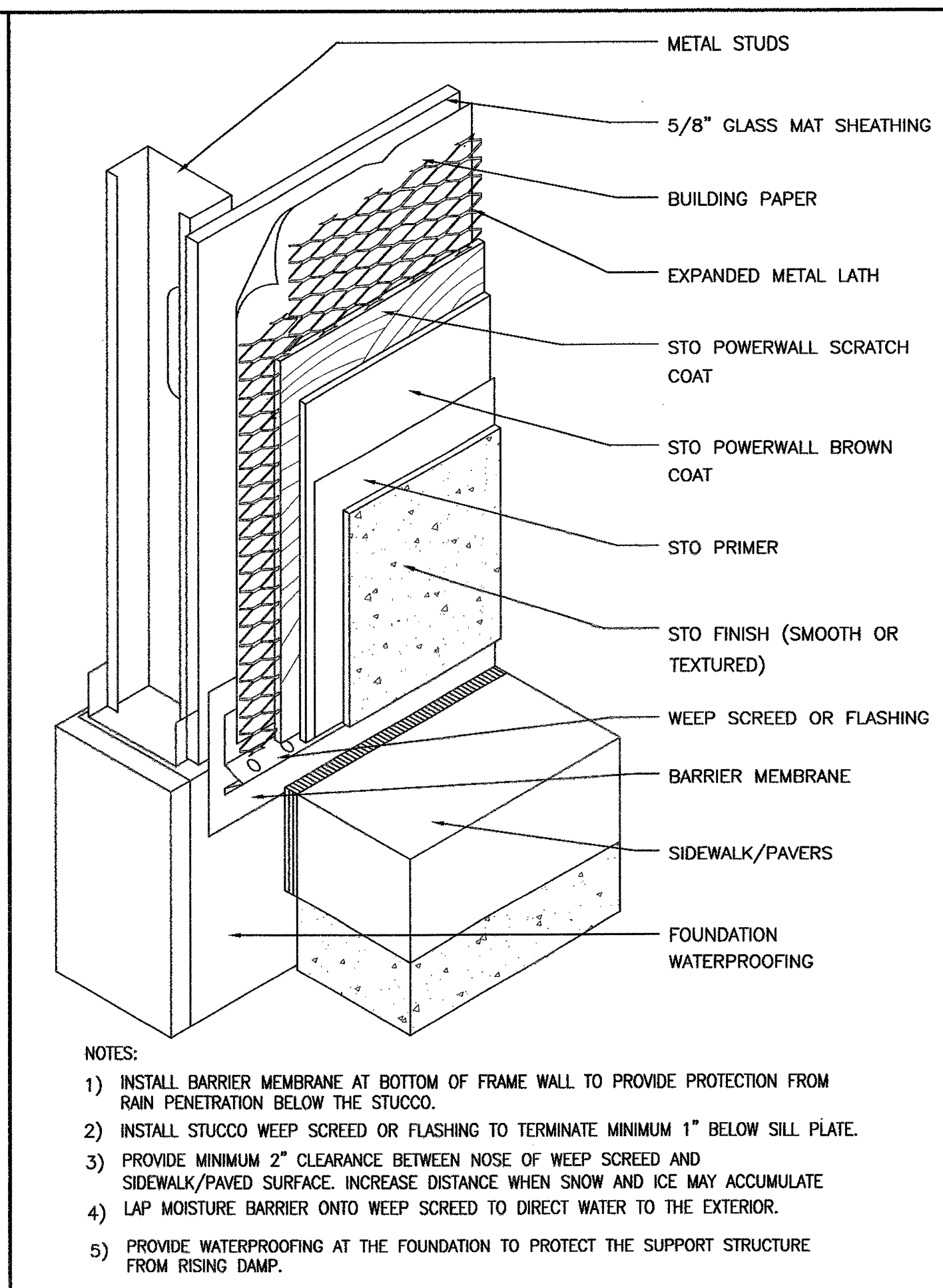
- NOTES:
- 1) EXTEND BARRIER MEMBRANE MINIMUM 4" BEHIND STO POWERWALL STUCCO.
 - 2) LAP STUCCO OVER THE FLASHING ASSEMBLY AT THE TOP BY A MINIMUM OF 2" AND TERMINATE WITH 1/2" JOINT AROUND THE PERIMETER.
 - 3) REFER TO STO DETAIL 4.64B FOR ASSEMBLY OF SADDLE FLASHING.
 - 4) PROVIDE PARAPET CAP FLASHING AS PER STO DETAIL 4.60B.



- NOTES:
- 1) PROVIDE MINIMUM 3" OVERLAP OF FLASHING OVER FACE OF STUCCO. INCREASE OVERLAP WITH BUILDING HEIGHT.



- NOTES:
- 1) PROVIDE EXPANSION JOINTS WHERE MOVEMENT IN STUCCO OR SUBSTRATE IS ANTICIPATED: - AT FLOOR LINES, - AT DISSIMILAR CONSTRUCTION MATERIALS, - AT EXISTING BUILDING OR EXPANSION JOINTS IN THE CONSTRUCTION, - AT CHANGES IN BUILDING HEIGHT, - AT COLUMNS OR CANTILEVERED AREAS, - AT MAXIMUM 144 FT INTERVALS.
 - 2) DO NOT EXCEED LENGTH TO WIDTH RATIO OF 2.5:1 IN EXPANSION JOINT LAYOUT AND DO NOT EXCEED MORE THAN 18" IN ANY DIRECTION WITHOUT AN EXPANSION JOINT.
 - 3) PROVIDE EXPANSION JOINT OVER THE SEPARATOR SHEET AND LAP THE EXPANDED METAL LATH OVER THE JOINT FLANGES. METAL LATH MUST BE DISCONTINUOUS AT THE EXPANSION JOINT ACCESSORY.
 - 4) PROVIDE TWO PIECE ACCESSORY AS REQUIRED BY ANTICIPATED JOINT MOVEMENT. BACK EXPANSION JOINTS WITH BARRIER MEMBRANE. (REFER TO STO DETAIL 4.525B).



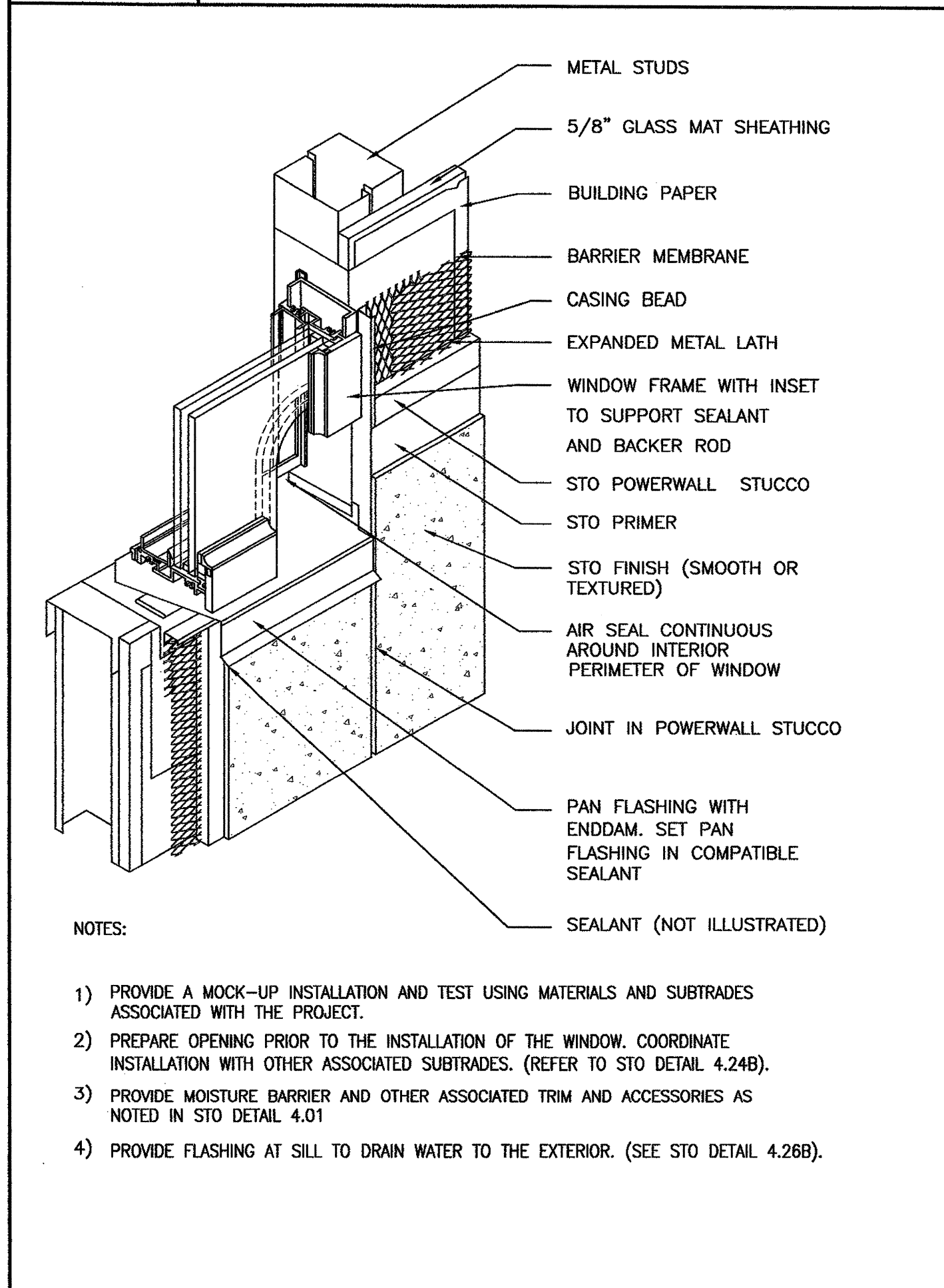
- NOTES:
- 1) INSTALL BARRIER MEMBRANE AT BOTTOM OF FRAME WALL TO PROVIDE PROTECTION FROM RAIN PENETRATION BELOW THE STUCCO.
 - 2) INSTALL STUCCO WEEP SCREED OR FLASHING TO TERMINATE MINIMUM 1" BELOW SILL PLATE.
 - 3) PROVIDE MINIMUM 2" CLEARANCE BETWEEN NOSE OF WEEP SCREED AND SIDEWALK/PAVED SURFACE. INCREASE DISTANCE WHEN SNOW AND ICE MAY ACCUMULATE.
 - 4) LAP MOISTURE BARRIER ONTO WEEP SCREED TO DIRECT WATER TO THE EXTERIOR.
 - 5) PROVIDE WATERPROOFING AT THE FOUNDATION TO PROTECT THE SUPPORT STRUCTURE FROM RISING DAMP.

1 STUCCO DETAIL
N.T.S. SADDLE FLASHING

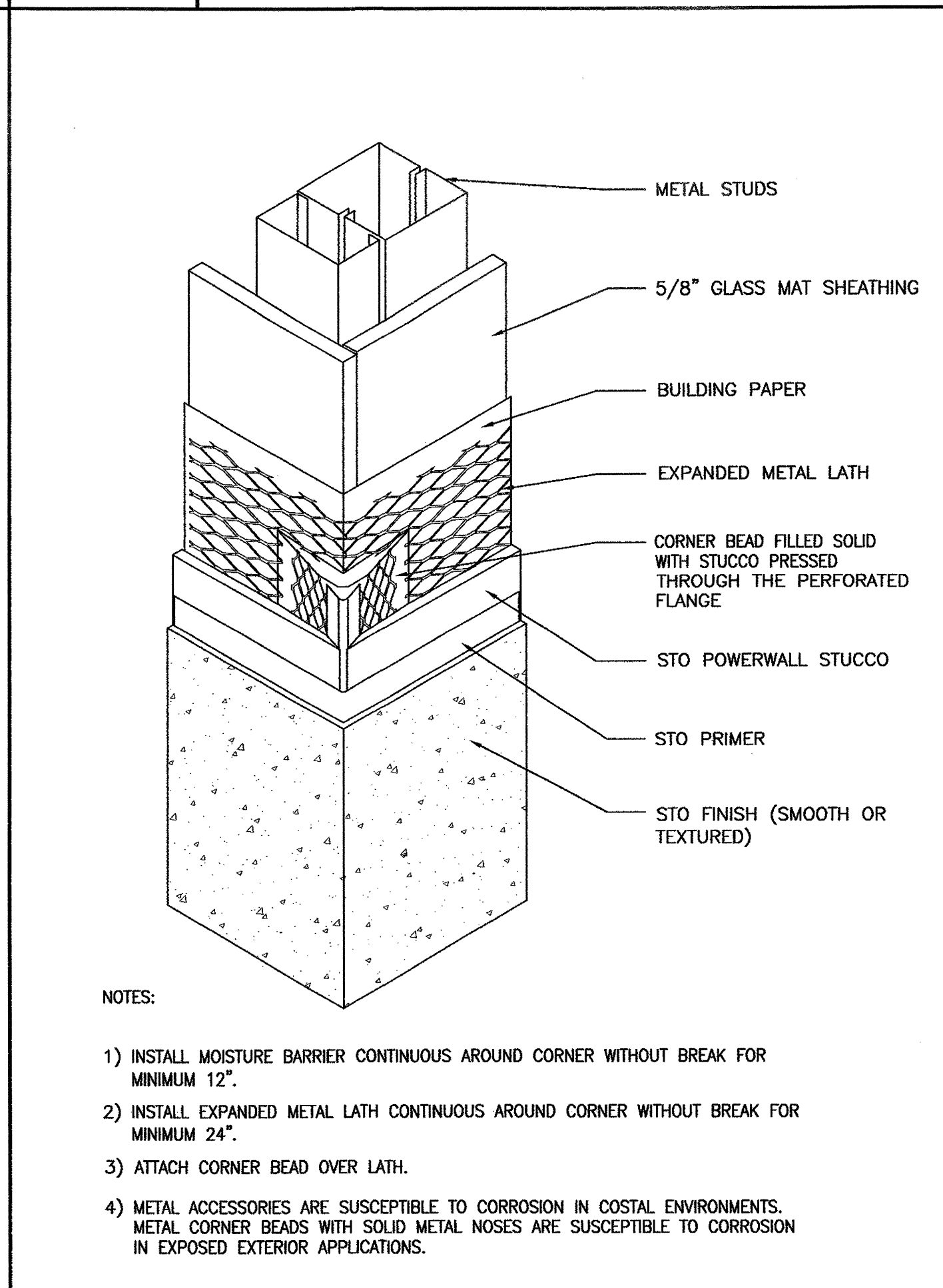
2 STUCCO DETAIL
N.T.S. PARAPET CAP

3 STUCCO DETAIL
N.T.S. EXPANSION JOINT

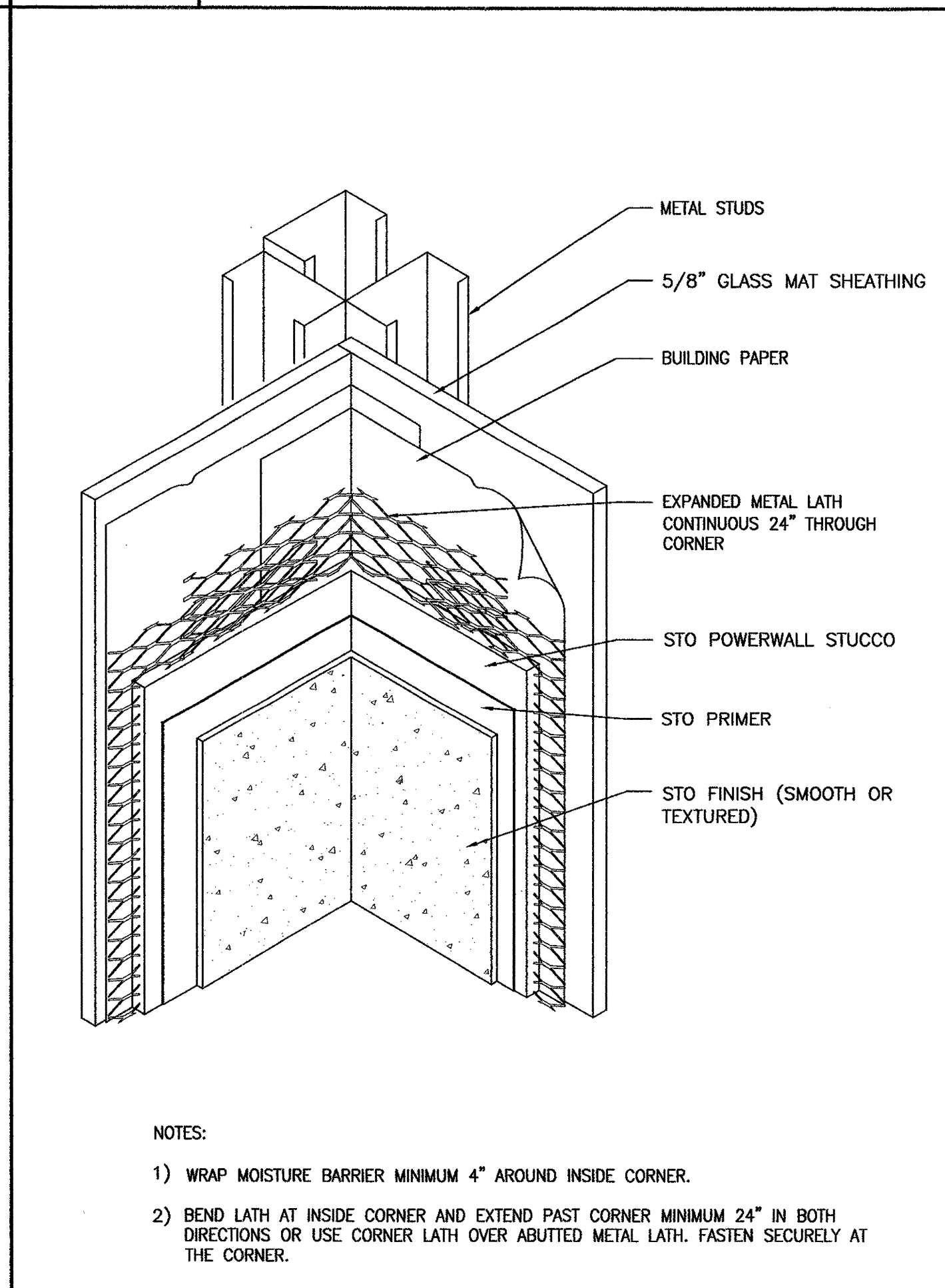
4 STUCCO DETAIL
N.T.S. TERMINATION AT GRADE



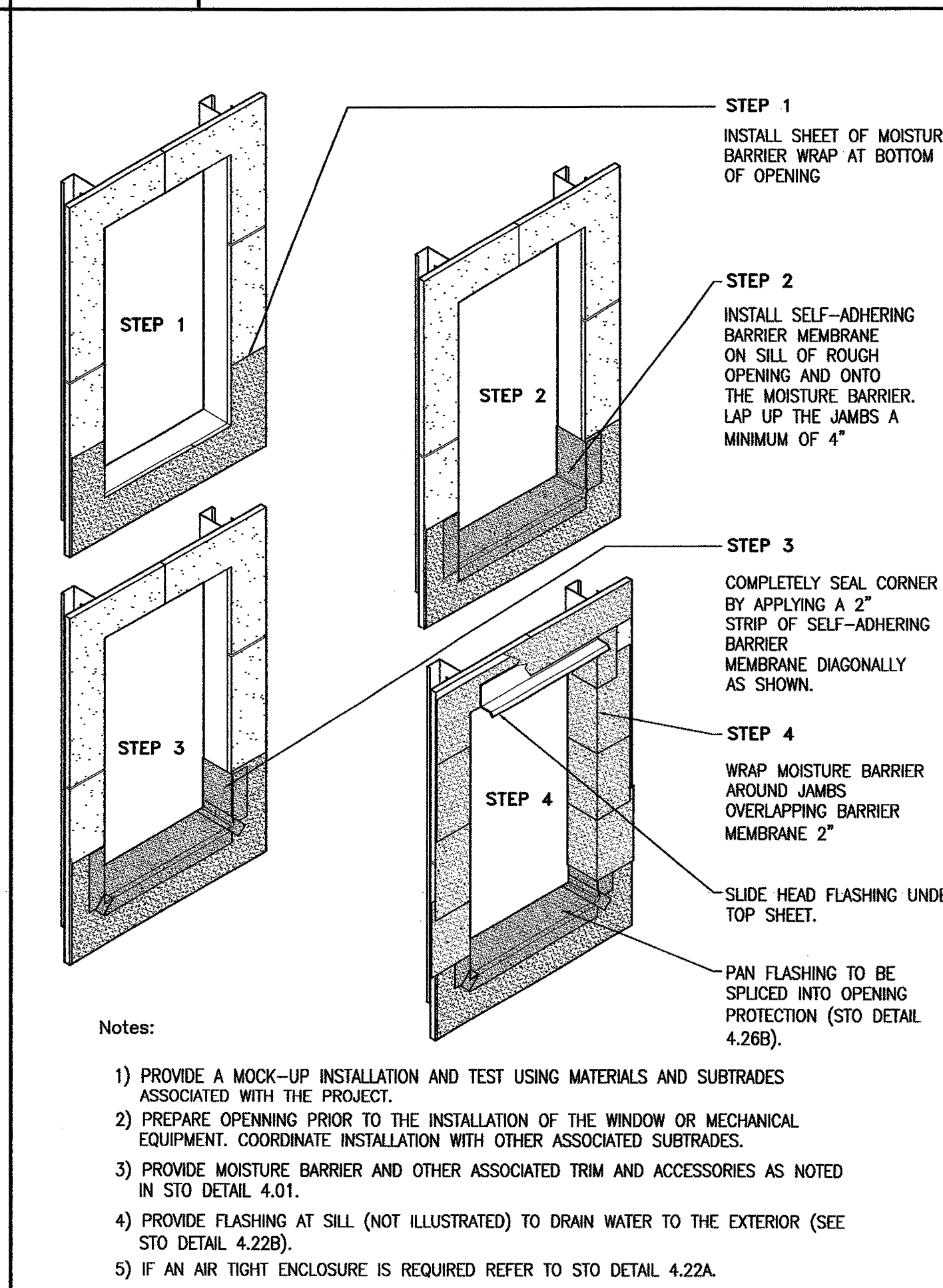
- NOTES:
- 1) PROVIDE A MOCK-UP INSTALLATION AND TEST USING MATERIALS AND SUBSTRATES ASSOCIATED WITH THE PROJECT.
 - 2) PREPARE OPENING PRIOR TO THE INSTALLATION OF THE WINDOW. COORDINATE INSTALLATION WITH OTHER ASSOCIATED SUBSTRATES. (REFER TO STO DETAIL 4.24B).
 - 3) PROVIDE MOISTURE BARRIER AND OTHER ASSOCIATED TRIM AND ACCESSORIES AS NOTED IN STO DETAIL 4.01.
 - 4) PROVIDE FLASHING AT SILL TO DRAIN WATER TO THE EXTERIOR. (SEE STO DETAIL 4.26B).



- NOTES:
- 1) INSTALL MOISTURE BARRIER CONTINUOUS AROUND CORNER WITHOUT BREAK FOR MINIMUM 12".
 - 2) INSTALL EXPANDED METAL LATH CONTINUOUS AROUND CORNER WITHOUT BREAK FOR MINIMUM 24".
 - 3) ATTACH CORNER BEAD OVER LATH.
 - 4) METAL ACCESSORIES ARE SUSCEPTIBLE TO CORROSION IN COSTAL ENVIRONMENTS. METAL CORNER BEADS WITH SOLID METAL NOSES ARE SUSCEPTIBLE TO CORROSION IN EXPOSED EXTERIOR APPLICATIONS.



- NOTES:
- 1) WRAP MOISTURE BARRIER MINIMUM 4" AROUND INSIDE CORNER.
 - 2) BEND LATH AT INSIDE CORNER AND EXTEND PAST CORNER MINIMUM 24" IN BOTH DIRECTIONS OR USE CORNER LATH OVER ABUTTED METAL LATH. FASTEN SECURELY AT THE CORNER.



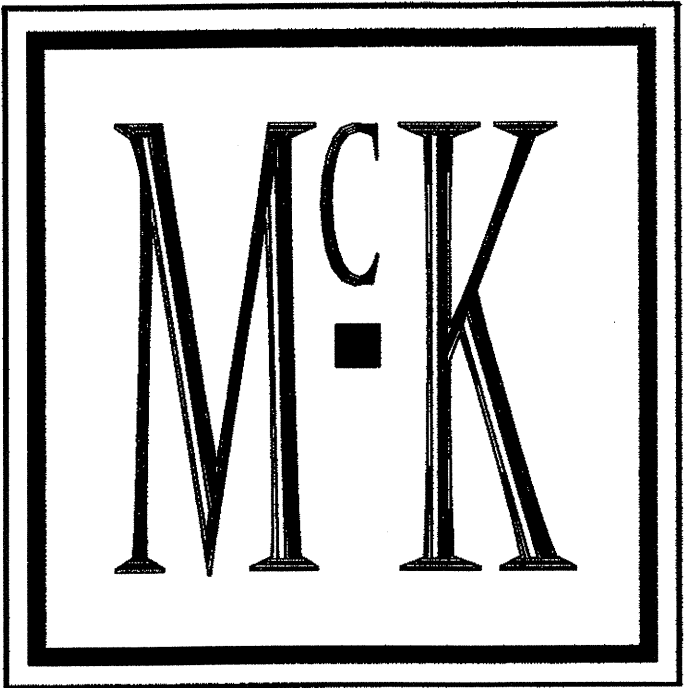
- Notes:
- 1) PROVIDE A MOCK-UP INSTALLATION AND TEST USING MATERIALS AND SUBSTRATES ASSOCIATED WITH THE PROJECT.
 - 2) PREPARE OPENING PRIOR TO THE INSTALLATION OF THE WINDOW OR MECHANICAL EQUIPMENT. COORDINATE INSTALLATION WITH OTHER ASSOCIATED SUBSTRATES.
 - 3) PROVIDE MOISTURE BARRIER AND OTHER ASSOCIATED TRIM AND ACCESSORIES AS NOTED IN STO DETAIL 4.01.
 - 4) PROVIDE FLASHING AT SILL (NOT ILLUSTRATED) TO DRAIN WATER TO THE EXTERIOR (SEE STO DETAIL 4.22B).
 - 5) IF AN AIR TIGHT ENCLOSURE IS REQUIRED REFER TO STO DETAIL 4.22A.

5 STUCCO DETAIL
N.T.S. WINDOW SILL

6 STUCCO DETAIL
N.T.S. OUTSIDE CORNER

7 STUCCO DETAIL
N.T.S. INSIDE CORNER

8 WATER PROOFING DETAIL
N.T.S. PREPARATION OF ROUGH OPENING (TYP.)



McKELLAR & ASSOCIATES
ARCHITECTS

Post Office Box 1076, Mt Pleasant, SC 29465
Phone 843/884.9085 Fax 843/884.9058

1	REVISION 1	04.17.06
NO	REVISION	DATE

OFFICES AT BELLE HALL

LONG POINT ROAD
MT. PLEASANT, SC

BUILDINGS 1 & 2 STUCCO DETAILS

A105

DESIGNED	CLS/JLC	SHEET	OF
DRAWN	DL/DLS	SCALE	1/4"=1'-0"
REVIEWED	AWJ	PROJECT NO	200548.10
CHECKED	AMM	DATE	1.6.06

FOR CONSTRUCTION

Drawing name: P:\2008 Project\2008_10_Southwestern - Belle Hall\Office\AC2D\44A\104\105.dwg, Apr 26, 2006 - 11:42am