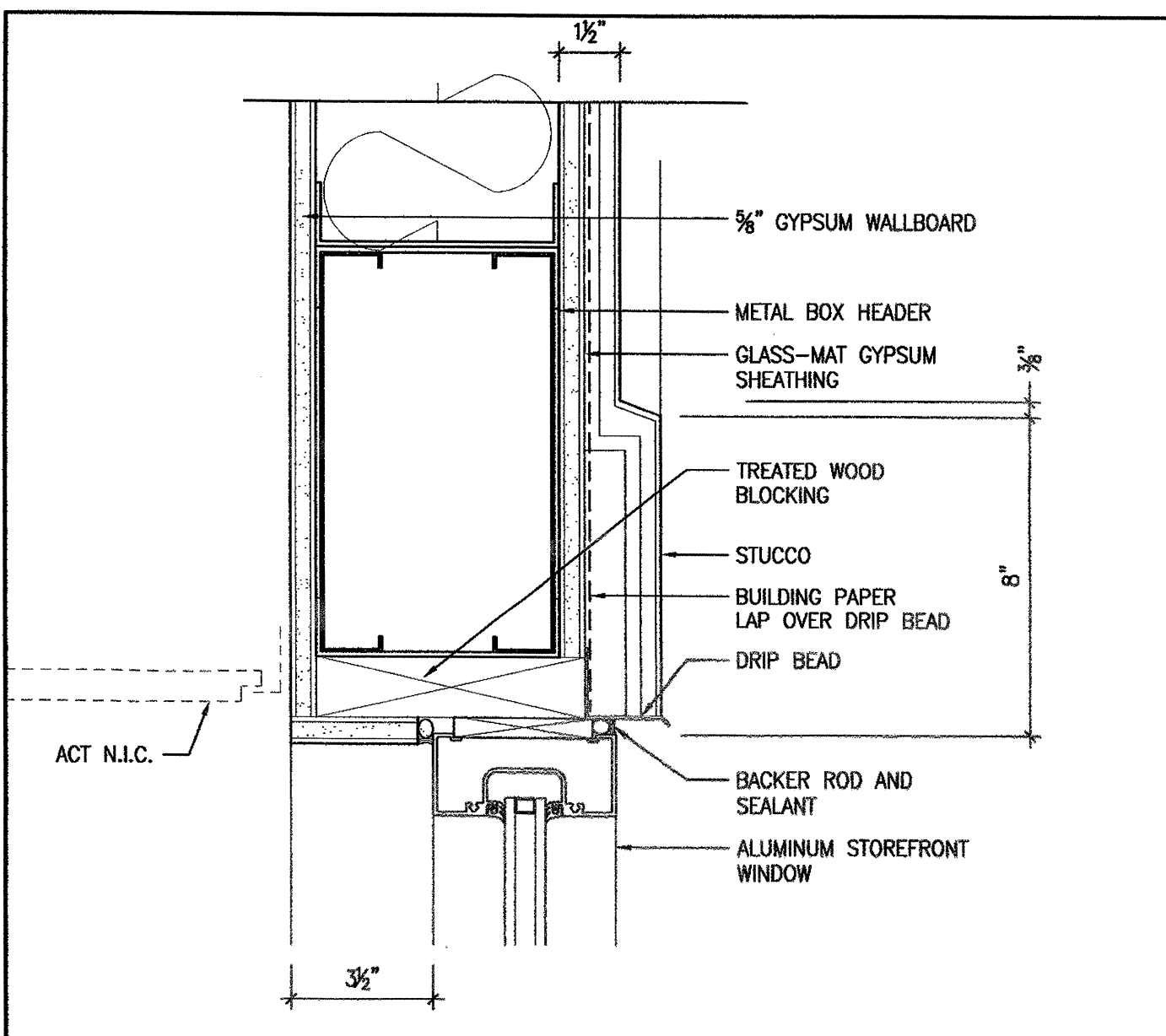
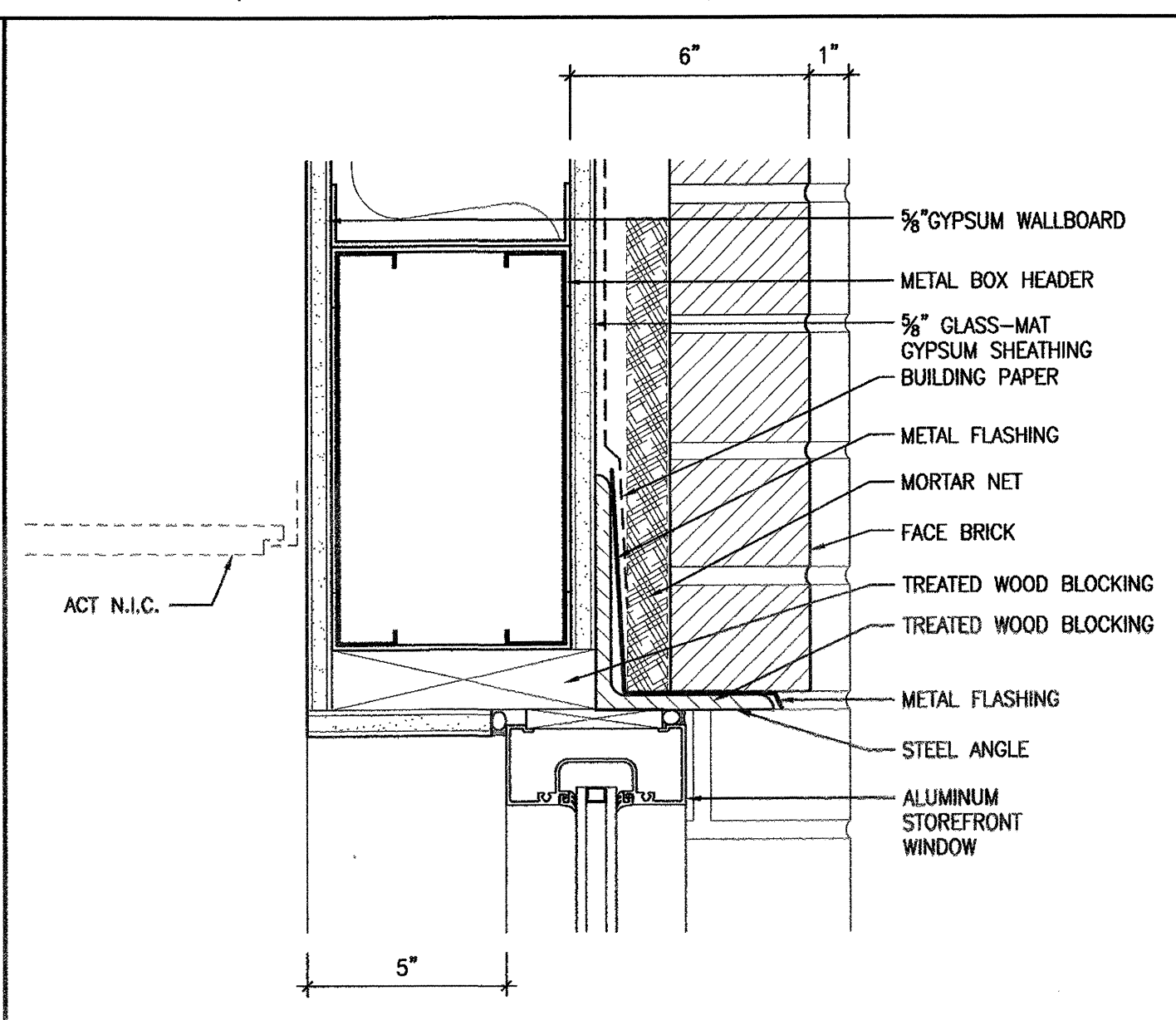


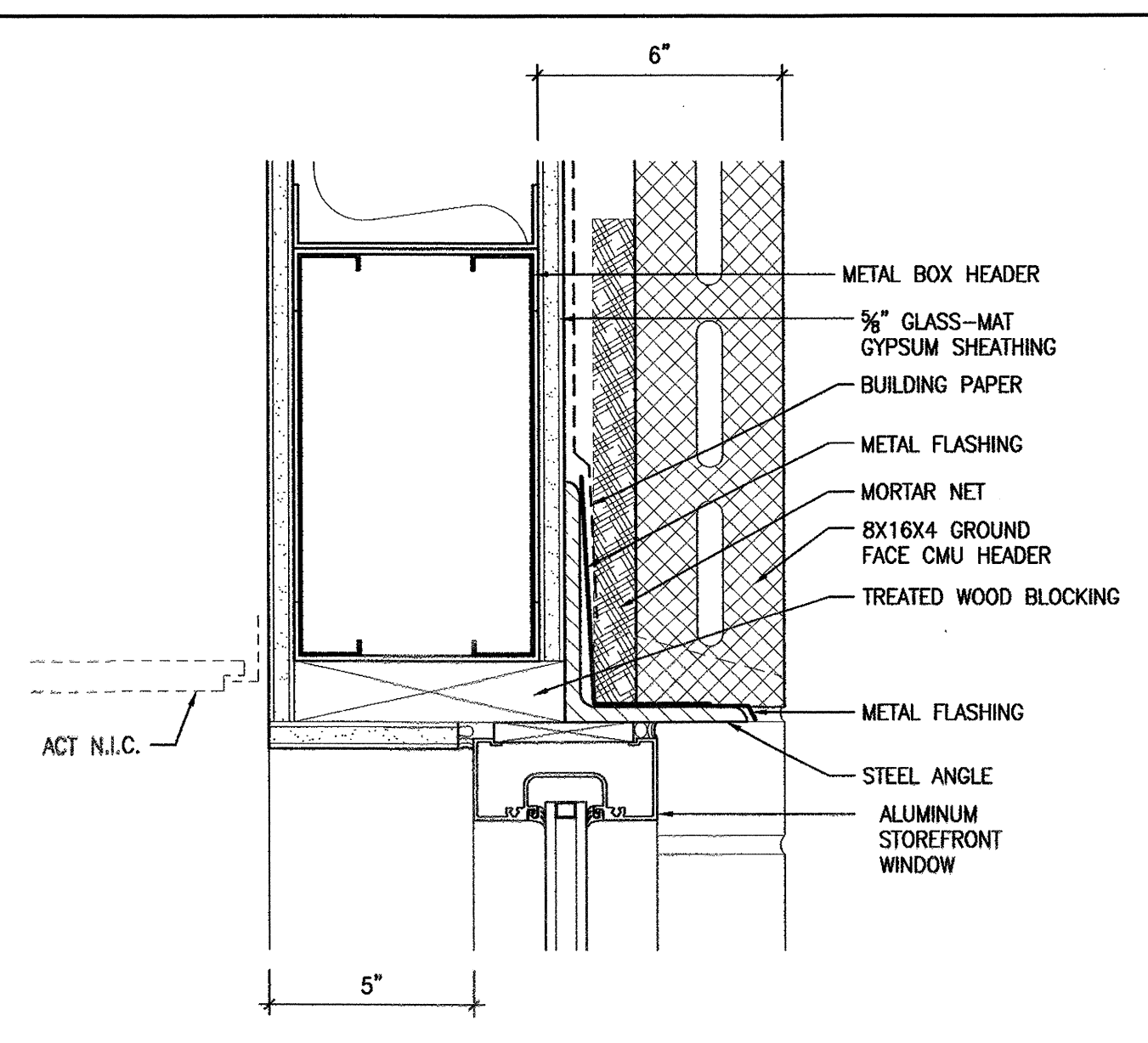
This drawing is the property of McKellar & Associates. Unauthorized use of any kind, including on other projects, is prohibited. April 26, 2006



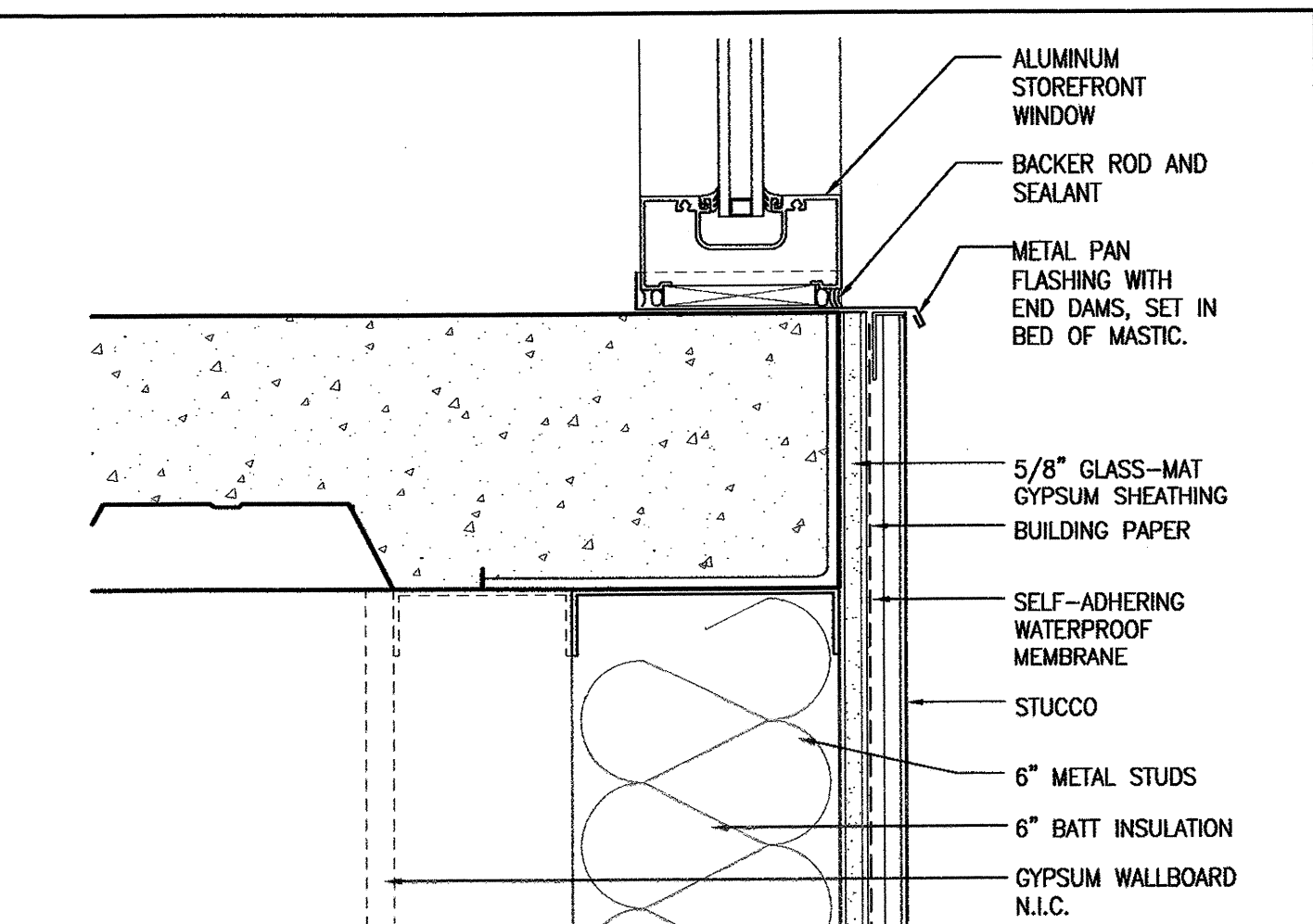
1 HEAD DETAIL
3"=1'-0" @ STUCCO WALLS



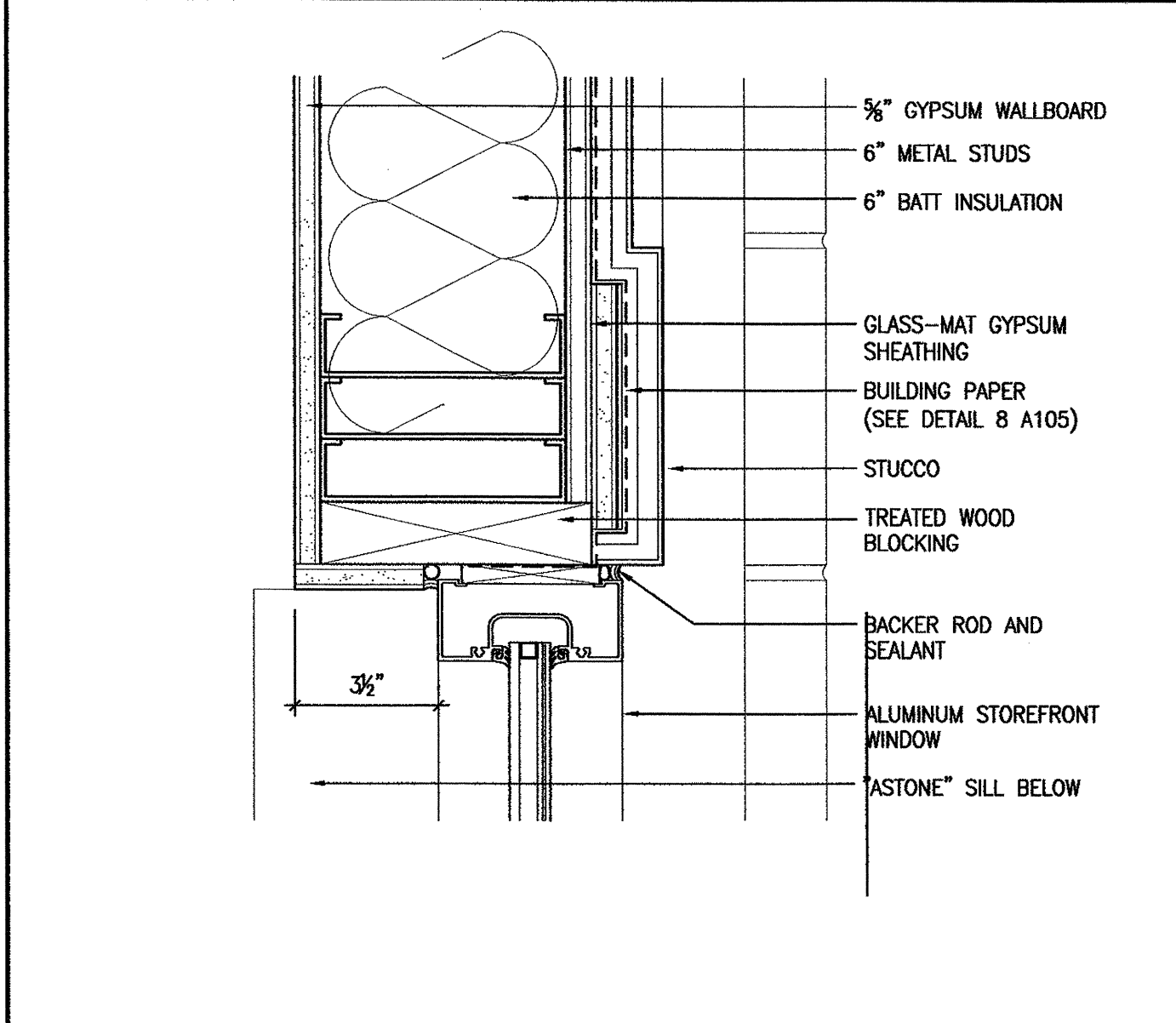
2 HEAD DETAIL
3"=1'-0" @ BRICK WALLS



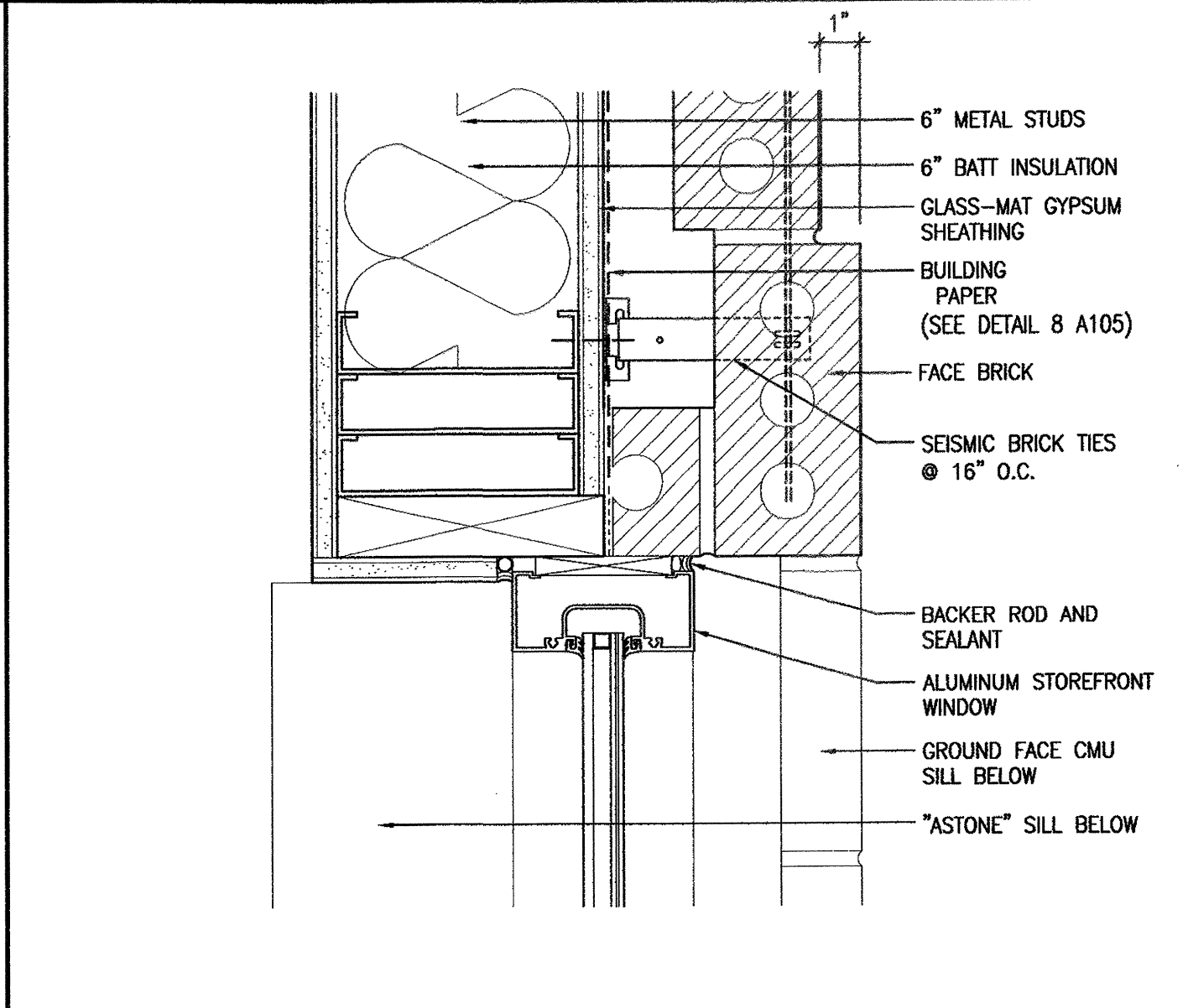
3 HEAD DETAIL
3"=1'-0" @ GROUND FACE CMU WALLS



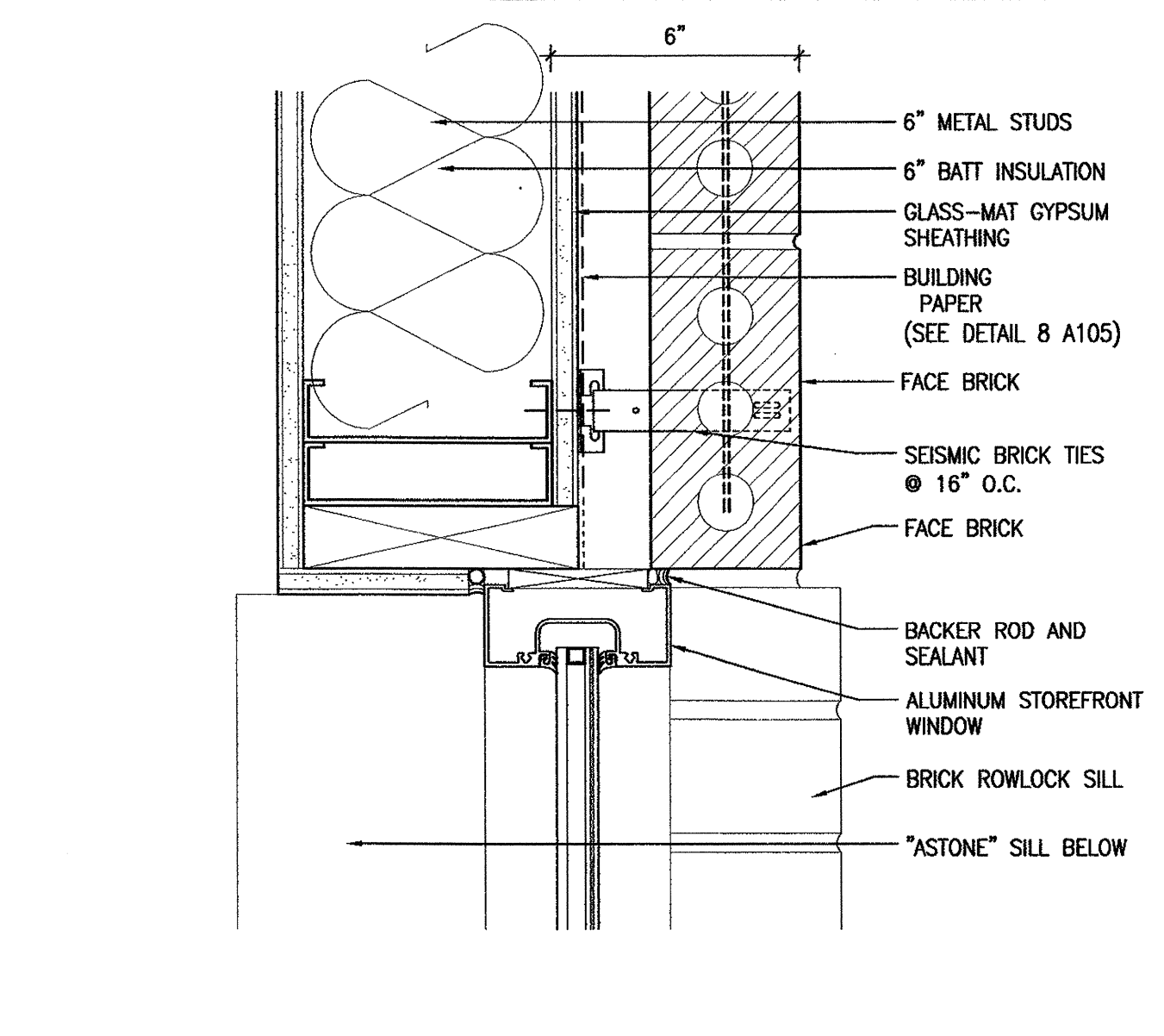
4 SILL DETAIL
3"=1'-0"



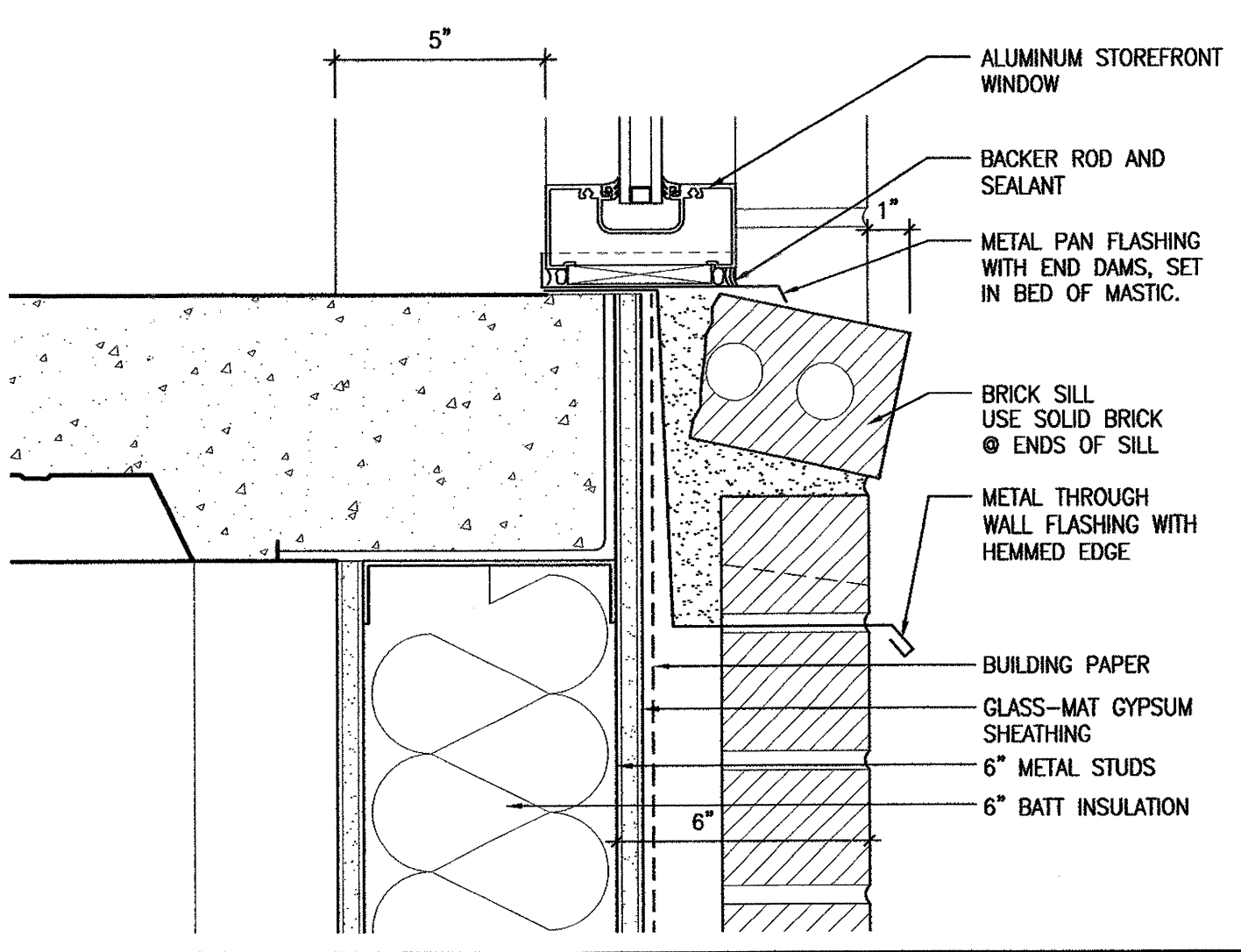
5 JAMB DETAIL
3"=1'-0" @ STUCCO WALLS



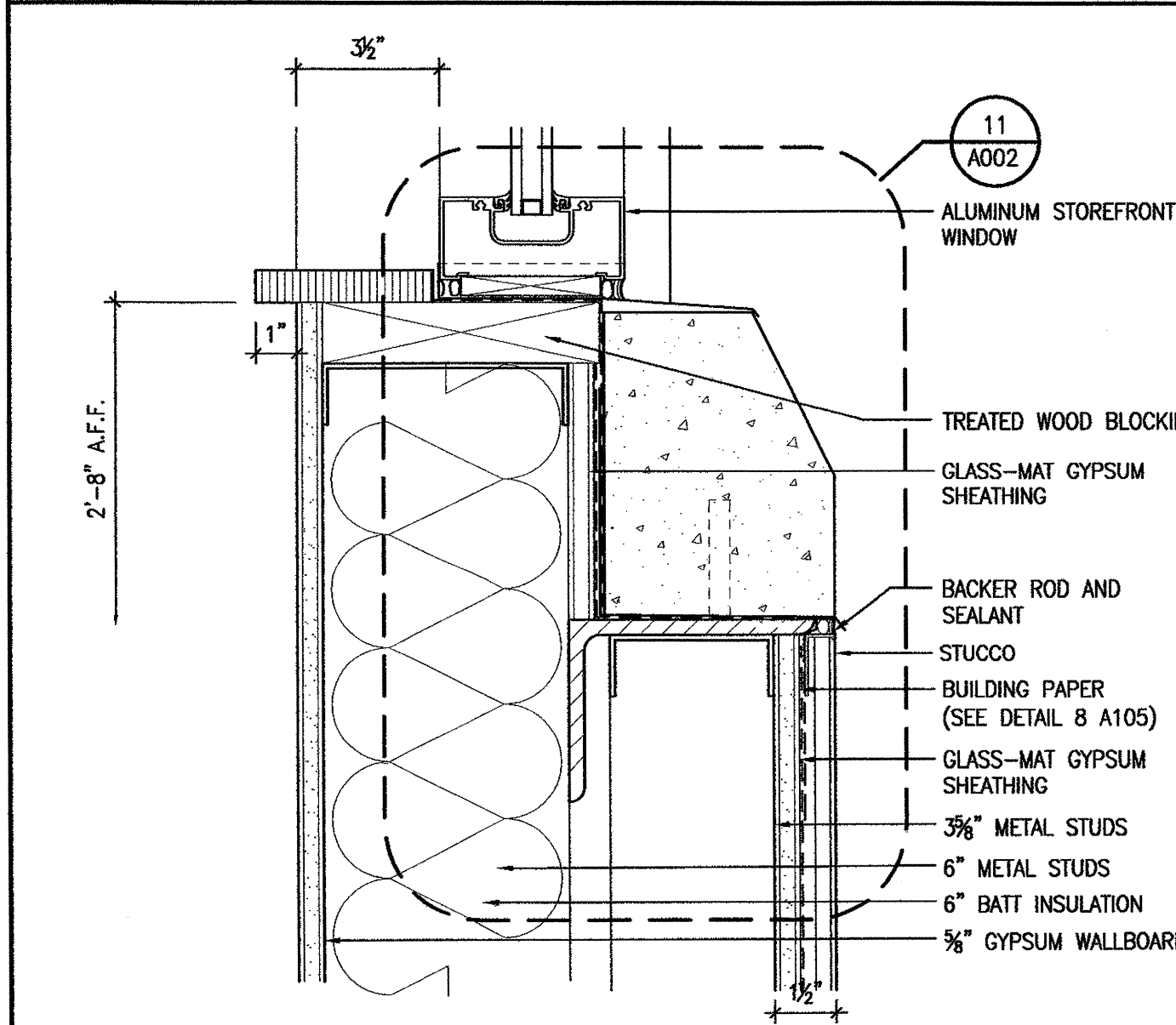
6 JAMB DETAIL
3"=1'-0" @ BRICK WALLS



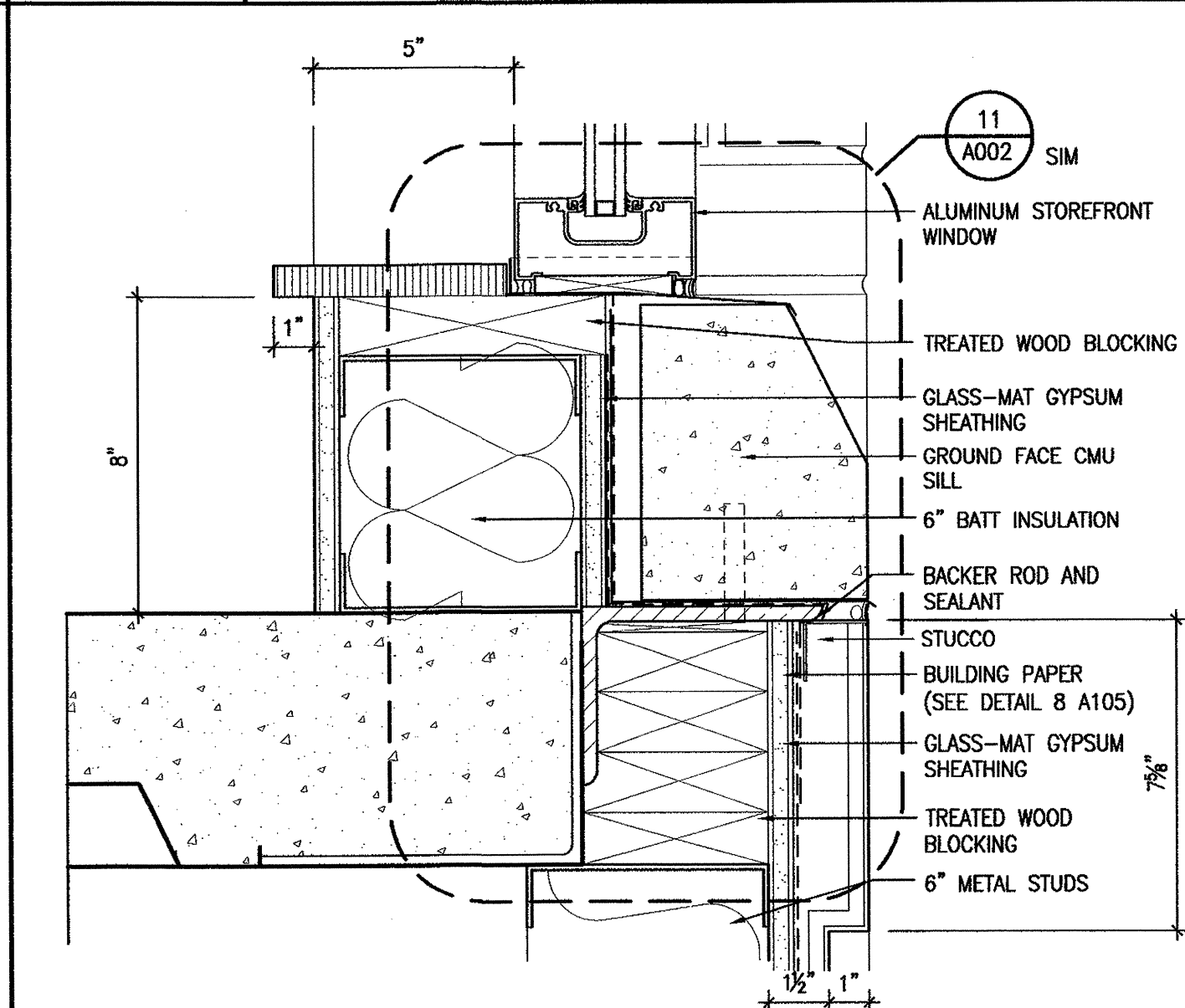
7 JAMB DETAIL
3"=1'-0"



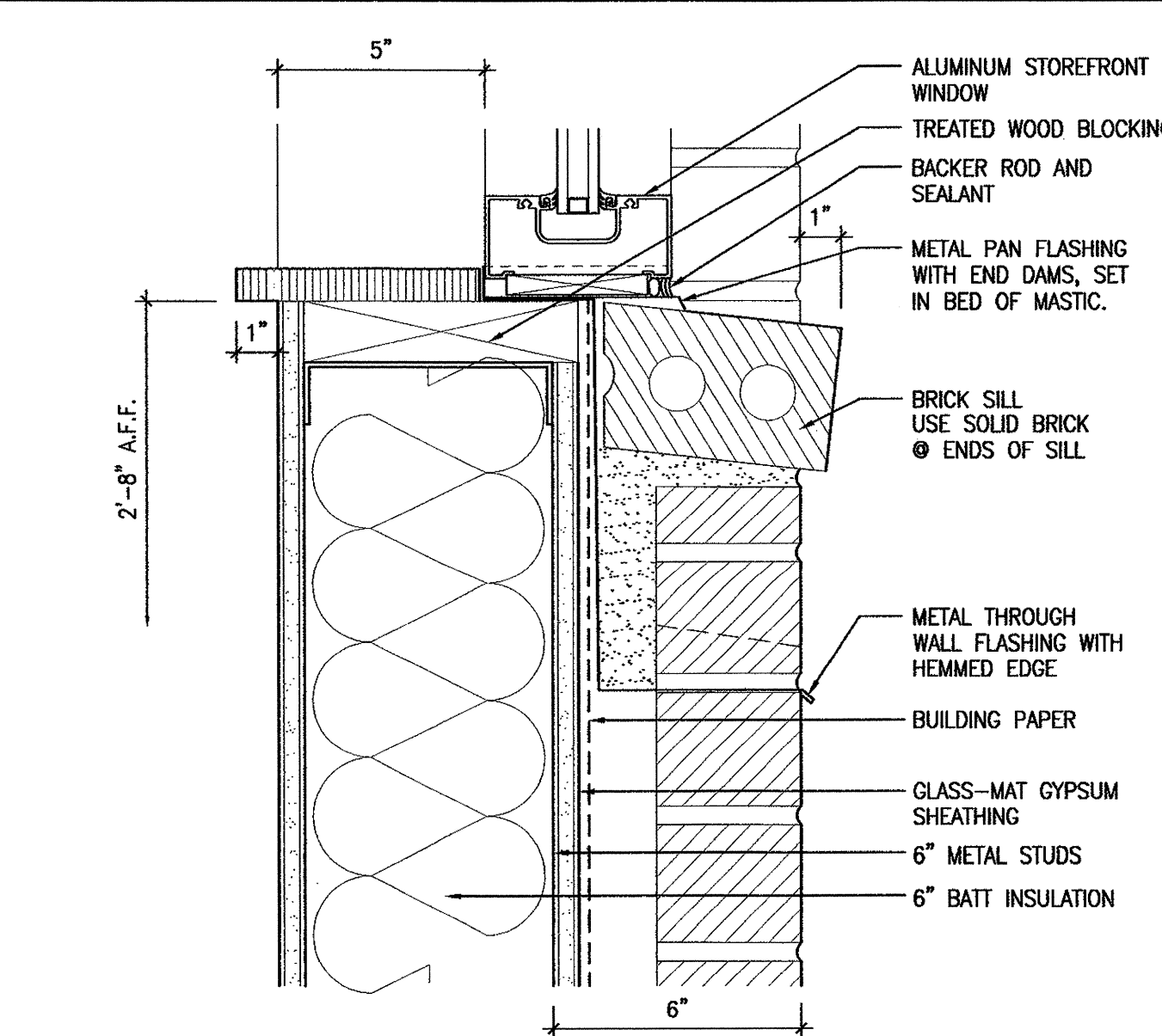
7A SILL DETAIL
3"=1'-0"



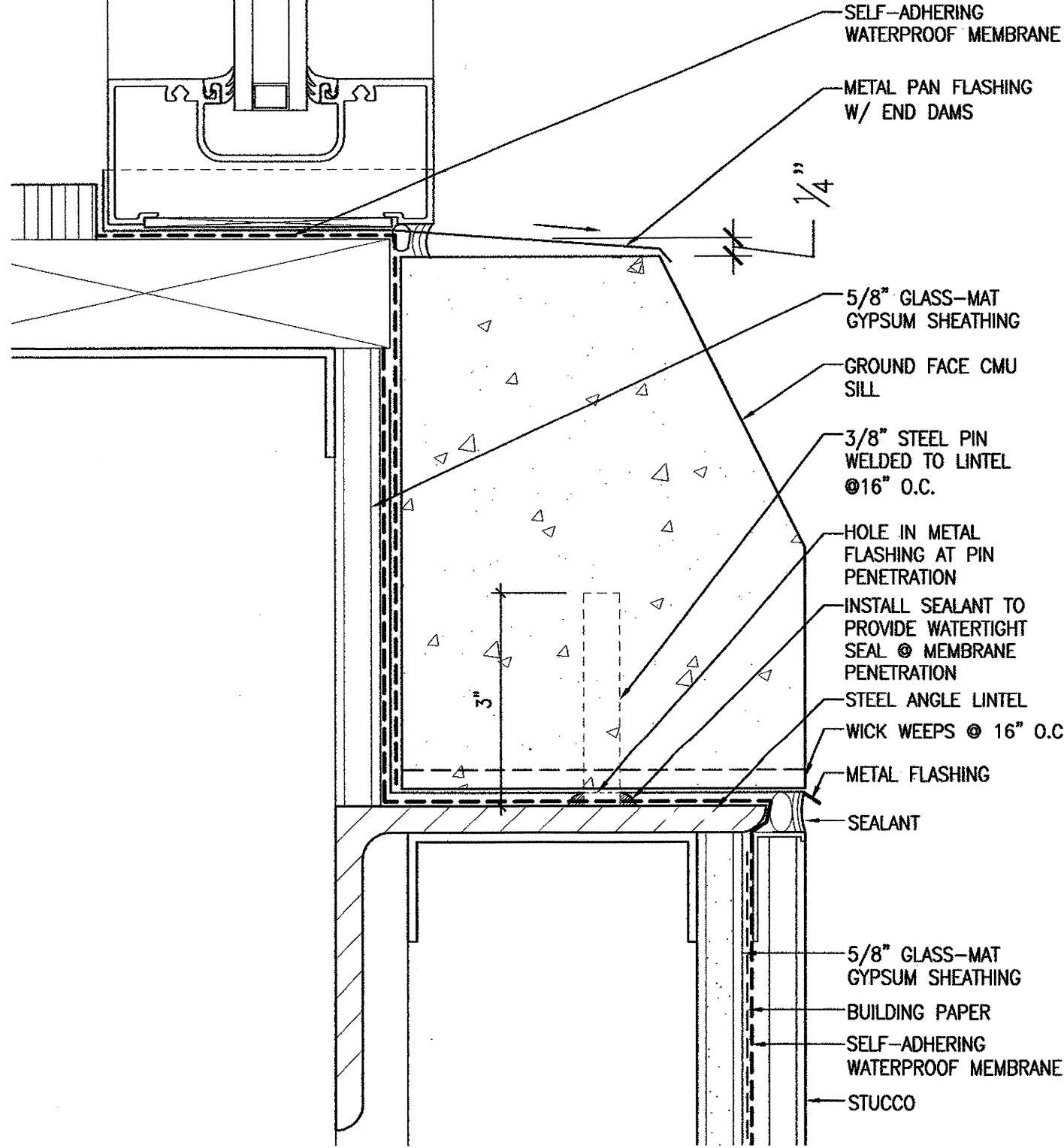
8 SILL DETAIL
3"=1'-0"



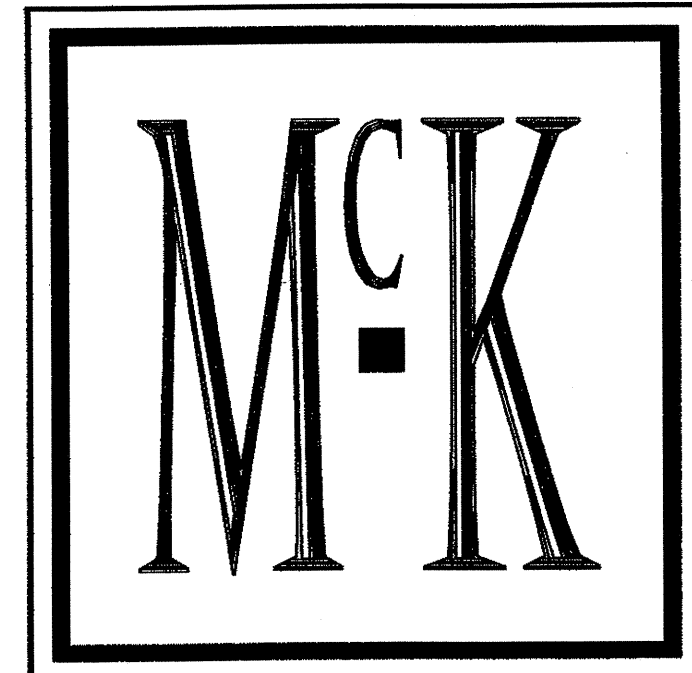
9 SILL DETAIL
3"=1'-0"



10 SILL DETAIL
3"=1'-0"



11 SILL DETAIL
6"=1'-0"



McKELLAR & ASSOCIATES
ARCHITECTS

Post Office Box 1076, Mt Pleasant, SC 29465
Phone 843/884.9085 Fax 843/884.9058

NO	REVISION	DATE

OFFICES AT BELLE HALL

LONG POINT ROAD
MT. PLEASANT, SC

HEAD, JAMB & SILL DETAILS

A002

DESIGNED	CLS/JLC	SHEET	OF
DRAWN	DL/JLC	SCALE	SCALE
REVIEWED	AWJ	PROJECT NO	200548.10
CHECKED	AMM	DATE	1.8.06

FOR CONSTRUCTION

Drawing name: P:\2005 Projects\0504 10 - Belle Hall Offices\A002.dwg Apr 26, 2006 - 11:37am