

This drawing is the property of McKellar & Associates. Unauthorized use of any kind, including on other projects, is prohibited. April 26, 2006

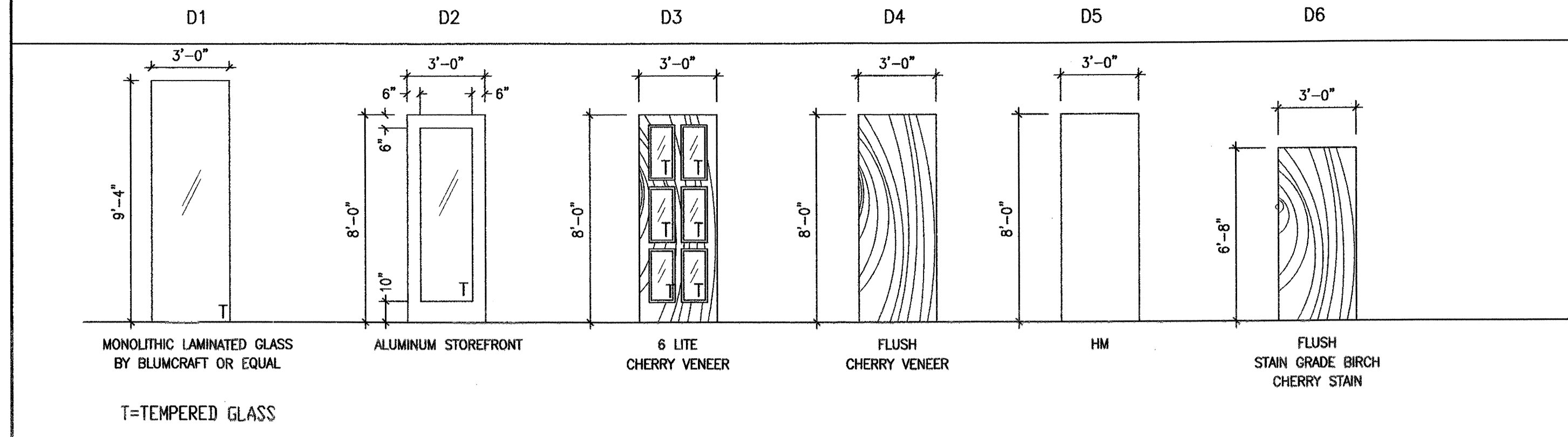
## DOOR SCHEDULE

DOOR NUMBER	TYPE	DOOR				FRAME				THRES-HOLD	HARD-WARE	NOTES		
		WIDTH	HEIGHT	THICKNESS	ELEV.	MATERIAL	U. L. LABEL	MATERIAL	ELEV.				HEAD	JAMB
101A	PAIR	3'-0"	9'-4"	1 1/2"	D1	GLASS	-	-	C (NOTE 4)	1/A003	2/A003	3/A003	A	5
101B	PAIR	3'-0"	8'-0"	1 3/4"	D3	WD/GLASS	-	WD	WD2		6/A703		D	5
101C	PAIR	3'-0"	8'-0"	1 3/4"	D3	WD/GLASS	-	WD	WD2		6/A703		D	5
102A		3'-0"	8'-0"	1 3/4"	D2	ALUM	-	ALUM	E (NOTE 4)		1/A002		B	5
102B		3'-0"	8'-0"	1 3/4"	D4	WD	1 HR	HM	HM1				E	5
103	PAIR	3'-0"	8'-0"	1 3/4"	D2	ALUM	-	ALUM	D (NOTE 4)		3/A002		A	5
104A		3'-0"	8'-0"	1 3/4"	D2	ALUM	-	ALUM	E (NOTE 4)		1/A002		B	5
104B		3'-0"	8'-0"	1 3/4"	D4	WD	1 HR	HM	HM1				E	5
105		3'-0"	8'-0"	1 3/4"	D4	WD	1 HR	WD	WD1		6/A703		C	5
106		3'-0"	8'-0"	1 3/4"	D4	WD	-	WD	WD1		6/A703		C	5
107		3'-0"	8'-0"	1 3/4"	D4	WD	-	WD	WD1		6/A703		E	5
108		3'-0"	8'-0"	1 3/4"	D4	WD	-	WD	WD1		6/A703		E	5
109		3'-0"	8'-0"	1 3/4"	D4	WD	1 HR	WD	WD1		6/A703		C	5
110	PAIR	3'-0"	8'-0"	1 3/4"	D4	WD	-	WD	WD2		6/A703		C	1.5
112	TEMP	3'-0"	6'-8"	1 3/4"	D4	WD	-	HM	HM2				-	3.5
114		3'-0"	8'-0"	1 3/4"	D5	HM	-	HM	HM1				C	5
201A	TEMP	3'-0"	6'-8"	1 3/4"	D6	WD	-	HM	HM2				-	3.5
201B		3'-0"	8'-0"	1 3/4"	D4	WD/GLASS	-	WD	WD1		6/A703SIM		D	1.5
202		3'-0"	8'-0"	1 3/4"	D4	WD	1 HR	HM	HM1				E	1.5
203		3'-0"	8'-0"	1 3/4"	D4	WD	1 HR	HM	HM1				E	1.5
204		3'-0"	8'-0"	1 3/4"	D4	WD	-	WD	WD1		6/A703		C	5
205		3'-0"	8'-0"	1 3/4"	D4	WD	-	WD	WD1		6/A703		E	5
206		3'-0"	8'-0"	1 3/4"	D4	WD	-	WD	WD1		6/A703		E	5
207	PAIR	3'-0"	8'-0"	1 3/4"	D4	WD	-	WD	WD2		6/A703		C	1.5
210		3'-0"	8'-0"	1 3/4"	D4	WD	-	WD	WD1		6/A703		SEE VC	5

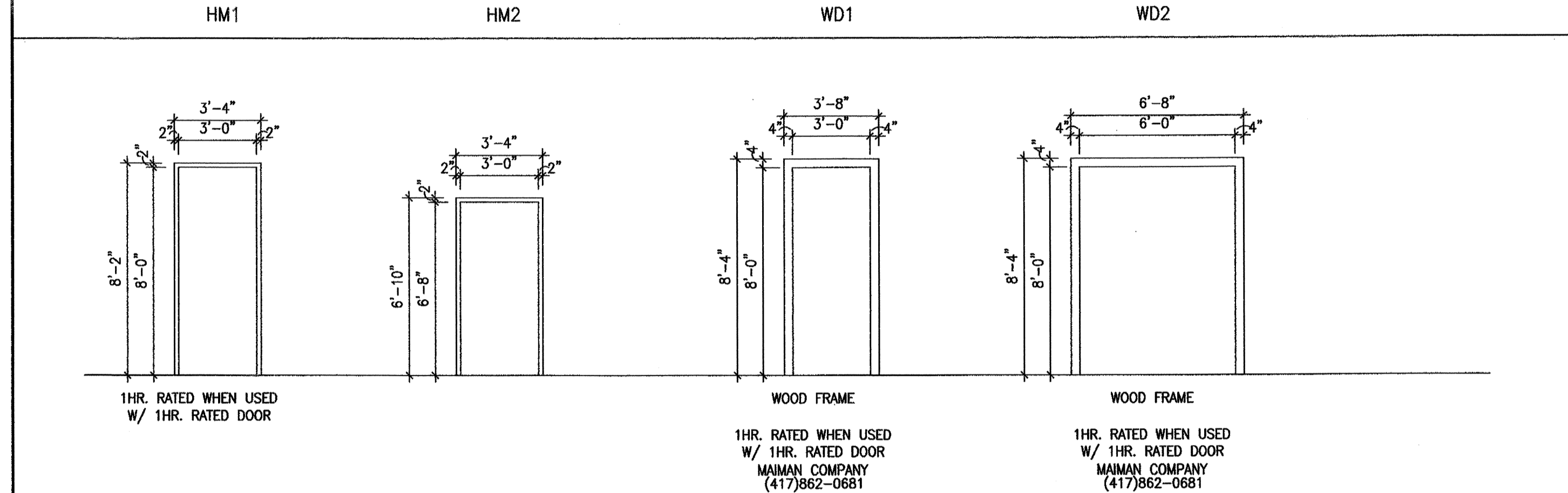
## WINDOW SCHEDULE

OPENING NUMBER	TYPE	SIZE			ELEV.	GLAZING	DETAILS			NOTES
		WIDTH	HEIGHT	THICKNESS			HEAD	JAMB	SILL	
A	S/FRNT	9'-4"	6'-8"	4 1/2"	A	INSUL/TINTED/LOW E	1/A002	5/A002	8/A002	SOLARBAN 60
B	S/FRNT	4'-0"	6'-8"	4 1/2"	B	INSUL/TINTED/LOW E	3/A002 SIM	XXX	XXX	SOLARBAN 60
C	GLASS	12'-0"	9'-4"	1/2"	C	LAM/TINTED	1/A003	2/A003	3/A003	SOLARBAN 60
D	S/FRNT	16'-0"	9'-4"	4 1/2"	D	INSUL/TINTED/LOW E				SOLARBAN 60
E	S/FRNT	7'-4"	9'-4"	4 1/2"	E	INSUL/TINTED/LOW E	1/A002 SIM	5/A002		SOLARBAN 60
F	S/FRNT	7'-4"	6'-8"	4 1/2"	F	INSUL/TINTED/LOW E	1/A002 OR 3/A002	5/A002 OR 6/A002	8/A002SIM OR 10/A002	SOLARBAN 60
G	S/FRNT	9'-4"	6'-8"	4 1/2"	G	INSUL/TINTED/LOW E	2/A002	6/A002	9/A002	SOLARBAN 60
H	S/FRNT	9'-4"	8'-8"	4 1/2"	H	INSUL/TINTED/LOW E	3/A002	7/A002	7A/A002	SOLARBAN 60
J	S/FRNT	7'-4"	8'-8"	4 1/2"	J	INSUL/TINTED/LOW E	3/A002	7/A002	7A/A002	SOLARBAN 60
K	S/FRNT	7'-4"	8'-8"	4 1/2"	K	INSUL/TINTED/LOW E	1/A002 SIM	5/A002	4/A002	SOLARBAN 60
L	S/FRNT	4'-0"	8'-8"	4 1/2"	L	INSUL/TINTED/LOW E	3/A002 SIM		4/A002	SOLARBAN 60
M	S/FRNT	12'-0"	8'-8"	4 1/2"	M	INSUL/TINTED/LOW E	3/A002 SIM			SOLARBAN 60

## DOOR ELEVATIONS



## FRAME ELEVATIONS



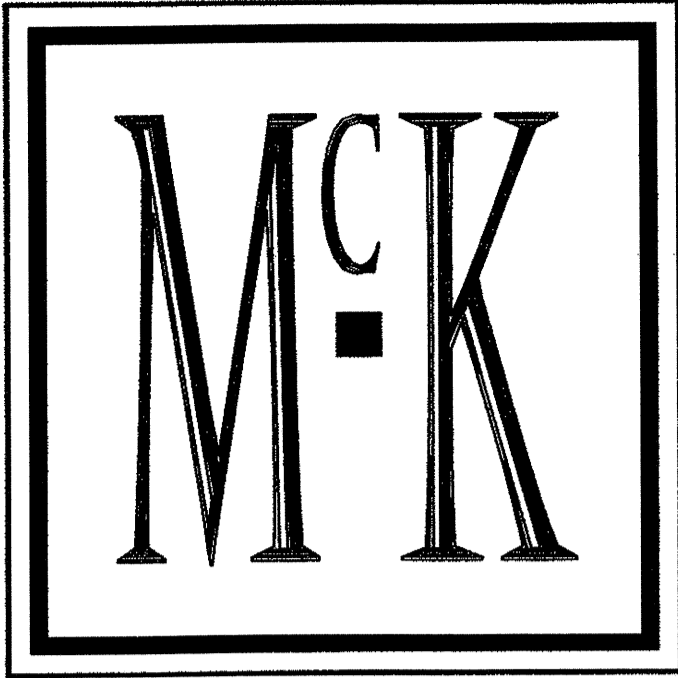
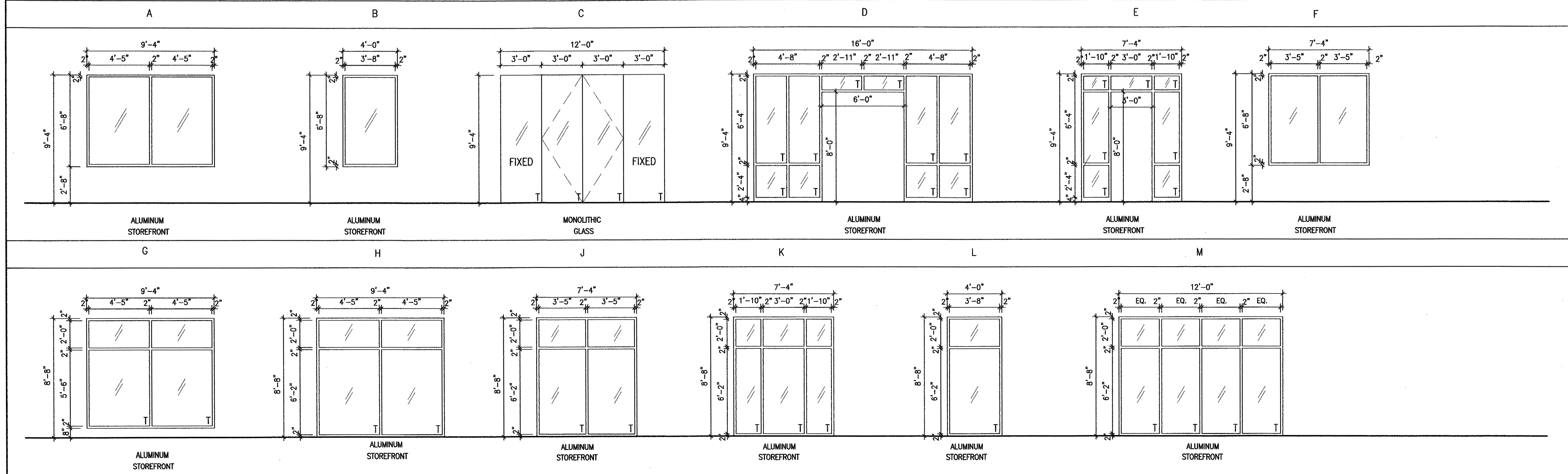
**NOTES**

1. PROVIDE TEMPORARY DOORS DURING INITIAL TENANT UPFITS
2. NO SETTING BED OR WALK OFF MAT THIS LOCATION
3. TEMPORARY DOOR AND FRAME MATERIAL TBD BY CONTRACTOR.
4. SEE WINDOW ELEVATIONS
5. PROVIDE HARDWARE ALLOWANCE - \$400 PER LEAF

**HARDWARE-SUBMIT FOR ARCHITECTS REVIEW AND APPROVAL**

- A. PANIC DEVICE WITH ELECTRIC STRIKE #310-1 AND CARD KEY LOCK
- B. PANIC DEVICE
- C. LOCKABLE LEVER HANDSET - COMMON
- D. LOCKABLE LEVER HANDSET - TENANT
- E. CLOSER

## WINDOW ELEVATIONS



**McKELLAR & ASSOCIATES**  
ARCHITECTS

Post Office Box 1076, Mt Pleasant, SC 29465  
Phone 843/884.9085 Fax 843/884.9058

NO REVISION DATE

**OFFICES AT BELLE HALL**

LONG POINT ROAD  
MT. PLEASANT, SC

DOOR AND WINDOW SCHEDULES AND ELEVATIONS

**A001**

DESIGNED	CLS/LC	SHEET	OF
DRAWN	DJ/LC	SCALE	1/4"=1'-0"
REVIEWED	AWJ	PROJECT NO	200648.10
CHECKED	AMM	DATE	1.6.06

**FOR CONSTRUCTION**

Drawing name: P:\2006 Projects\0648.10 - Belle Hall\0648.10.dwg, Rev: 06/26/06, 11:28AM